

Install Windows 7 32bit&64bit on Bear Ridge platform Guide

Document No.: MZBSWIP-GUI-001

Authors:

Brian, Lu

Approved By:

Storm Chen

TS Hwang

PROPRIETARY INFORMATION -- NOT FOR PUBLICATION

The information contained herein is the property of Gigabyte Technology Co., Ltd. and is supplied without liability for errors or omissions. No part may be reproduced or used except as authorized by contract or other written permission. The copyright and the foregoing restriction on reproduction and use extend to all media in which the information may be embodied.

© Copyright Gigabyte 2016

All Rights

Reserved

NCBU	Brian, Lu	Install Windows 7 32&64bit on Bear	Install Windows 7 32&64bit on
Issue 0.04	2016/05/27	Ridge platform Guide	Bear Ridge platform Guide
		GIGABYTE Software	v0.04Install Windows 7
			32bit64bit on Bear Ridge
			platform Guide v0 04 .docx

Contents

1.	General Information	3
1.1.	Issue Control	3
1.2.	Record of Changes	3
1.3.	References	3
1.4.	Acronyms	3
2.	User Guide	4
2.1.	Tools Required	4
2.2.	Insert hotfixes and drivers into Windows 7 64bit SP1 ISO image file	4

Figures

Tables

1. General Information

1.1. Issue Control

This document was edited with **Microsoft Word, Version 2010**. The graphic drawings are originally sketched in **Microsoft PowerPoint Version 2010**.

1.2. Record of Changes

Table 0-1. Record of Changes

Issue	Date	Authors	Reason for Changes
0.01	2016/05/06	Brian, Lu	First version.
0.02	2016/05/09	Brian, Lu	Modify installing step
0.03	2016/05/25	Brian, Lu	Add install Windows 7 32bit illustrate and change create Image method
0.04	2016/05/27	Brian, Lu	Add illustrate about installing win7 64bit method

1.3. References

NO	Document title

1.4. Acronyms

2. User Guide

2.1. Tools Required

- MZBSWIP board
- USB disk (suggest 4GB and above)
- Win7 ISO image file or Win7 DVD
- WindowsImageTools. Please contact FAE to get it or download from gigabyte website.
- Windows6.1-KB2732471-v2 64bit hotfix. Please contact FAE to get it.
- SD/eMMC driver. Please contact FAE to get it.

2.2. Insert hotfixes and drivers into Windows 7 32bit/64bitISO image file

1. Mount your Win7 ISO image on your DVD-ROM or insert your Win7 DVD into DVD-ROM.
2. Copy Windows6.1-KB2732471-v2 64bit hotfix to WindowsImageTools "Path: WindowsImageTool\HOTFIX\x64".
3. Open the GIGABYTE Windows USB Installation Tool. See Figure 1.
4. Choose your DVD source device location.
5. Choose your destination USB device location.
6. If your Win7 is 32bit, please just tick top of item "Add USB driver to an offline Windows® 7 image". See Figure 1. If your Win7 is 64bit, please tick all the items. See Figure 2.
7. Press the start icon to combine USB 3.0 driver and hot fix with Win7 to your destination USB Device. It will start to copy Win7 file and insert driver to USB.

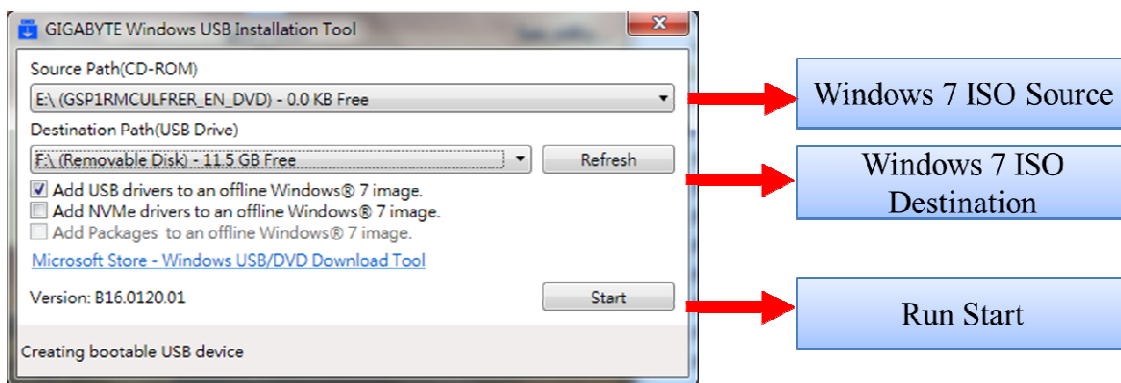
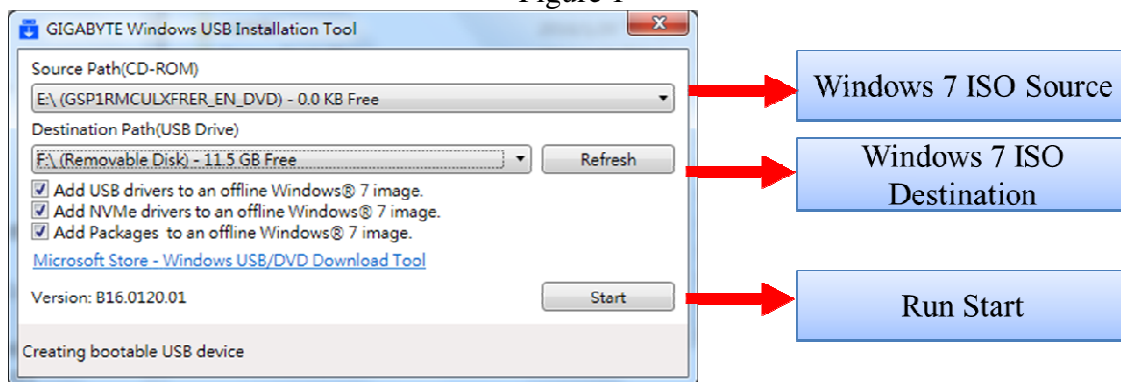


Figure 1



© Copyright Gigabyte 2016

All Rights

Reserved

NCBU Brian, Lu
Issue 0.04 2016/05/27

Install Windows 7 32&64bit on Bear
Ridge platform Guide
GIGABYTE Software

Install Windows 7 32&64bit on
Bear Ridge platform Guide
v0.04 Install Windows 7
32bit/64bit on Bear Ridge
platform Guide v0.04 .docx

Figure 2

8. After program is done, it will show complete message. See Figure 3

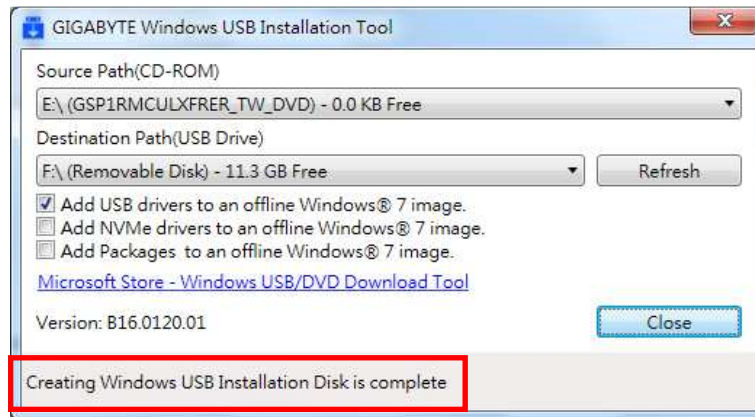


Figure 3

9. If you want to install Win7 into the eMMC. Please do as follows:
- According to your Win7 OS copy SD/eMMC 32bit driver or 64 bit driver into the installation USB device. Copy file as below.

iaiosd.inf,
iaiosd.sys
iaiosd.cat
wdfcoinstaller01011.dll

- Power on the devices and press "Delete" key on the keyboard into BIOS setup and setting as follow.

Choose "Advanced" → OS Selection → OS Selection
Select and set OS Selection to "Legacy 32bit System"
Save & Exit

Note: Win7 32bit, please select Legacy 32bit System. Win7 64bit, please select Legacy 32bit System first. After installing OS finish, change Legacy 32bit system to Legacy 64bit system and reboot twice. Reboot the device and press the "F12" key on the keyboard into the Boot select.

- Please select your installing Win7 USB and use **Legacy mode**. See Figure 4

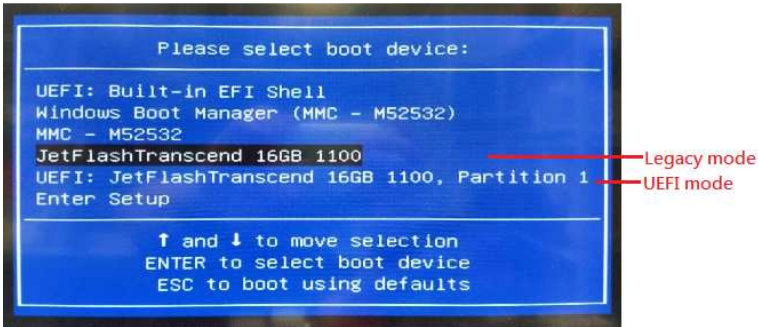
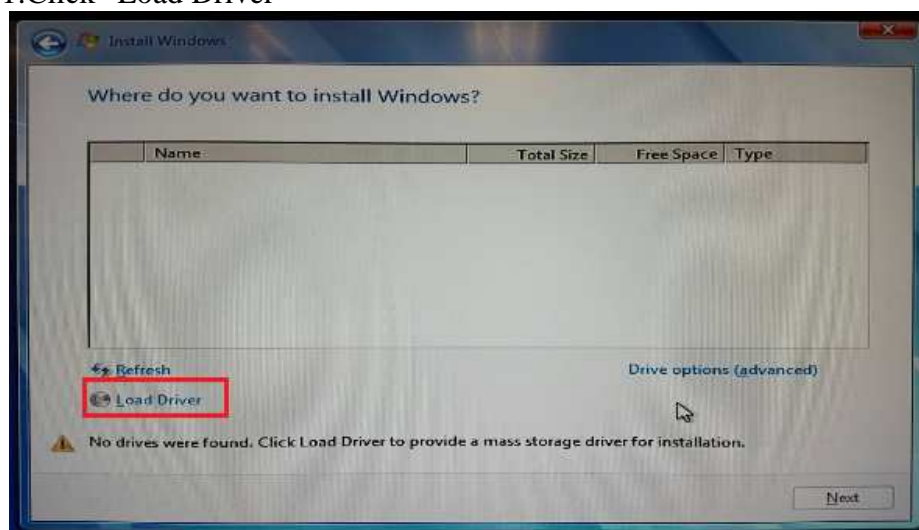


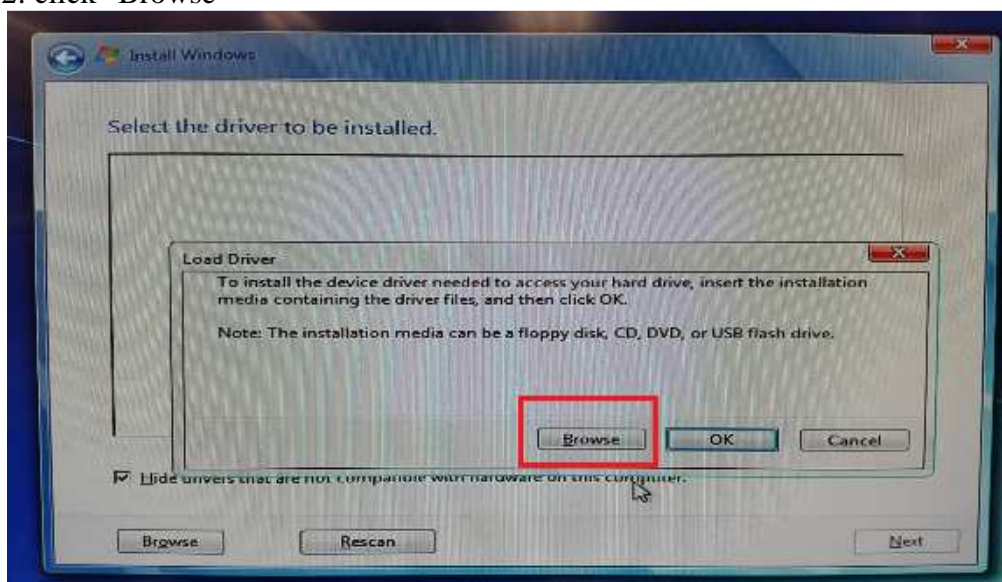
Figure 4

10. Start installing Win7 from USB. Please do as follows.

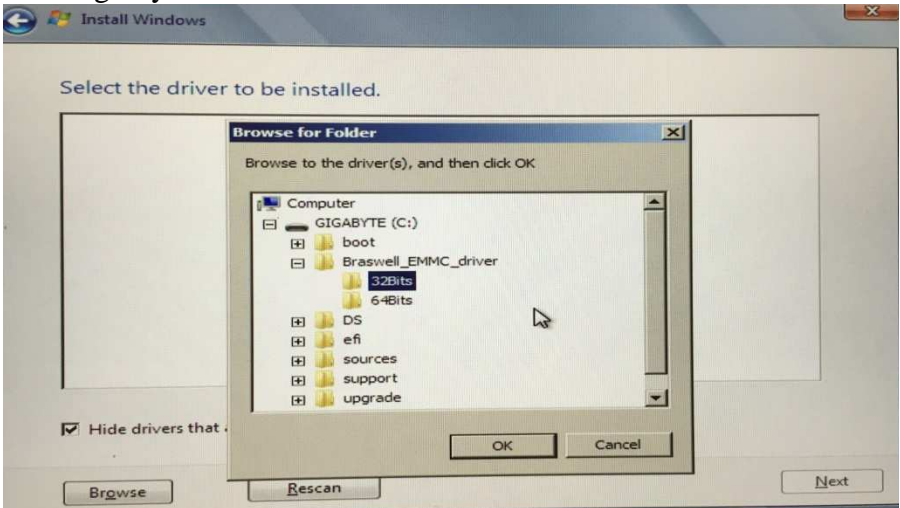
Step1: Click "Load Driver"



Step2: click "Browse"



Step3: According to your Win7 OS to install SD/eMMC 32bit driver or 64bit driver.



11. You can see the eMMCdevice(Disk 1 Unallocated Space) on install menu. See figure 5

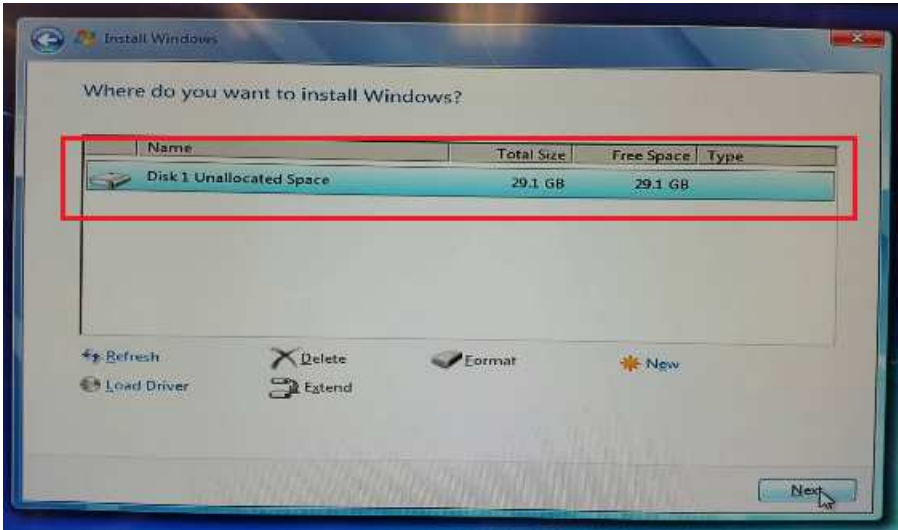


Figure 5

12. Now, you can install Win7 on the eMMC for the EL-20 device.