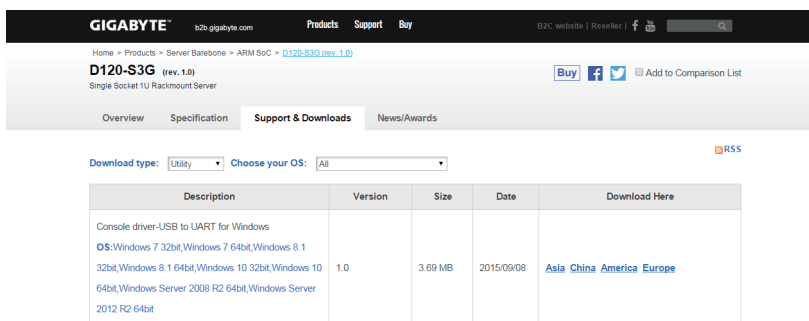


# Connecting via SSH to Your Server

1. Install the UART driver in the client system.
2. To download the UART driver, go to Gigabyte website: <http://b2b.gigabyte.com/>
3. Select product category.



4. Select **D120-S3G**.
5. Go to **Support & Downloads**. Select **Utility** from Download type and choose your OS. Save the file (**Download Console driver-USB to UART for Windows**) to a known location on your client system.



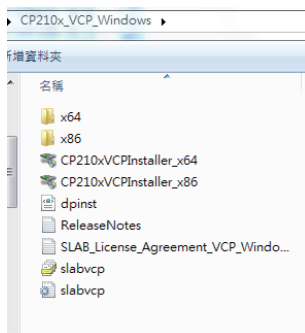
The screenshot shows the Gigabyte website interface for the D120-S3G server. The 'Support & Downloads' tab is active, and the 'Download type' is set to 'Utility' and 'Choose your OS' is set to 'All'. A table lists available downloads:

Description	Version	Size	Date	Download Here
Console driver-USB to UART for Windows OS: Windows 7 32bit, Windows 7 64bit, Windows 8.1 32bit, Windows 8.1 64bit, Windows 10 32bit, Windows 10 64bit, Windows Server 2008 R2 64bit, Windows Server 2012 R2 64bit	1.0	3.69 MB	2015/09/08	<a href="#">Asia</a> <a href="#">China</a> <a href="#">America</a> <a href="#">Europe</a>

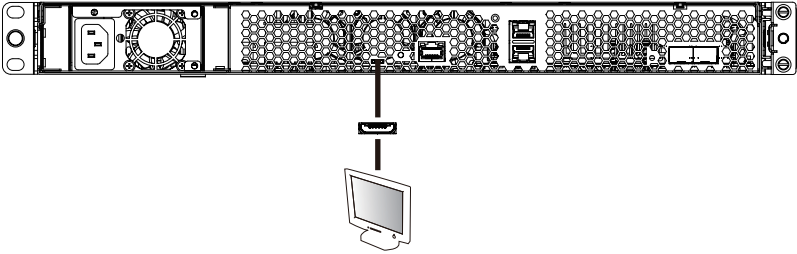


**NOTE!** Verify that the name of the file is **CP210x\_VCP\_Windows.zip**.

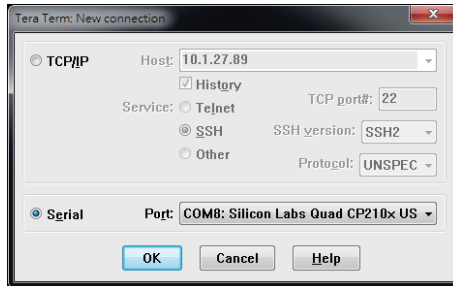
6. Unzip **CP210x\_VCP\_Windows.zip**.
7. 32 bits OS : Run **CP210x\_VCP\_Windows\CP210xVCPInstaller\_x86.exe**  
64 bits OS : Run **CP210x\_VCP\_Windows\CP210xVCPInstaller\_x64.exe**



8. Connect server and client by using a micro-USB cable.



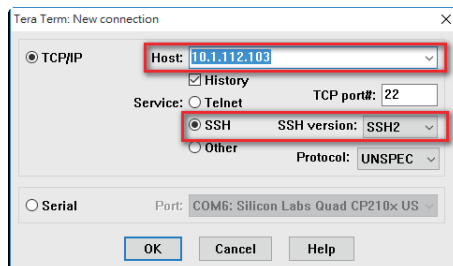
9. Press Power button to power on the server.  
10. Select the console tool you are familiar with to use for your client system.  
Run the console tool.  
11. Console prompts. Select Serial and Click **OK**.



12. Get your IP address in command prompt.

```
root@alpine:~# ifconfig
eth1
Link encap:Ethernet HWaddr 10:00:00:00:00:01
inet addr:10.1.112.103 Bcast:10.1.112.255 Mask:255.255.0
UP BROADCAST RUNNING MULTICAST MTU:1500 Metric:1
RX packets:42310 errors:0 dropped:0 overruns:0 frame:0
TX packets:159 errors:0 dropped:0 overruns:0 carrier:0
collisions:0 txqueuelen:1000
RX bytes:2520669 (2.5 MB) TX bytes:17877 (17.8 KB)
```

13. Rerun the console tool and console prompts.  
14. Enter the IP address in the **Host** parameter, select **SSH** and click **OK**.



15. Enter **Username** and **Password**.

**Username:** root

**Password:** 123456

16. Click OK and enter the OS.

