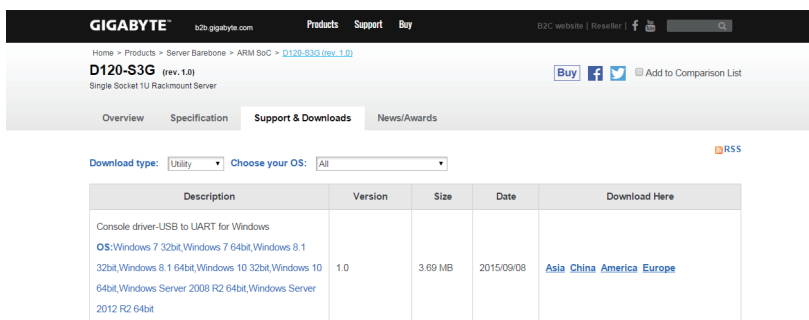


Configure the BMC to Gather IP address

1. Install the UART driver in the client system.
2. To download the UART driver, go to Gigabyte website: <http://b2b.gigabyte.com/>
3. Select product category.
4. Select **D120-S3G**.



5. Go to **Support & Downloads**. Select **Utility** from Download type and choose your OS. Save the file (**Download Console driver-USB to UART for Windows**) to a known location on your client system.
6. Unzip **CP210x_VCP_Windows.zip**.

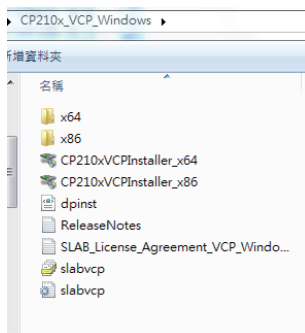


Description	Version	Size	Date	Download Here
Console driver-USB to UART for Windows OS: Windows 7 32bit, Windows 7 64bit, Windows 8.1 32bit, Windows 8.1 64bit, Windows 10 32bit, Windows 10 64bit, Windows Server 2008 R2 64bit, Windows Server 2012 R2 64bit	1.0	3.69 MB	2015/09/08	Asia China America Europe

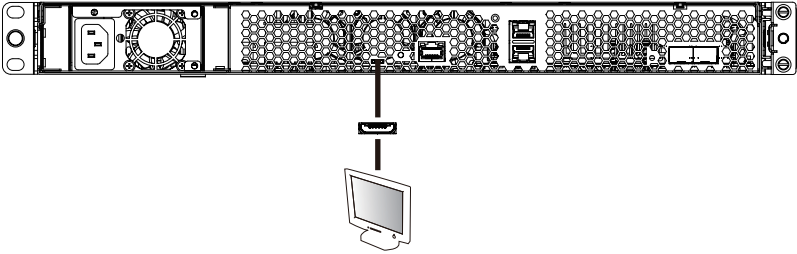


NOTE! Verify that the name of the file is **CP210x_VCP_Windows.zip**.

7. 32 bits OS: Run CP210x_VCP_Windows\CP210xVCPInstaller_x86.exe
64 bits OS : Run CP210x_VCP_Windows\CP210xVCPInstaller_x64.exe
8. Connect server and client by using a micro-USB cable.

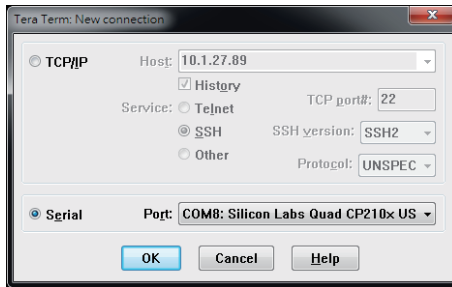


9. Press Power button to power on the server.

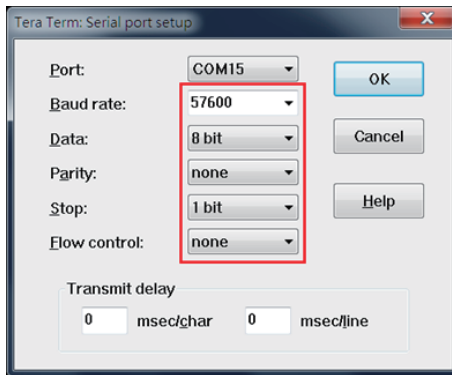


10. Select the console tool you are familiar with to use for your client system.
Run the console tool.

11. Console prompts. Select Serial and Click **OK**.

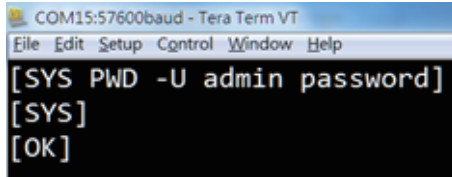


12. Configure the serial console settings.



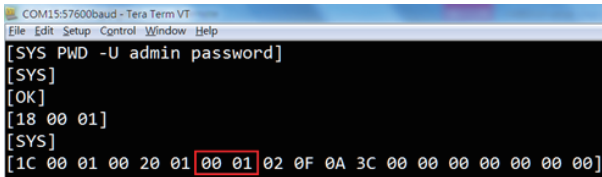
- 13. Rerun the console tool and cosole prompts.
- 14. Enter the following command to login the system:

[SYS PWD -U admin password]



- 15. Enter the following command to check the BMC firmware version:

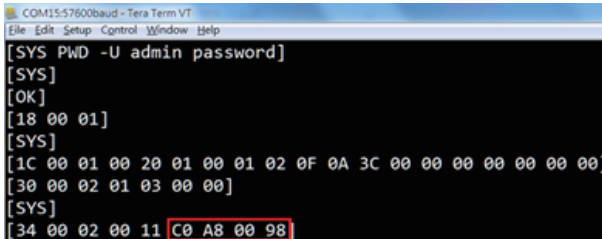
[18 00 01]



- 16. Enter the following command to get the BMC IP address in command prompt.

[30 00 02 01 03 00 00]

The IP address is represented in hexadecimal numbers.
Convert hexadecimal to decimal, the IP address is: 192.168.0.152



- 17. Enter the following command to logout the system.

[SYS PWD -X]

