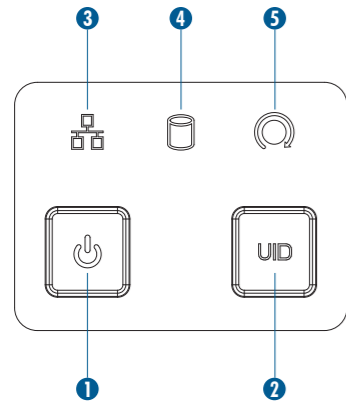
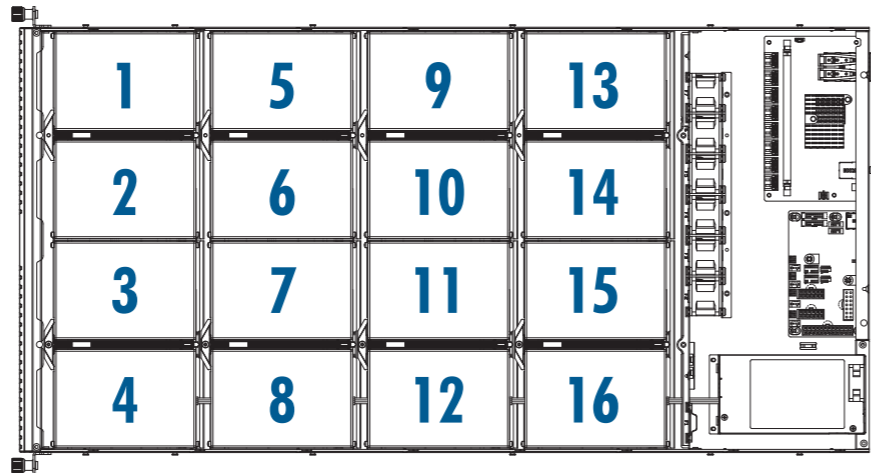


### Front Of The System

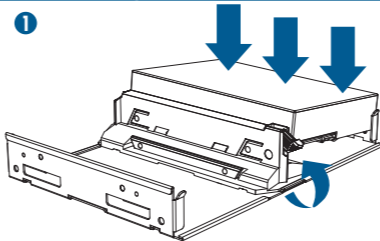


- ❶ Power Button/LED
- ❷ UID Switch/LED
- ❸ LAN Status LED
- ❹ HDD Activity LED
- ❺ Reset Button

### HDD Location

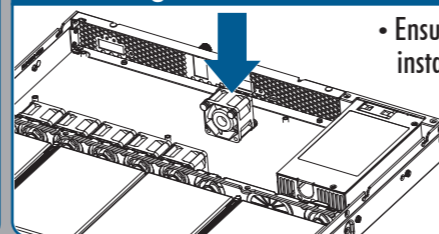


### Installing 3.5" HDD



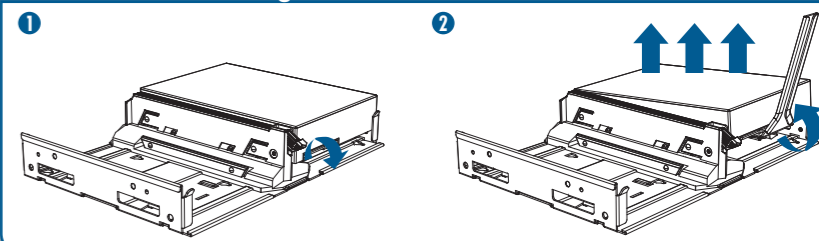
- Sloping the HDD to engage with two bumps on metal side
- Press Down another side and ensure HDD align two bumps of plastic part
- Lock up the latch

### Installing Fan Module



- Ensure the rubber guide pin installed with the fan correctly
- Directly snap in rubber guide pin on to the notch of fan bar

### Removing 3.5" HDD



**CAUTION**



**TWO PERSON  
LIFT  
REQUIRED**



**CAUTION : Slide/rail mounted  
equipment is not be used as a  
shelf or a work space.**