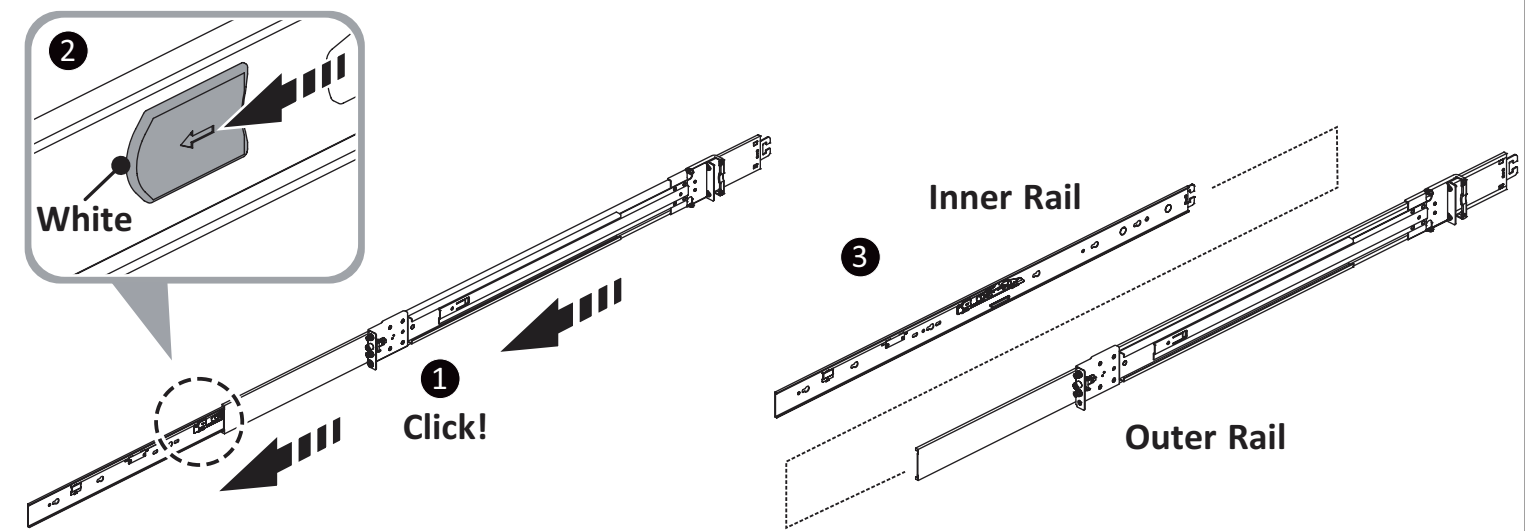
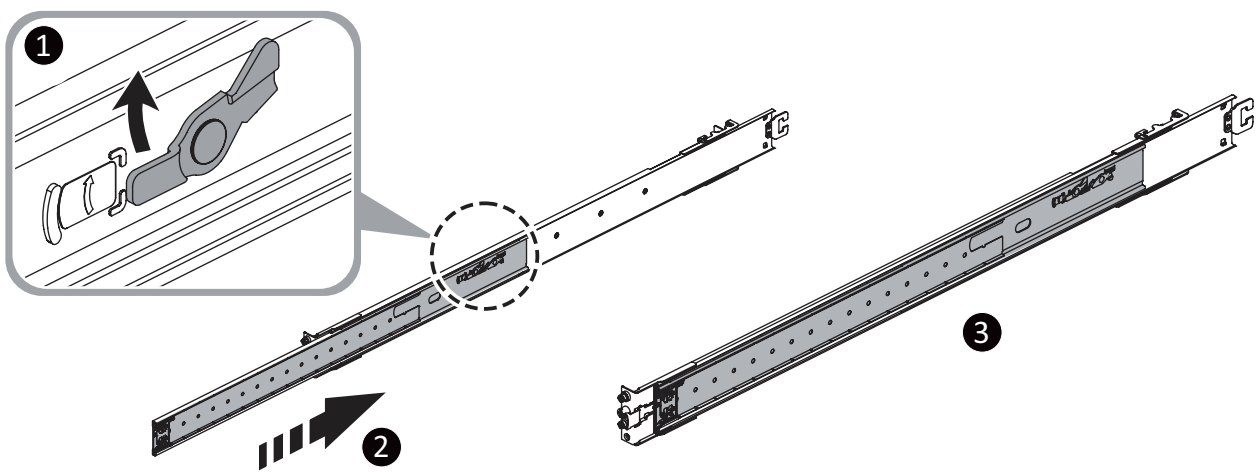


Rail Kit Quick Installation Guide

A) Remove the Inner Rail

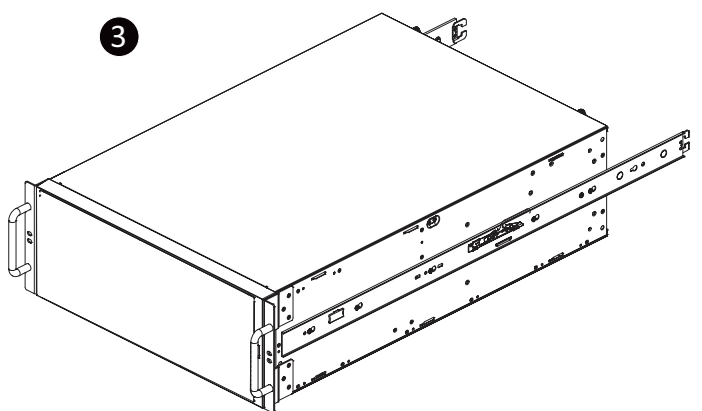
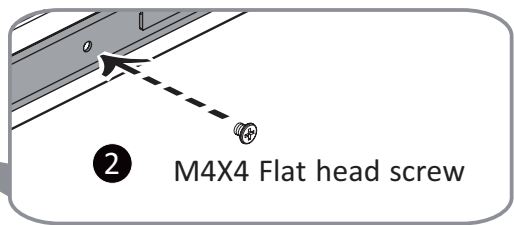
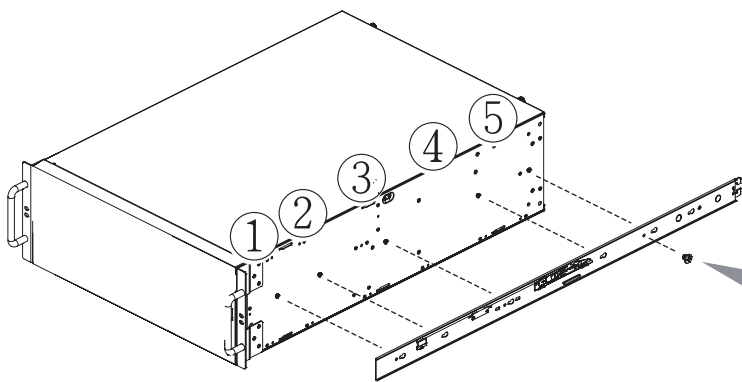


B) Push and Slide Middle Rail back

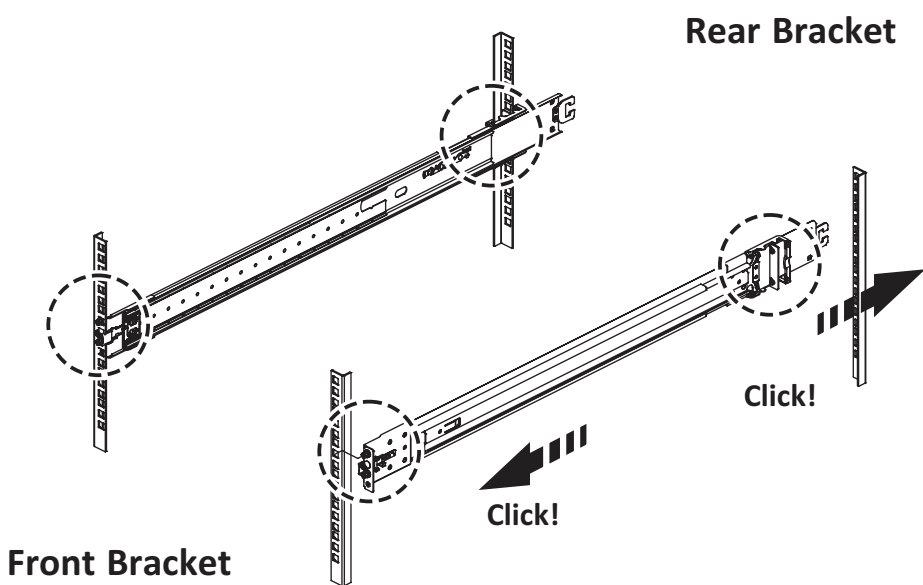


C) Install the Inner Rail (optional supporting bracket) onto the chassis

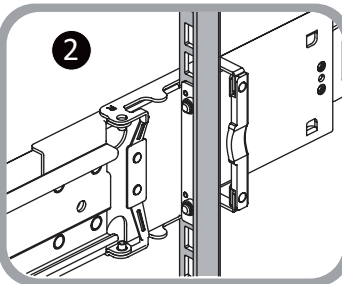
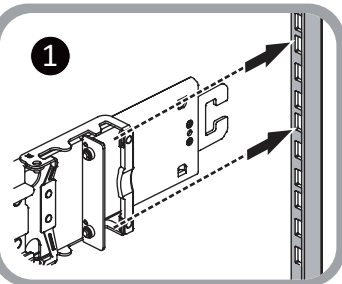
1 Key Hole ①-⑤



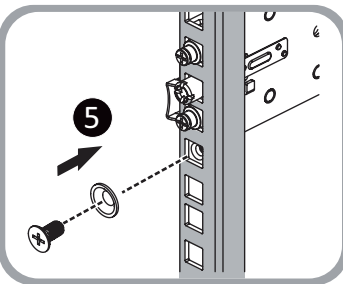
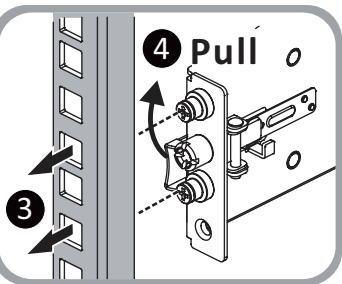
D) Fix the Outer Rail/Bracket assembly to the frame



Rear Bracket

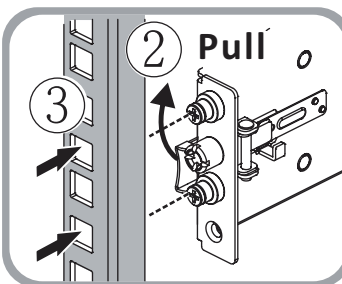
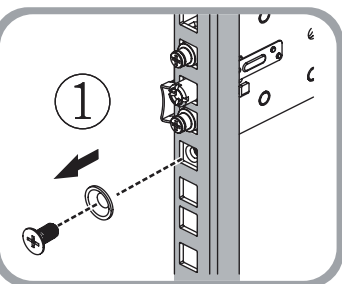


Front Bracket

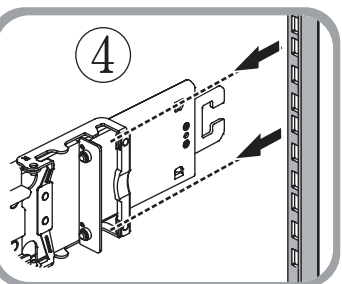


M5x10+Washer

Detach Front Bracket From Rack Post

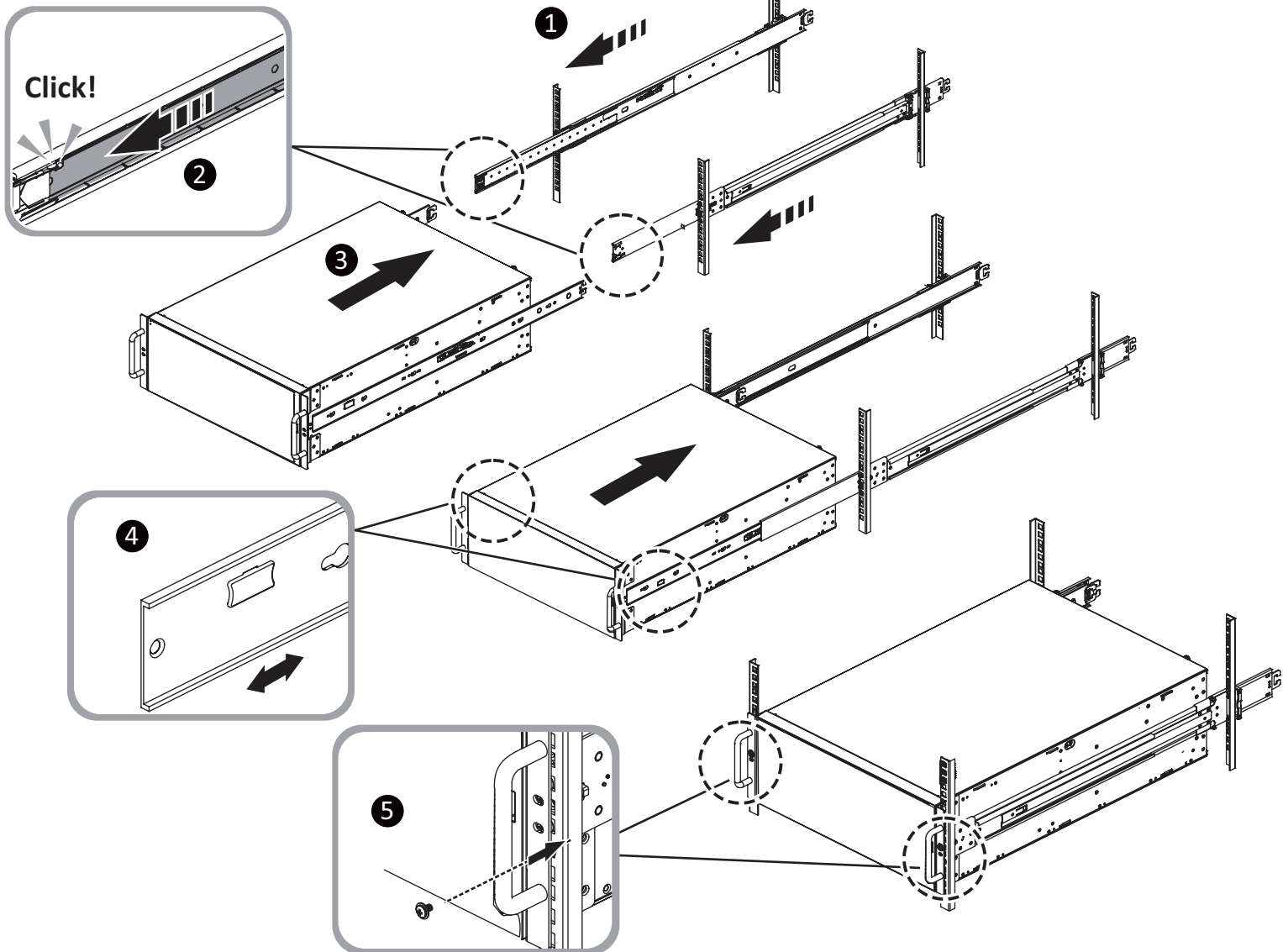


Detach Rear Bracket From Rack Post



E) Insert the Chassis

1. Pull the middle rail fully extended in lock position.
2. Ensure ball bearing retainer is located at the front of the middle rail.
3. Insert the chassis into middle-outer rails.
4. When hit a stop, please pull/push the blue release tab on the inner rails.
5. Push the chassis back to the rack and fasten M5x9 screw to chassis ear.



Remove the chassis from rack

