

# GIGABYTE™

## Assembly Notice

Model Name: **G481-HA0-00**

GBT P/N: **6NG481HA0MR-00-\***

Release Date: **2018/07/02**

NOTICE: This document has released under

A Non-Disclosure Agreement to:

CUSTOMER: \_\_\_\_\_

PROJECT: **G481-HA0**

This Document has been released from:

Company: GIGABYTE TECHNOLOGY CO., LTD

Approved By: \_\_\_\_\_

Checked By: \_\_\_\_\_

Released By: \_\_\_\_\_

Ref.No/ Rev:

1.0

Issued Date: 2018-07/02  
Revised Date:

Document Ref. Number:

Revision: 0.1

Pages:  
2/21

<b>1</b>	<b>Overview .....</b>	<b>3</b>
1.1	Document History .....	3
1.2	Purpose.....	3
1.3	Screw Torque Table .....	4
<b>2</b>	<b>Procedure for System assembly .....</b>	<b>5</b>
2.1	Step 1 .....	5
2.2	Step 2 .....	6
2.3	Step 3 .....	7
2.4	Step 4 1st GPGPU assembly .....	8
2.5	Step 5 2 <sup>nd</sup> to 8 <sup>th</sup> GPGPU assembly.....	10
2.6	Step 6 9 <sup>th</sup> GPGPU assembly .....	12
2.7	Step 7 .....	13
2.8	Step 8 .....	13
2.9	Step 9 .....	14
2.10	Step 10 .....	15
2.11	Step 11 10 <sup>th</sup> GPGPUassembly .....	16
2.12	Step 12 .....	17
2.13	Step 13 .....	17
2.14	Step 14 .....	18
2.15	Step 15 .....	19
2.16	Step 16 .....	20
2.17	Step 17 .....	21

Issued Date: 2018-07/02  
Revised Date:

Document Ref. Number:

Revision: 0.1

Pages:  
3/21

## 1 Overview

### 1.1 Document History

Item	Revision	Description	Date	Originator
1	0.1	1 <sup>st</sup> release	2018-07-02	張建誠

### 1.2 Purpose

This document defines the particular Gigabyte requirements for standard server assembly at DVT stage. The purpose is to ensure the method of assembly be transfer to the factory.



Issued Date: 2018-07/02  
Revised Date:

Document Ref. Number:

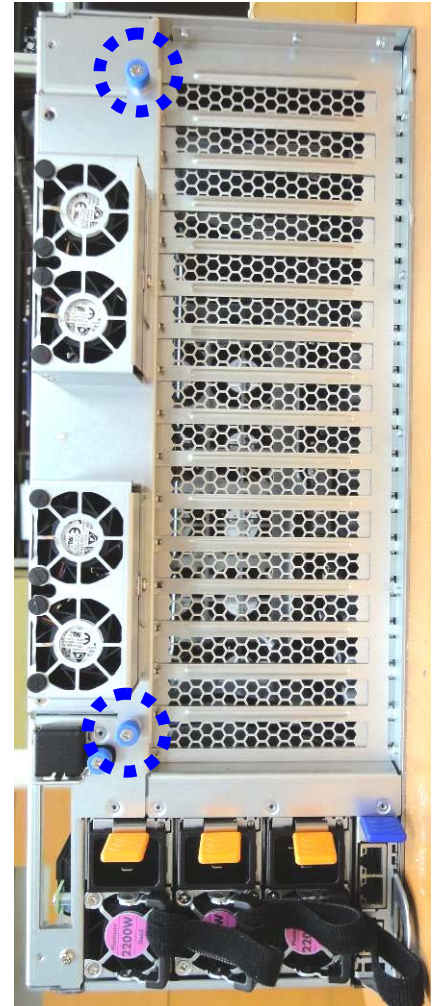
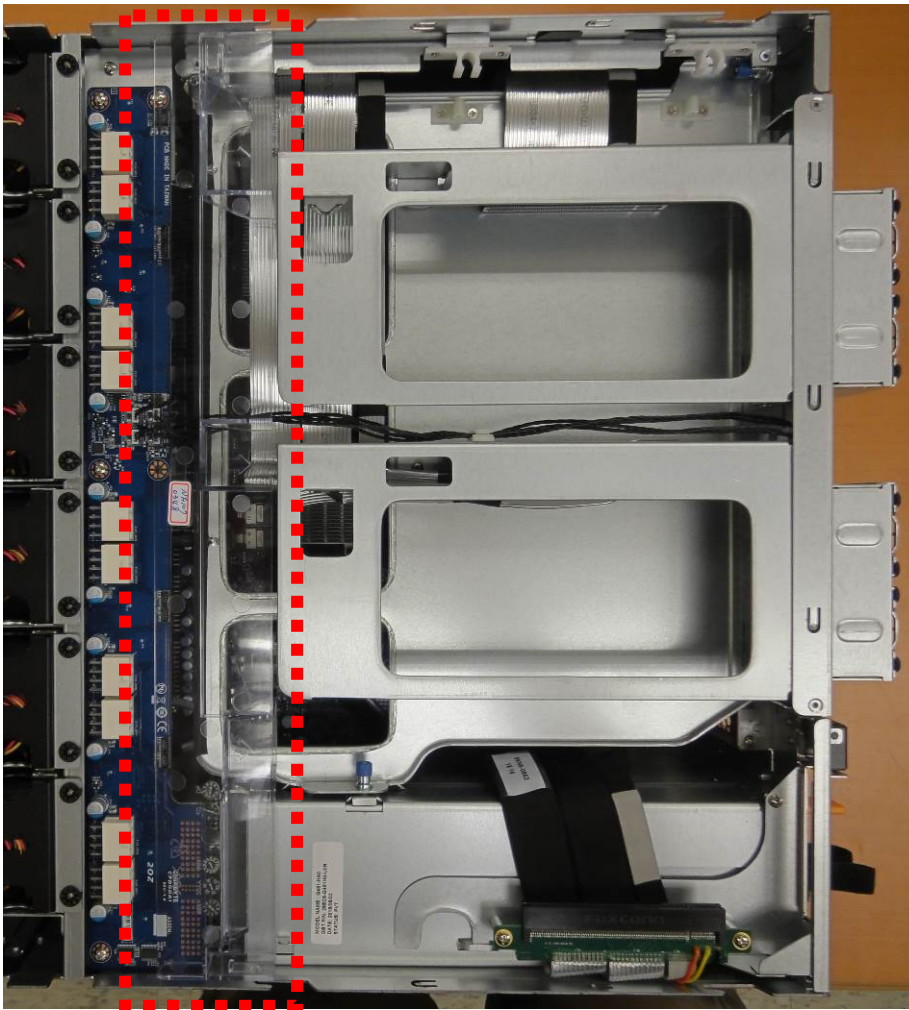
Revision: 0.1

Pages:  
5/21

### 2 Procedure for System assembly

Step	Method	Part number / Board model name	Q'ty	Comment
1	Remove top cover and take off fan duct, loosen the 40 FAN BKT thumb screw and remove the 40 fan kit.			

#### 2.1 Step 1



Issued Date: 2018-07/02  
Revised Date:

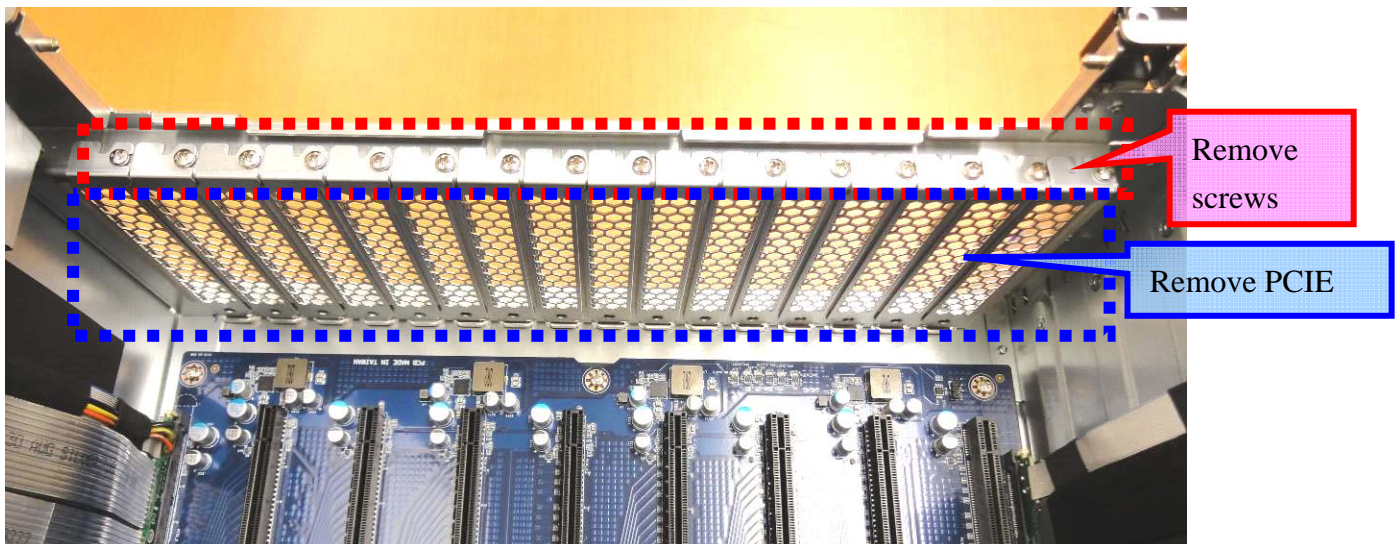
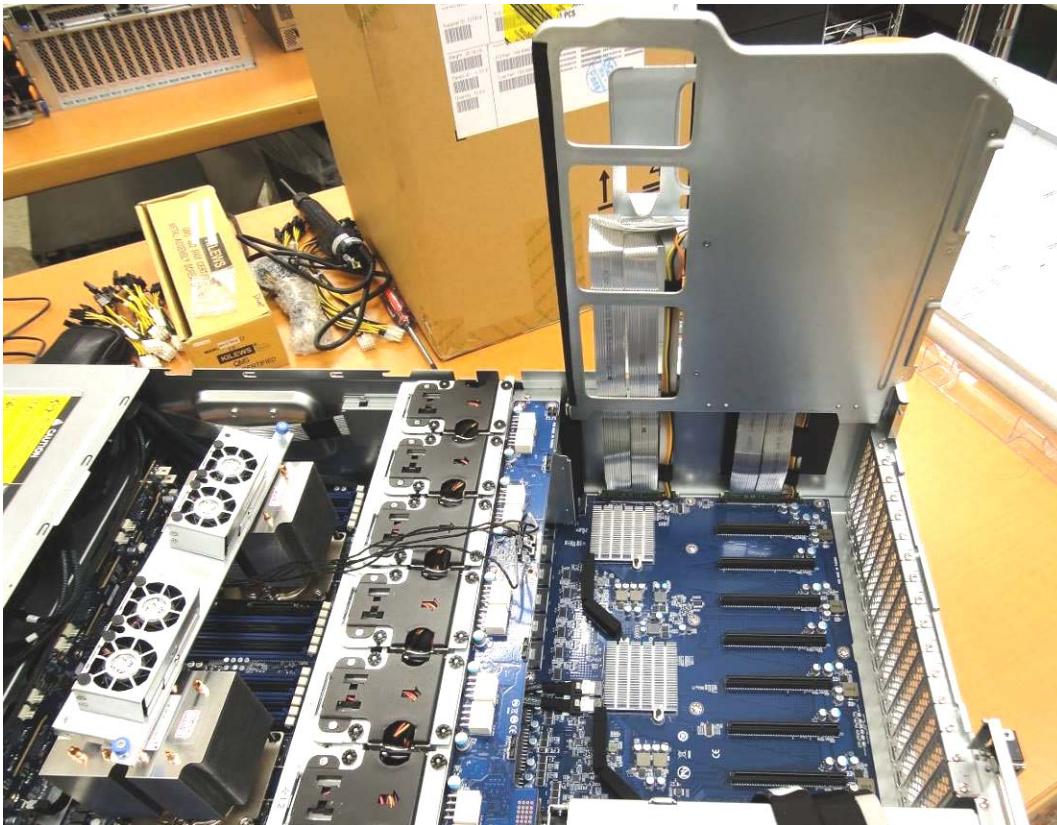
Document Ref. Number:

Revision: 0.1

Pages:  
6/21

Step	Method	Part number / Board model name	Q'ty	Comment
2	Remove the 40 fan kit and open the GPU tray. Loosen the PCIE BKT screws and take out the PCIE BKE.			<b>please keep the screws on hand please keep the screws on hand</b>

### 2.2 Step 2



Issued Date: 2018-07/02  
Revised Date:

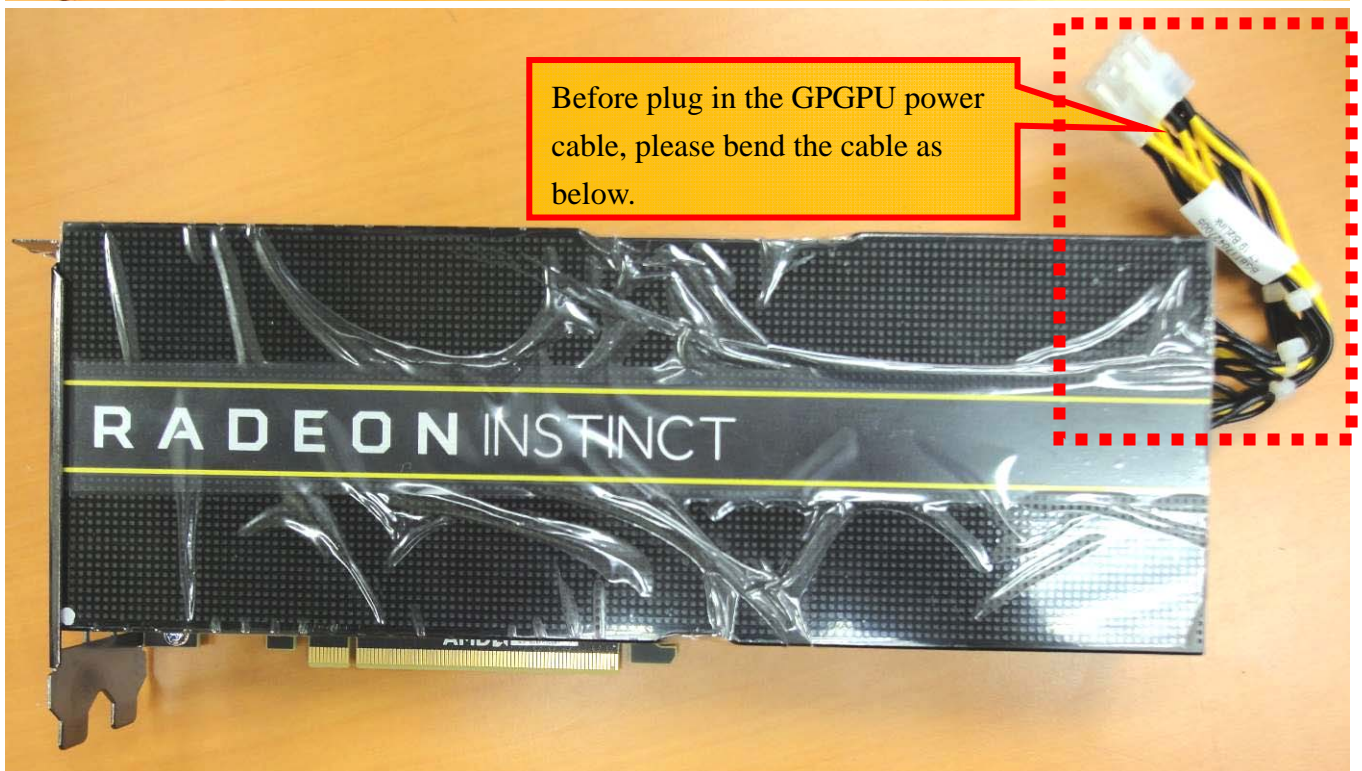
Document Ref. Number:

Revision: 0.1

Pages:  
7/21

Step	Method	Part number / Board model name	Q'ty	Comment
3	Plug in short GPU Power cable with GPGPU	25CRI-100002-B0R	8	<b>Total needs to assembly 8 units</b>

### 2.3 Step 3



Issued Date: 2018-07/02  
Revised Date:

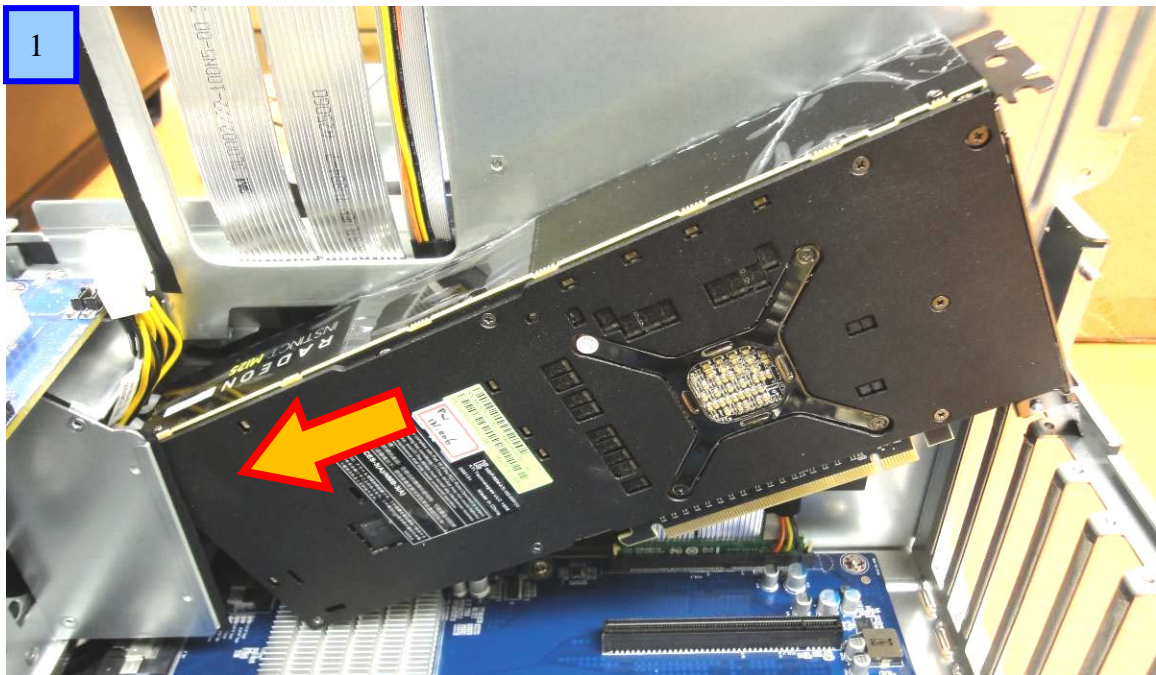
Document Ref. Number:

Revision: 0.1

Pages:  
8/21

Step	Method	Part number / Board model name	Q'ty	Comment
4	4.1 Please follow the arrowhead to insert the GPGPU into GPU fan duct then 4.2 lock it on PCIE/B and fasten it with 2* M3x5L, then 4.3 power cable assembly on GPU Power /B.			

### 2.4 Step 4 – 1st GPGPU assembly





Issued Date: 2018-07/02  
Revised Date:

Document Ref. Number:

Revision: 0.1

Pages:  
9/21

3



Issued Date: 2018-07/02  
Revised Date:

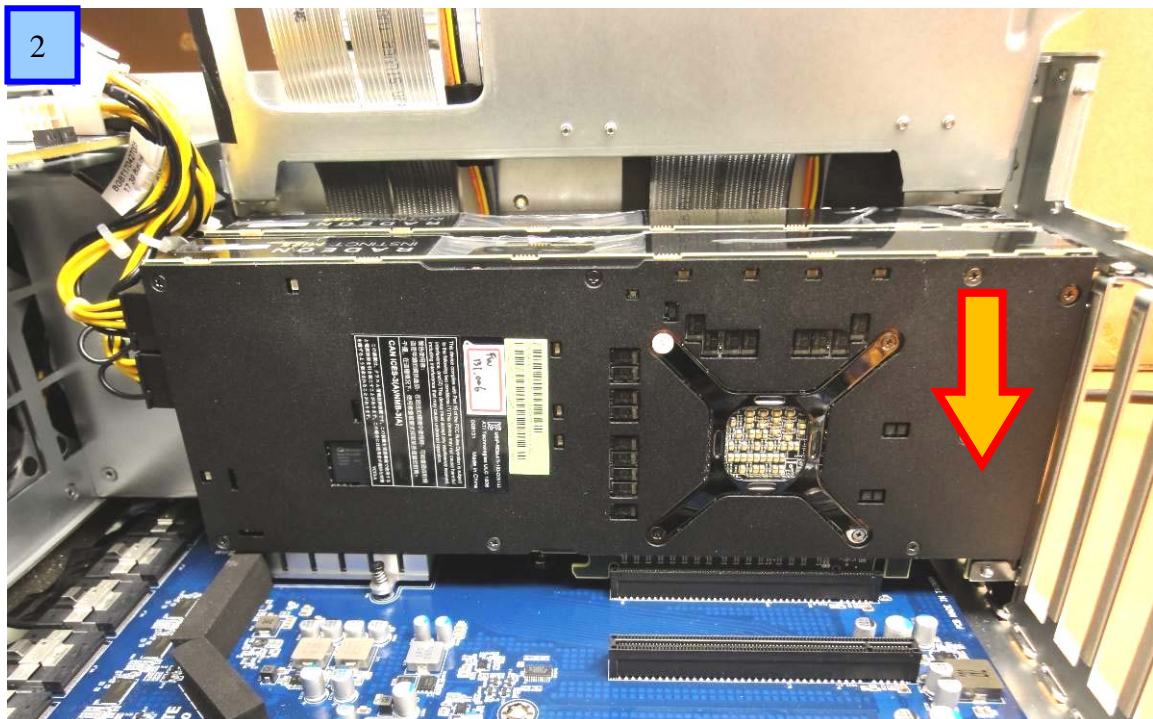
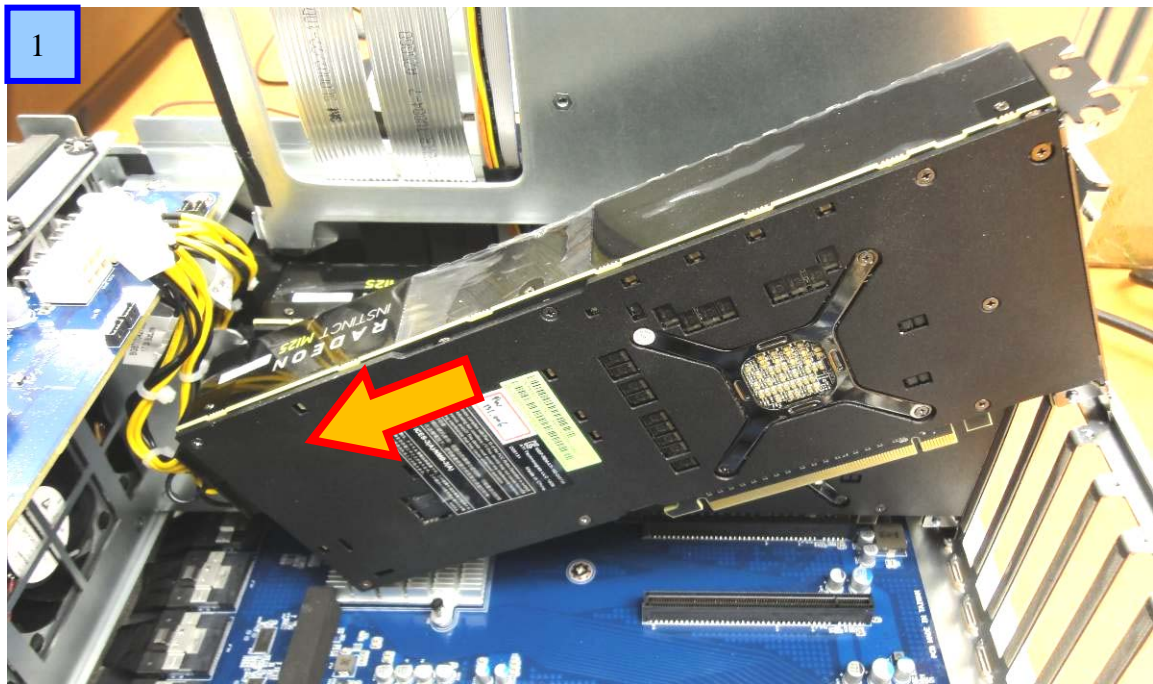
Document Ref. Number:

Revision: 0.1

Pages:  
10/21

Step	Method	Part number / Board model name	Q'ty	Comment
5	5.1 Please follow the arrowhead to insert the GPGPU into GPU fan duct then 5.2 lock it on PCIE/B and fasten it with 2* M3x5L, then 5.3 power cable assembly on GPU Power /B.			

### 2.5 Step 5 – 2nd to 8th GPGPU assembly



Issued Date: 2018-07/02  
Revised Date:

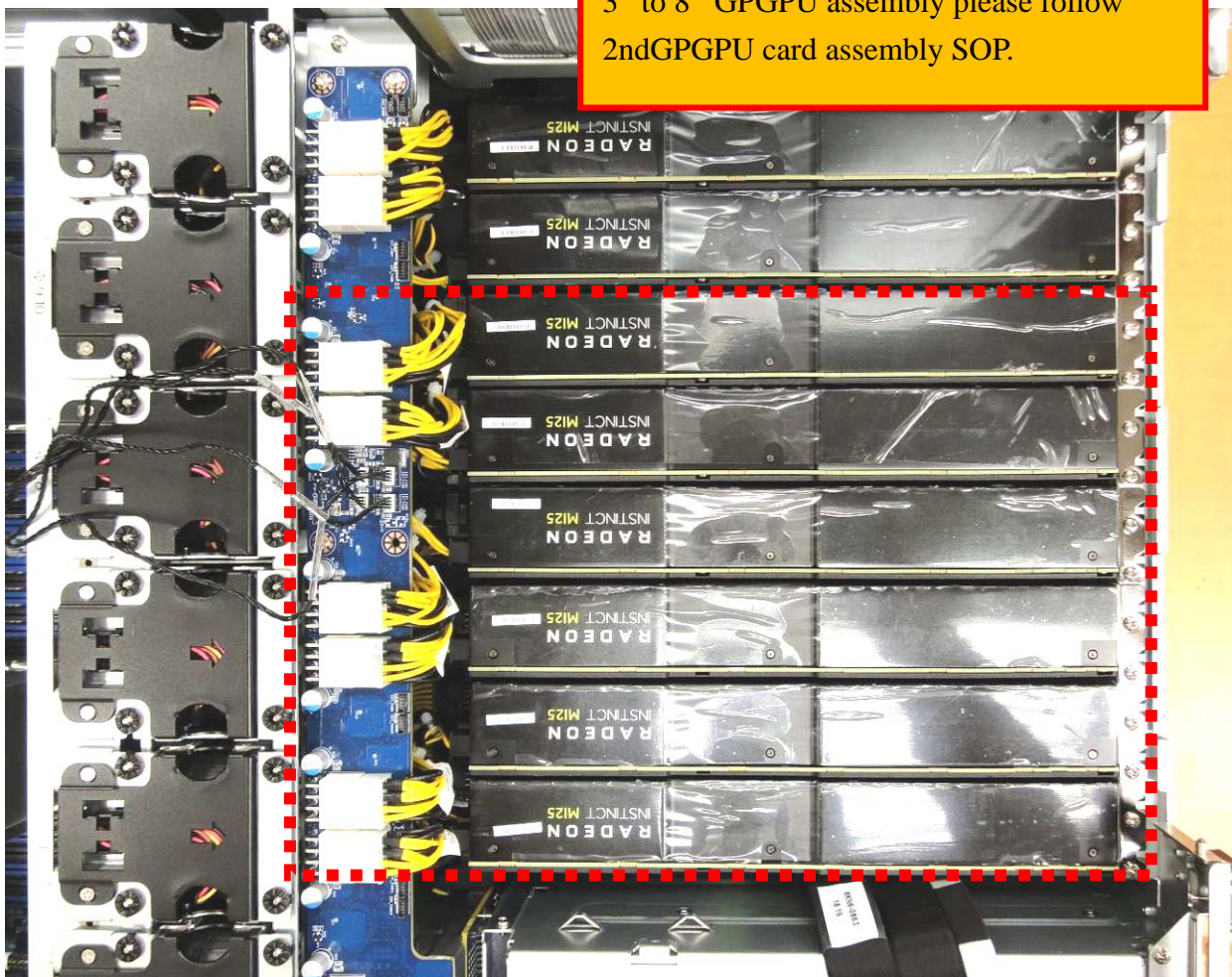
Document Ref. Number:

Revision: 0.1

Pages:  
11/21



3<sup>rd</sup> to 8<sup>th</sup> GPGPU assembly please follow  
2ndGPGPU card assembly SOP.



Issued Date: 2018-07/02  
Revised Date:

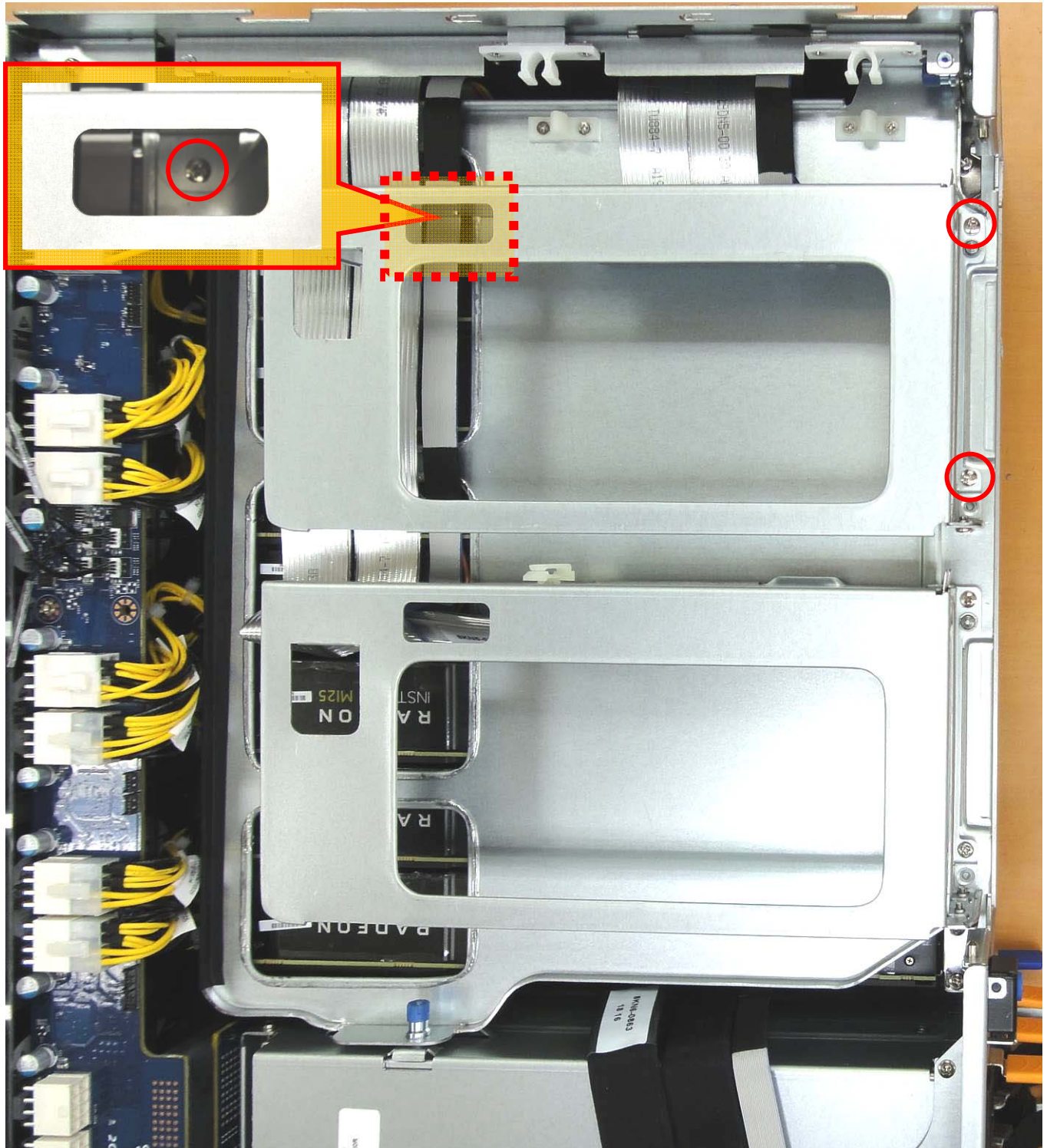
Document Ref. Number:

Revision: 0.1

Pages:  
12/21

Step	Method	Part number / Board model name	Q'ty	Comment
6	Put back the GPGPU Tray and take off the M3x5L screws on the tray top.			<b>please keep the screws on hand</b>

### 2.6 Step 6 – 9th GPGPU assembly



Issued Date: 2018-07/02  
Revised Date:

Document Ref. Number:

Revision: 0.1

Pages:  
13/21

Step	Method	Part number / Board model name	Q'ty	Comment
7	Take off the screws from GPU BKT and takeoff the PCIE BKT			<b>please keep the screws on hand</b>
8	Plug in the long GPU Power cable with GPGPU	25CRI-300002-B0R	1	

### 2.7 Step 7



### 2.8 Step 8



Issued Date: 2018-07/02  
Revised Date:

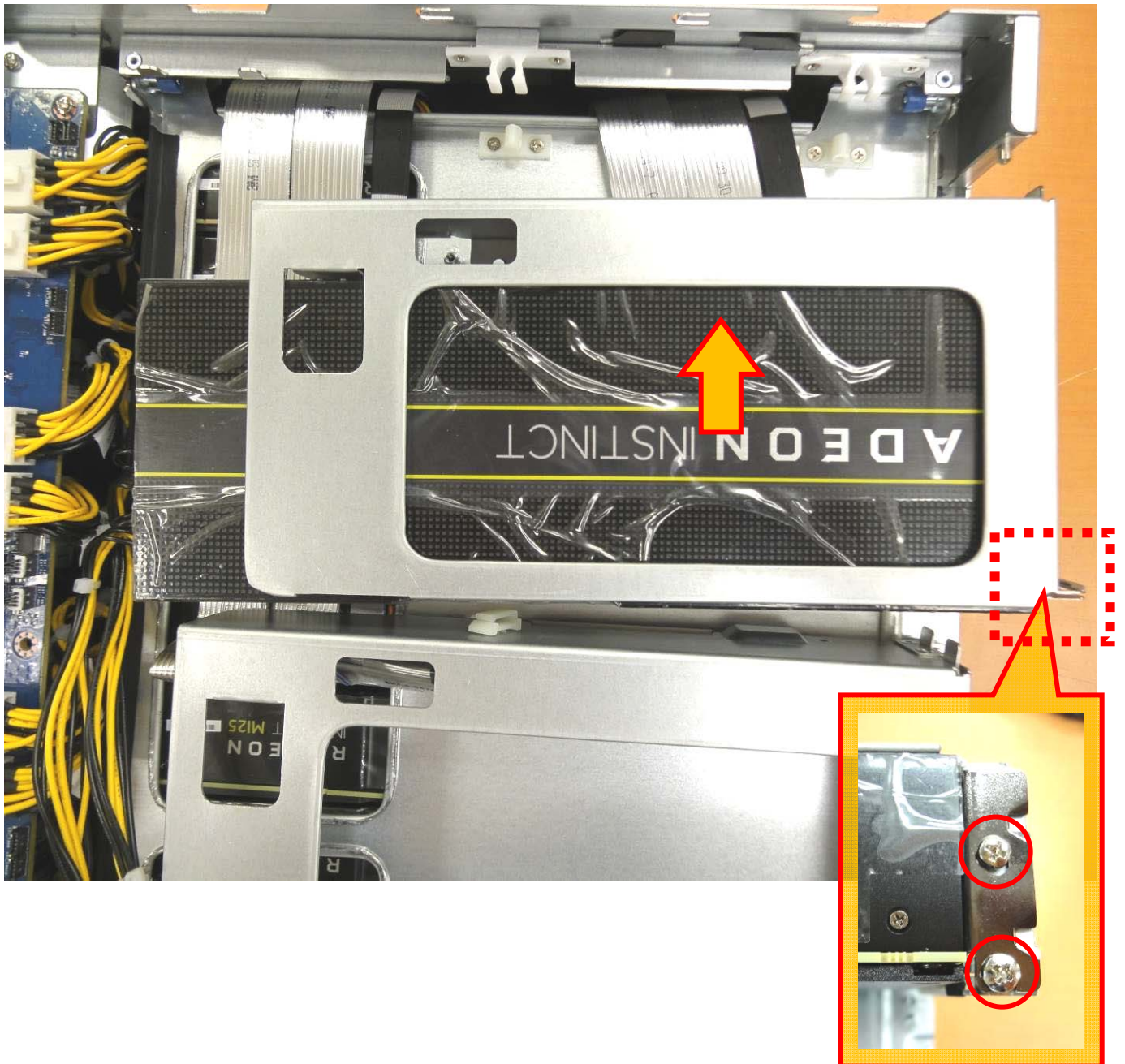
Document Ref. Number:

Revision: 0.1

Pages:  
14/21

Step	Method	Part number / Board model name	Q'ty	Comment
9	Please follow the arrowhead to insert the GPGPU into GPU BKT and fasten 2 x pcs M3x5L screws			

### 2.9 Step 9



Issued Date: 2018-07/02  
Revised Date:

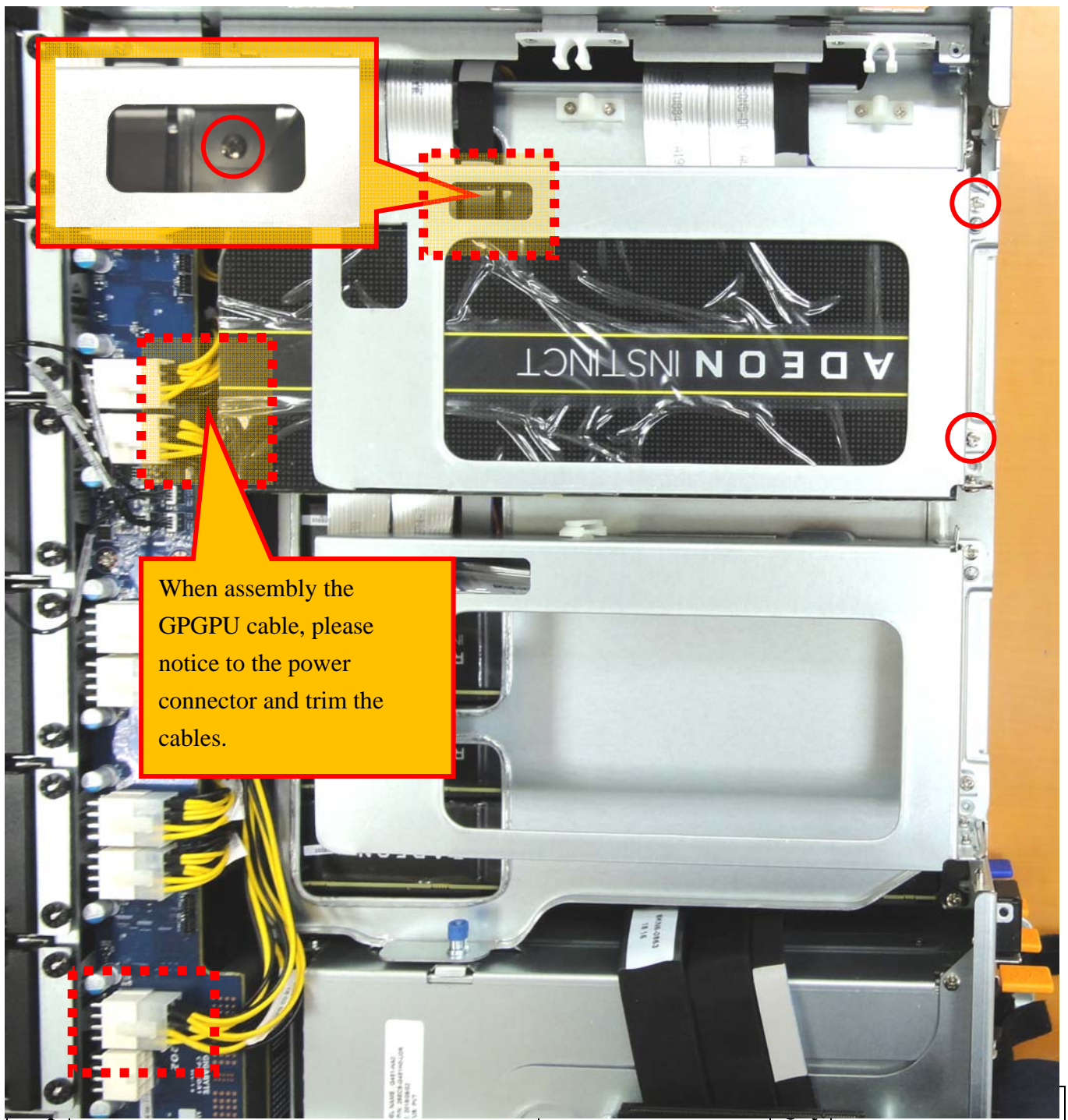
Document Ref. Number:

Revision: 0.1

Pages:  
15/21

Step	Method	Part number / Board model name	Q'ty	Comment
10	When done the GPU to assembly it with BKT, put it on tray and fasten it with 3pc M3 x 5L screws. Put power cable with GPU Power/ B and trim the cable.			

### 2.10 Step 10



Issued Date: 2018-07/02  
Revised Date:

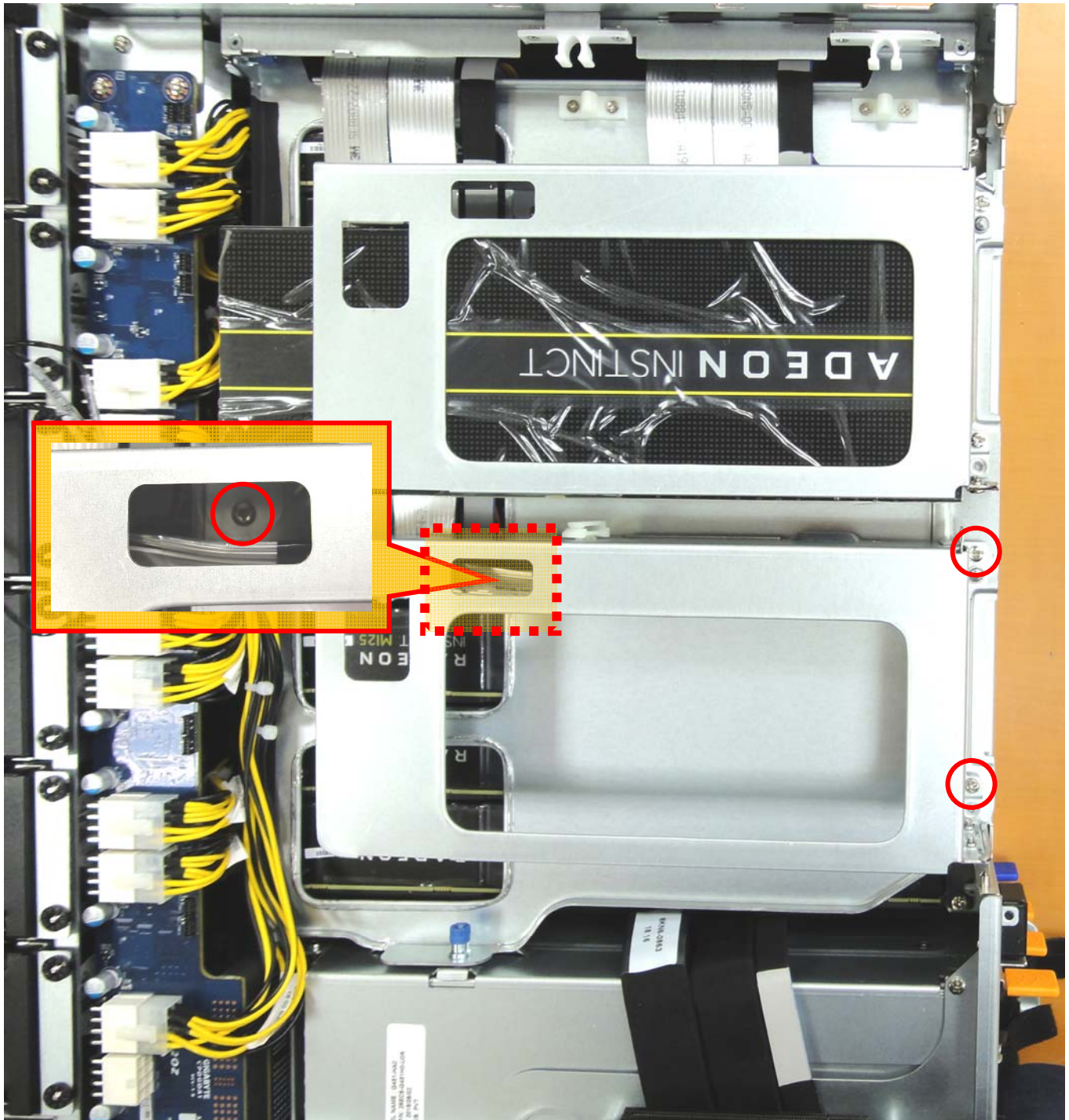
Document Ref. Number:

Revision: 0.1

Pages:  
16/21

		Board model name	
11	Take of the M3x5L screws from GPU BKT tray		<b>please keep the screws on hand</b>

### 2.11 Step 11- 10th GPGPU assembly





Issued Date: 2018-07/02  
Revised Date:

Document Ref. Number:

Revision: 0.1

Pages:  
17/21

Step	Method	Part number / Board model name	Q'ty	Comment
12	Take off the GPU BKT screws and take off the PCIE BKT.			<b>please keep the screws on hand</b>
13	Plug in the long GPU Power cable and assembly it with GPGPU	25CRI-300002-B0R	1	

### 2.12 Step 12



### 2.13 Step 13



Issued Date: 2018-07/02  
Revised Date:

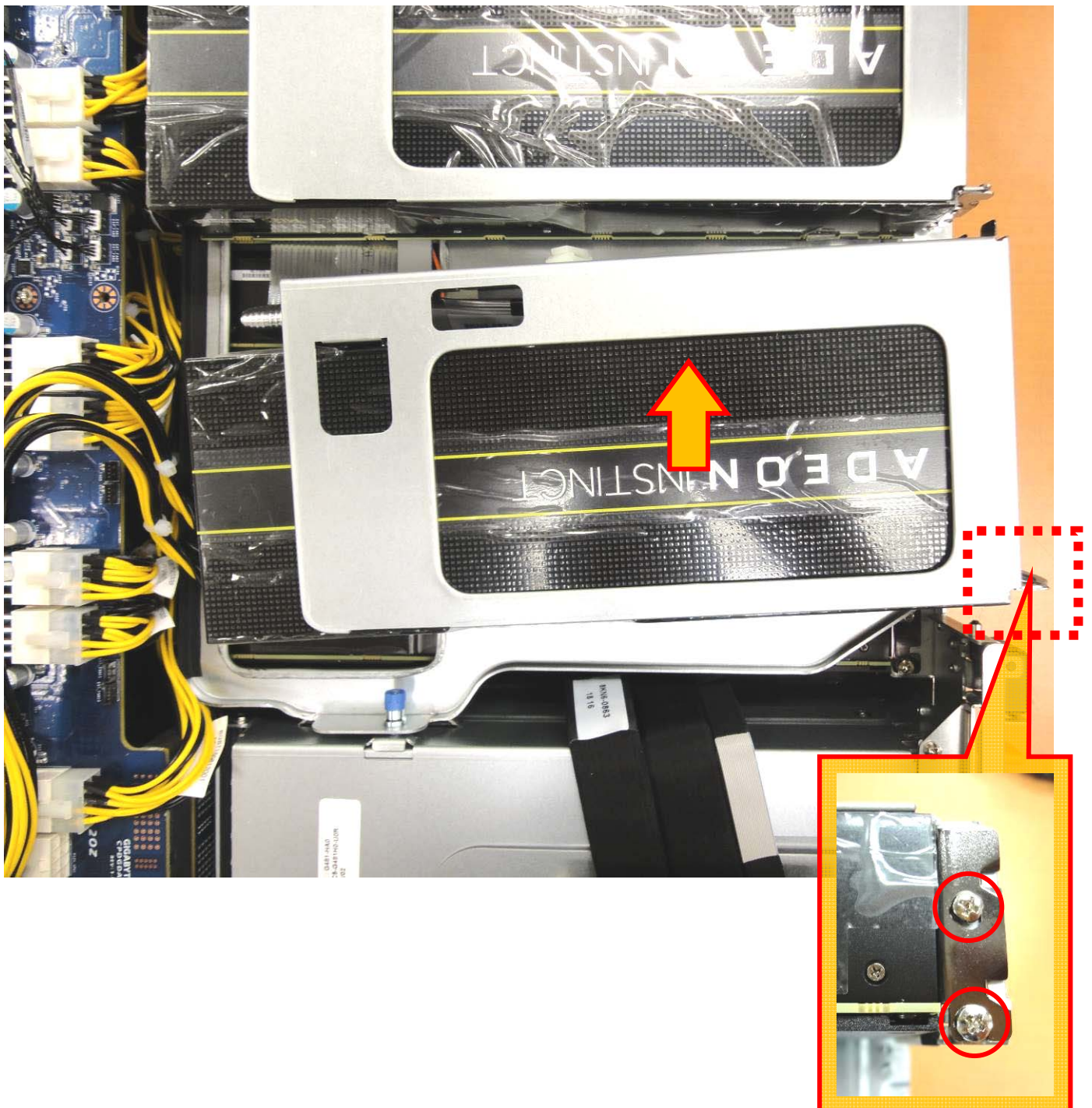
Document Ref. Number:

Revision: 0.1

Pages:  
18/21

Step	Method	Part number / Board model name	Q'ty	Comment
14	Follow the arrowhead to make GPU insert into GPU BKT, and fasten it with 2pcs M3x5L screws.			

### 2.14 Step 14



Issued Date: 2018-07/02  
Revised Date:

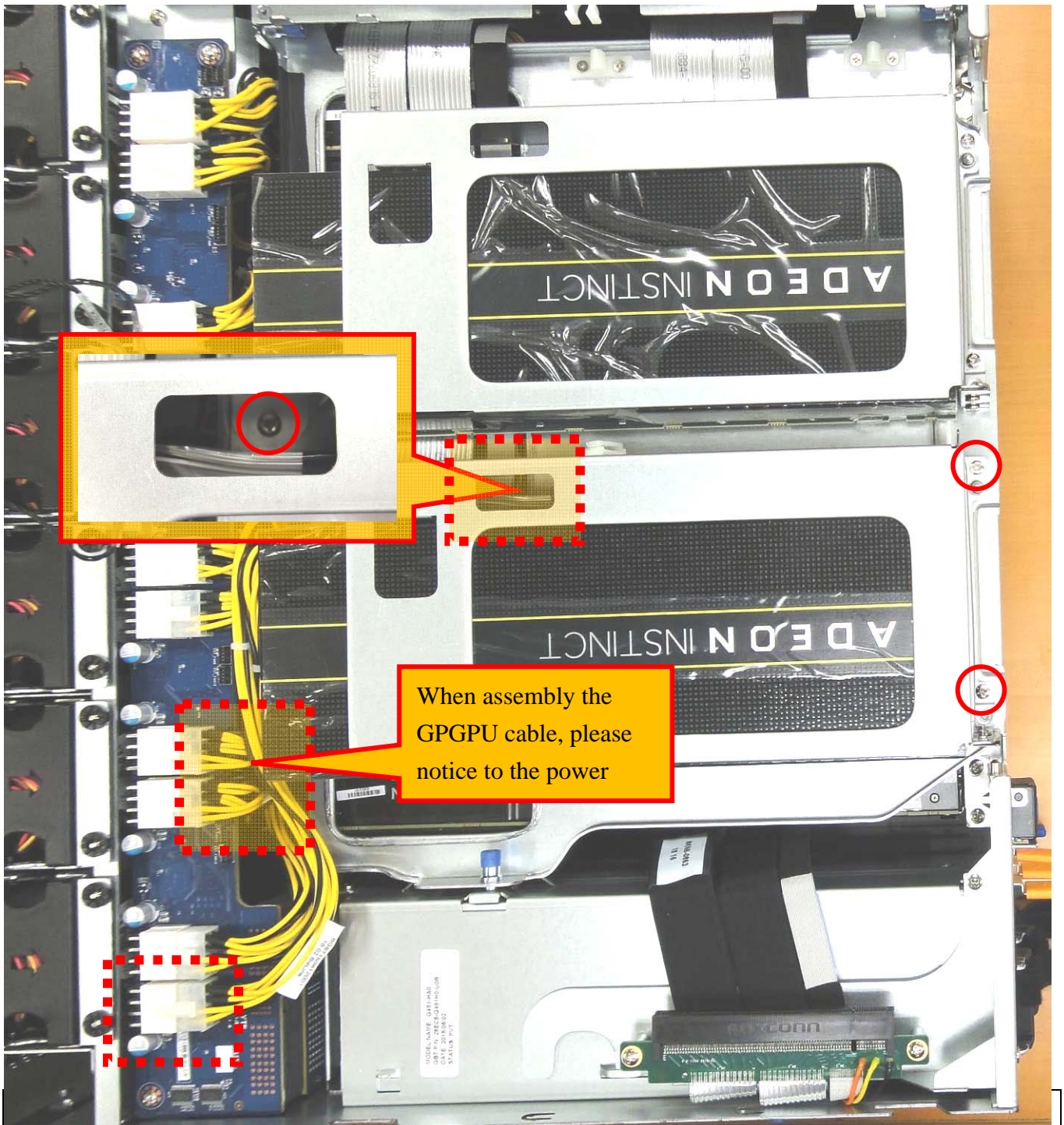
Document Ref. Number:

Revision: 0.1

Pages:  
19/21

Step	Method	Part number / Board model name	Q'ty	Comment
15	When done the GPU to assembly it with BKT, put it on tray and fasten it with 3pc x 5L screws. Put power cable with GPU Power/ B and trim the cable.			

### 2.15 Step 15



Issued Date: 2018-07/02  
Revised Date:

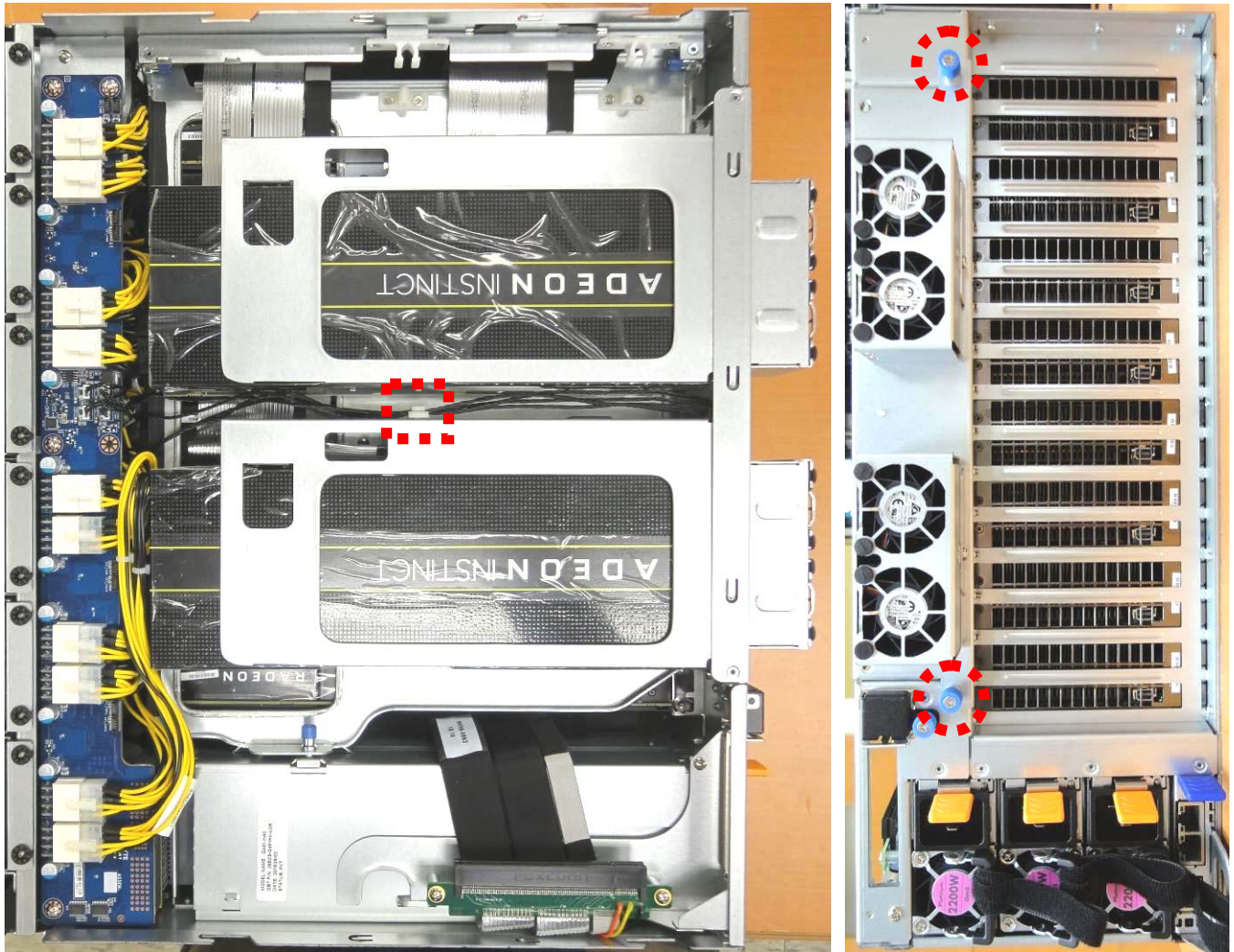
Document Ref. Number:

Revision: 0.1

Pages:  
20/21

		Board model name		
16	Assembly the 40 Fan kit and fasten it with Thumb screws then put the fan cable with clip then trim it.			

### 2.16 Step 16



Issued Date: 2018-07/02  
Revised Date:

Document Ref. Number:

Revision: 0.1

Pages:  
21/21

Step	Method	Part number / Board model name	Q'ty	Comment
17	Put back the fan duct back to system			

### 2.17 Step 17

