

GIGABYTE™

S10

USER'S MANUAL

使用手冊

● English

V2.0



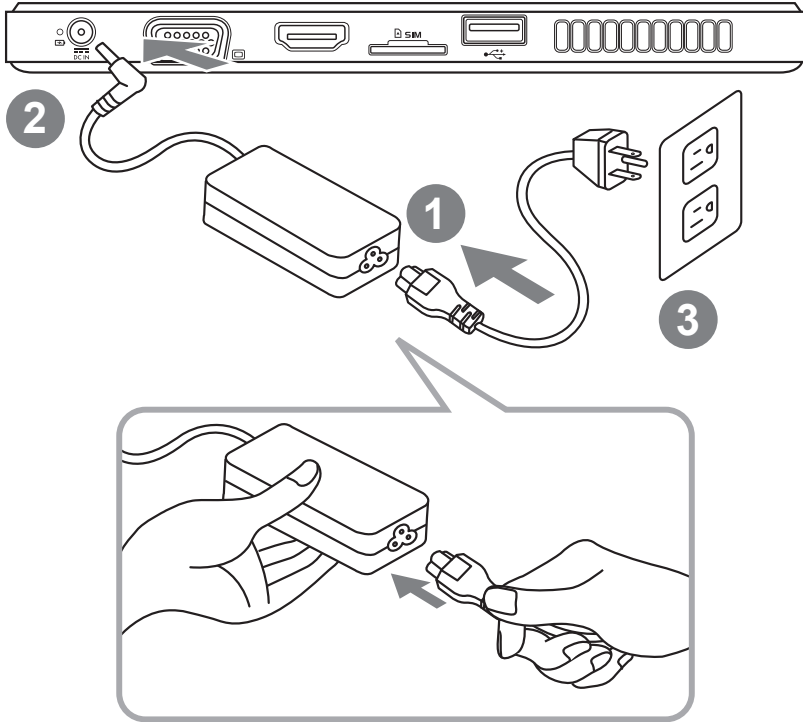
* Images Used for Reference Only



Congratulations on your purchase of the GIGABYTE Slate PC!

This manual will help you to get started with setting up your Slate PC. The final product configuration depends on the model at the point of your purchase. GIGABYTE reserves the right to amend without prior notice. For more detailed information, please visit our website at <http://www.gigabyte.com>.

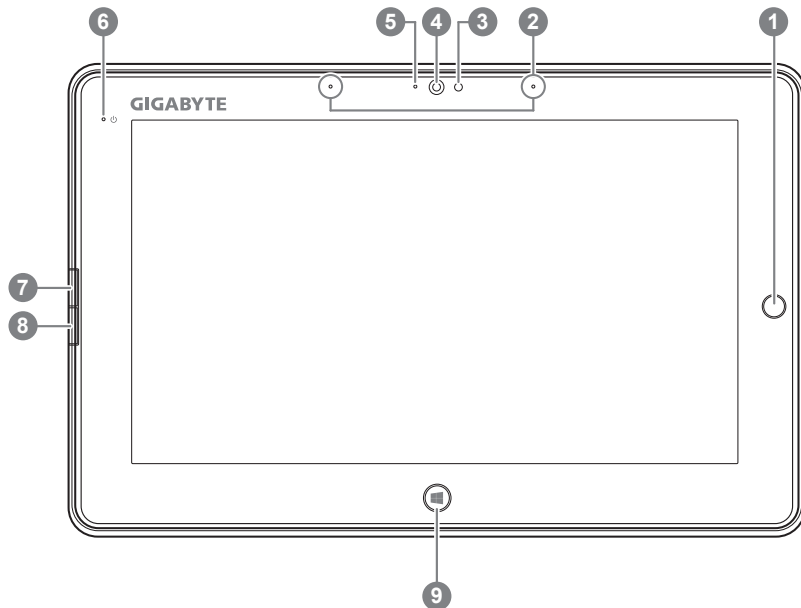
Using GIGABYTE Slate PC for the First Time



- 1 Connect the power cord to the AC adapter.
- 2 Connect the AC adapter to the DC-in jack of the Slate PC.
- 3 Connect the power cord to the power outlet.
- 4 While the Battery Indicator lights on, press the Power Button to turn on the Slate PC.

GIGABYTE Slate PC Tour

Panoramic View

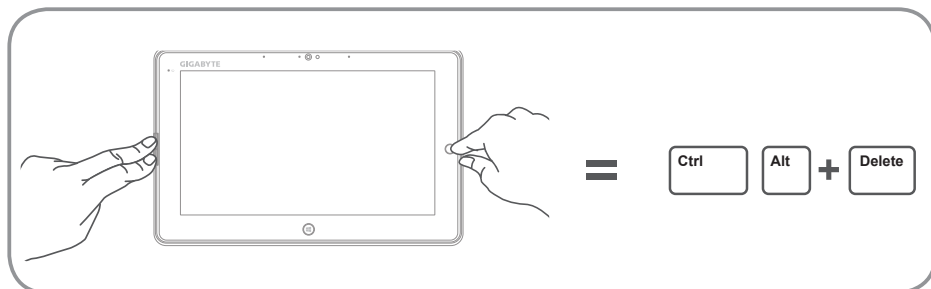


- 1 Directing Hot Key ①
- 2 Mic-in
- 3 Light sensor
- 4 Webcam
- 5 Webcam Indicator
- 6 Power Status Indicator

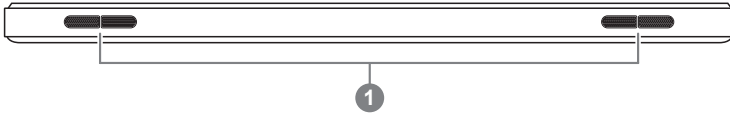
- 7 Left Button of Mouse
- 8 Right Button of Mouse
- 9 Windows Button ②

- ① To control mouse direction; press the directing hot key to simulate as left key of mouse.
- ② Back to Windows 8 Style UI mode.

Tip: "Left click + Right click of mouse + Directing Hot Key" operate as the function of "Ctrl+Alt+Del".

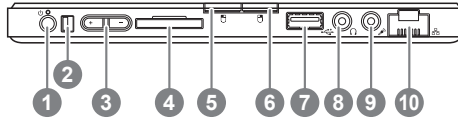


Top View



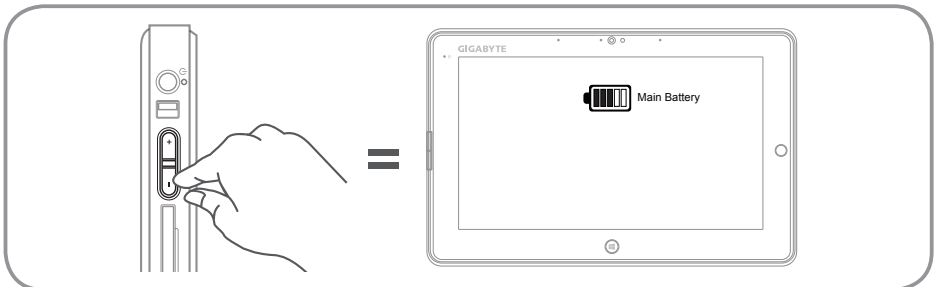
- 1 Speakers

Left View

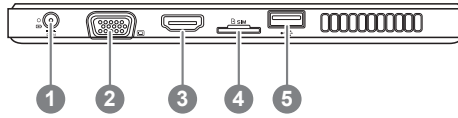


- 1 Power Button
 - 2 Rotation Lock Button
 - 3 Volume Control Key ^③
 - 4 SD Card Reader
 - 5 Left Button of Mouse
 - 6 Right Button of Mouse
 - 7 USB Port
 - 8 Headphone Jack
 - 9 Microphone Jack
 - 10 Ethernet Port
- ③ Press "+" or "-" to control volume.
- Press and release the Power button to turn on the operation system. Press "+" to enter into GIGABYTE BIOS Setup Utility. USB Keyboard is recommended to use for setting up BIOS functions under GIGABYTE BIOS Setup Utility.
 - Press and release the Power button to turn on the operation system. Press "-" to enter into GIGABYTE System Recovery. Use Directing Hot Key to operate GIGABYTE Smart Recovery.

Tip: Press the "-" volume button when the computer is off and the display will indicate the battery capacity status.



Right View



1 DC-in Jack

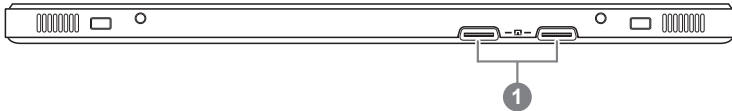
2 D-sub (VGA) Port

3 HDMI Port

4 SIM Card Slot

5 USB Port

Base View



1 Docking and extended battery connection ports



Warning:

DO NOT remove the built-in lithium battery. For any service needs, please contact your local GIGABYTE Authorized Service Center.

■ GIGABYTE Smart Manager

You can activate GIGABYTE Smart Manager by double clicking on the shortcut icon on the desktop if the machine you purchased has the operation system built-in. GIGABYTE Smart Manager is an icon-based control interface, enabling users to intuitively access common system setup as well as GIGABYTE exclusive utilities. Please be noted that the GIGABYTE Smart Manager interface, icons, utilities and software versions may vary based on the purchased models. Please operate GIGABYTE Smart Manager according to the default built-in version.

■ GIGABYTE Driver Update Utility

You can search devices driver and update it online by double clicking on the shortcut icon on the desktop if the machine you purchased has the operating system built-in. GIGABYTE Driver Update Utility can search the latest drivers and be downloaded automatically. Users are able to tell from the driver version on the machine and online that decide to update drivers.

■ Activate GIGABYTE BIOS Setup Utility

Press and release the Power Button to turn on the operation system. Press "+" to enter into GIGABYTE BIOS Setup Utility. It is recommended to use USB keyboard for setting up BIOS functions under BIOS setup Utility.

Smart USB Backup Guide (Original: Recovery Image USB)

⚠ WARNING

- You can backup original recovery image through this application in case of losing by device damage.
- You can backup original recovery image to USB disk and restore the system if any storage system replacement with the recovery USB disk.
- Before you restore the system through the recovery USB disk, please make sure that you have already made the backup of your data.
- Please DO NOT shut down or un-plug the system when performing backup through recovery USB disk.

1



- Please plug in the USB disk which is at least 20GB in capacity to make the original image (backup the data in USB first. All data will be eliminated during the creation of recovery USB disk)

2



- Insert the driver disk to your optical drive and run the install of “Smart USB Backup” (for none-ODD model, please use USB ODD device or download from <http://www.gigabyte.com>)

3



- Run the “Smart USB Backup” after finishing the install.

4



- Select your USB disk from the drop-down list and start to create the recovery USB disk.

5

- The window will pop out when the creation of recovery disk is done.
- Please press F12 on starting the system when you need to restore the system. Select “boot from recovery USB disk” and the system will be restored.
- The time needed for restore will be around 30 mins(time needed may vary by USB disk model) .

Recovery Guide

System Recovery (Restore your laptop operating system)

When something is going wrong with the laptop operating system, the storage of the laptop has a hidden partition containing a full back up image of the operating system that can be used to restore the system to factory default settings.



Note

- If the storage has been switched or the partition deleted, the recovery option will no longer be available and a recovery service will be needed.
- The recovery function is only available on devices with O/S preinstalled. Devices with DOS do not have the recovery function.

Launch System Recovery

The system recovery feature is preinstalled before the laptop is shipped from the factory. The option menu allows you to launch the Windows recovery tool to reinstall the operating system to factory default.

The brief introduction below will show you how to start the recovery tool and restore your system.



All ready to go

Make sure your PC is plugged in. This will take a few minutes.

Windows 8 Recovery Guide

1

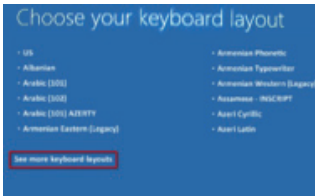
Turn off and restart the laptop.

2



Press and release the Power button to turn on the operation system. Press “-” to enter into GIGABYTE System Recovery. Use Directing Hot Key to operate GIGABYTE Smart Recovery.

3



Choose your keyboard layout.

You can press “See more keyboard layouts” to see next page of languages.

4



Choose “Troubleshoot” to enter the recovery settings.

(Also you can choose “Continue” to exit recovery system and continue to Windows 8 for files or data backup.)



There are two options for system recovery

• Refresh your PC

You can refresh your laptop to improve the system stability without losing your files.

• Reset your PC

If you want to remove all of your files, you can reset your PC completely.

Caution:All personal data and files will be lost.

5

**Choose “Refresh your PC”**

[Click on “Next”] > [Choose a target operating system.] > [Click on “Windows 8”.] > [Click on “Refresh” to execute recovery function.]

**Here are what will happen**

- Your files and personalization settings won't be changed.
- Your PC settings will be restored to factory default settings.
- Apps from Windows Store will be kept.
- Apps you installed from discs or websites will be removed.
- A list of removed apps will be saved on your desktop.

**Choose “Reset your PC”**

[Click on “Next”] > [Choose a target operating system.] > [Click on “Windows 8”.] > [Choose an option to recover your system]

► Just remove my files

Only personal data and files will be removed, but computer settings will be kept.

► Fully clean the drive

The drive will be completely restored to factory default settings. It takes more time. > [Click on “Reset” to execute recovery function.]

**Here are what will happen**

- All of your personal files and apps will be removed.
- Your PC settings will be restored to factory default settings.

**Advanced options****System Restore**

Use a restore point recorded on your PC to restore Windows.

**System Image Recovery**

Recover Windows using a specific system image file.

**Automatic Repair**

Fix problems that keep Windows from loading.

**Command Prompt**

Use the Command Prompt for advanced troubleshooting.

**UEFI Firmware Settings**

Change settings in your PC's UEFI firmware.

Windows 8.1 Recovery Guide

1 Turn off and restart the laptop.

2



Press and release the Power button to turn on the operation system. Press “-” to enter into GIGABYTE System Recovery. Use Directing Hot Key to operate GIGABYTE Smart Recovery.

3



Choose “Troubleshoot” to enter the recovery settings. (Also you can choose “Continue” to exit recovery system and continue to Windows 8.1 for files or data backup.)



There are two options for system recovery

- **Refresh your PC**

You can refresh your laptop to improve the system stability without losing your files.

- **Reset your PC**

If you want to remove all of your files, you can reset your PC completely.

Caution: All personal data and files will be lost.

4



■ Choose “Refresh your PC”

Choose an account to continue.



Here are what will happen

- Your files and personalization settings won't be changed.
- Your PC settings will be restored to factory default settings.
- Apps from Windows Store will be kept.
- Apps you installed from discs or websites will be removed.
- A list of removed apps will be saved on your desktop.



■ Choose “Reset your PC”

▶ Just remove my files

Only personal data and files will be removed, but computer settings will be kept.

▶ Fully clean the drive

The drive will be completely restored to factory default settings. It takes more time. > [Click on “Reset” to execute recovery function.]



Here are what will happen

- All of your personal files and apps will be removed.
- Your PC settings will be restored to factory default settings.



■ Advanced options



System Restore

Use a restore point recorded on your PC to restore Windows.



System Image Recovery

Recover Windows using a specific system image file.



Automatic Repair

Fix problems that keep Windows from loading.



Command Prompt

Use the Command Prompt for advanced troubleshooting.



UEFI Firmware Settings

Change settings in your PC's UEFI firmware.



Startup Settings

Change Windows Startup behavior.

Appendix

■ Warranty & Service :

Warranty and service and related information please refer to the warranty card or GIGABYTE service website as the below link:

<http://www.gigabyte.com/support-downloads/technical-support.aspx>

■ FAQ :

FAQ (Frequent Asked Questions) please refer to the below link:

<http://www.gigabyte.com/support-downloads/faq.aspx>