

# Table of Contents

- Configuring Audio Input and Output .....2
  - 1-1 Configuring 2/4/5.1/7.1-Channel Audio .....2
  - 1-2 Configuring S/PDIF Out .....4
  - 1-3 Configuring Microphone Recording.....5
  - 1-4 Using the Voice Recorder .....7

# Configuring Audio Input and Output

## 1-1 Configuring 2/4/5.1/7.1-Channel Audio

The motherboard provides six audio jacks on the back panel which support 2/4/5.1/7.1-channel <sup>(Note)</sup> audio. The picture to the right shows the default audio jack assignments.




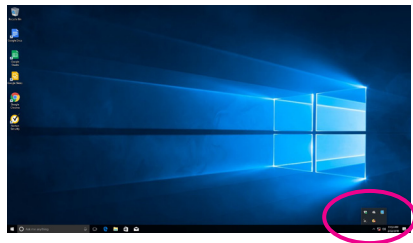
### High Definition Audio (HD Audio)

HD Audio includes multiple high quality digital-to-analog converters (DACs) and features multistreaming capabilities that allow multiple audio streams (in and out) to be simultaneously processed. For example, users can listen to MP3 music, have an Internet chat, make a telephone call over the Internet, and etc. all at the same time.

### A. Configuring Speakers

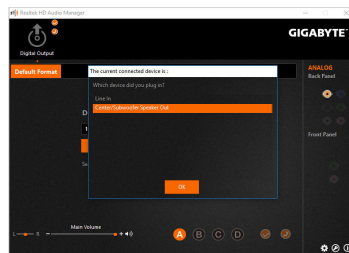
Step 1:

After installing the audio driver, restart your computer. On the Windows desktop, click the **Realtek HD Audio Manager** icon  in the notification area to access the HD Audio Manager.



Step 2:

Connect an audio device to an audio jack. The **The current connected device is** dialog box appears. Select the device according to the type of device you connect. Then click **OK**.



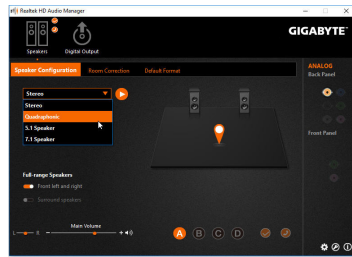
(Note) 2/4/5.1/7.1-Channel Audio Configurations:

Refer to the following for multi-channel speaker configurations.

- 2-channel audio: Headphone or Line out.
- 4-channel audio: Front speaker out and Rear speaker out.
- 5.1-channel audio: Front speaker out, Rear speaker out, and Center/Subwoofer speaker out.
- 7.1-channel audio: Front speaker out, Rear speaker out, Center/Subwoofer speaker out, and Side speaker out.

Step 3:

On the **Speakers** screen, click the **Speaker Configuration** tab. In the **Speaker Configuration** list, select **Stereo**, **Quadraphonic**, **5.1 Speaker**, or **7.1 Speaker** according to the type of speaker configuration you wish to set up. Then the speaker setup is completed.



## B. Configuring Sound Effect

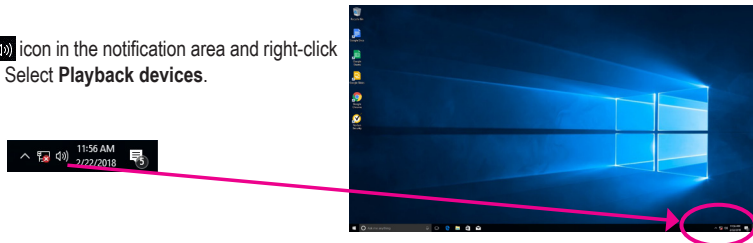
You may configure an audio environment on the **Sound Effects** tab.

### \* Configuring the Headphone

When you connect your headphone to the Line out jack on the back panel or front panel, make sure the default playback device is configured correctly.

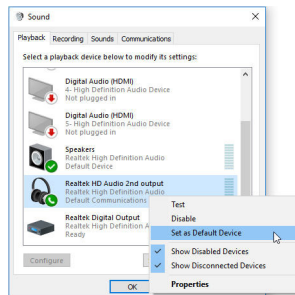
Step 1:

Locate the  icon in the notification area and right-click on this icon. Select **Playback devices**.



Step 2:

On the **Playback** tab, make sure your headphone is set as the default playback device. For the device connected to the Line out jack on the back panel, right-click on **Speakers** and select **Set as Default Device**; for the device connected to the Line out jack on the front panel, right-click on **Realtek HD Audio 2nd output**.

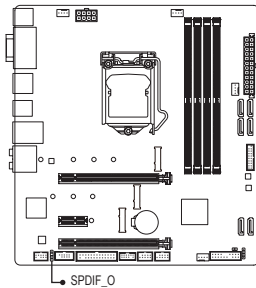


## 1-2 Configuring S/PDIF Out

The S/PDIF Out jack can transmit audio signals to an external decoder for decoding to get the best audio quality.

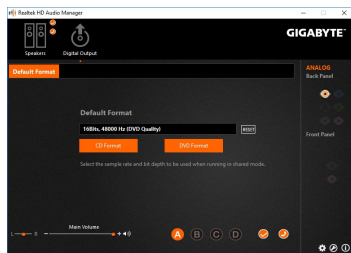
### 1. Connecting a S/PDIF Out Cable:

Connect a S/PDIF optical cable to the SPDIF\_O header as shown below and an external decoder for transmitting the S/PDIF digital audio signals.




### 2. Configuring S/PDIF Out:

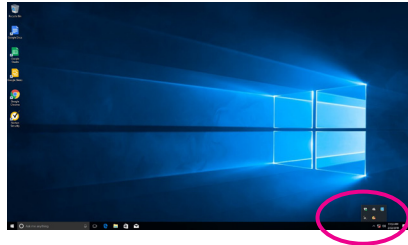
On the **Digital Output** screen, click the **Default Format** tab and then select the sample rate and bit depth. Click **OK** to complete.



## 1-3 Configuring Microphone Recording

Step 1:

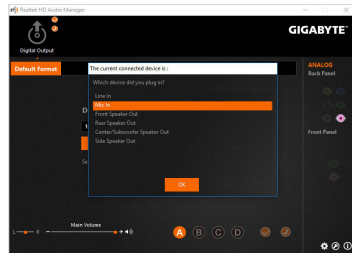
After installing the audio driver, restart your computer. On the Windows desktop, click the **Realtek HD Audio Manager** icon  in the notification area to access the **HD Audio Manager**.



Step 2:

Connect your microphone to the Mic in jack on the back panel or the Mic in jack on the front panel. Then configure the jack for microphone functionality.

Note: The microphone functions on the front panel and back panel cannot be used at the same time.



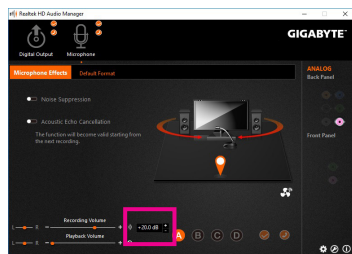
Step 3:

Go to the Microphone screen. Do not mute the recording volume, or you'll not be able to record the sound. To hear the sound being recorded during the recording process, do not mute the playback volume. It is recommended that you set the volumes at a middle level.



Step 4:

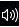
To raise the recording and playback volume for the microphone, you can set the Microphone Boost level on the right of the **Recording Volume** slider.

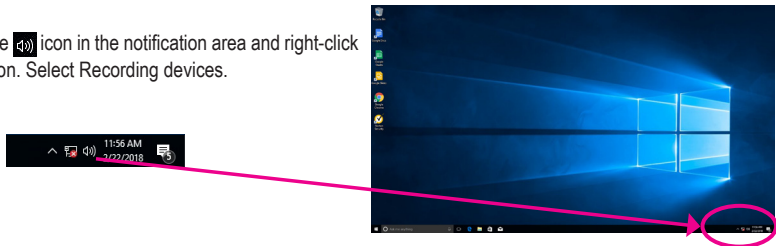


### \* Enabling Stereo Mix

If the HD Audio Manager does not display the recording device you wish to use, refer to the steps below. The following steps explain how to enable Stereo Mix (which may be needed when you want to record sound from your computer).

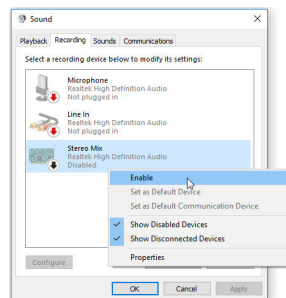
#### Step 1:

Locate the  icon in the notification area and right-click on this icon. Select Recording devices.



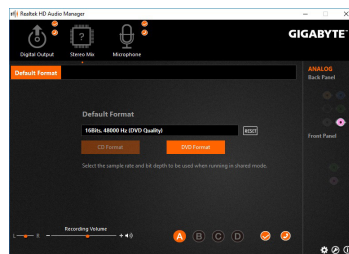
#### Step 2:

On the **Recording** tab, right-click on **Stereo Mix** item and select **Enable**. Then set it as the default device. (if you do not see **Stereo Mix**, right-click on an empty space and select **Show Disabled Devices**.)



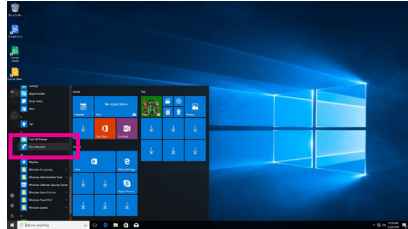
#### Step 3:

Now you can access the **HD Audio Manager** to configure **Stereo Mix** and use **Voice Recorder** to record the sound.





## 1-4 Using the Voice Recorder

After setting up the audio input device, to open the **Voice Recorder**, go to the Start menu and search for **Voice Recorder**.



### A. Recording Sound

1. To begin the recording, click the **Record** icon .
2. To stop the recording, click the **Stop recording** icon .

### B. Playing the Recorded Sound

The recordings will be saved in Documents>Sound Recordings. Voice Recorder records audio in MPEG-4 (.m4a) format. You can play the recording with a digital media player program that supports the audio file format.