

GIGABYTE™

D1080

USER'S MANUAL

● English

V1.0

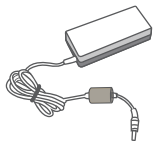


Congratulations on your purchase of the GIGABYTE Booktop Express.

This manual will help you to get started with setting up your Booktop Express. The final product configuration depends on the model at the point of your purchase. GIGABYTE reserves the right to amend without prior notice. For more detailed information, please visit our website at www.gigabyte.com

1 Check Supplied Items

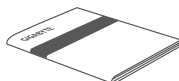
AC Adapter



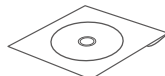
Power Cord



Manual




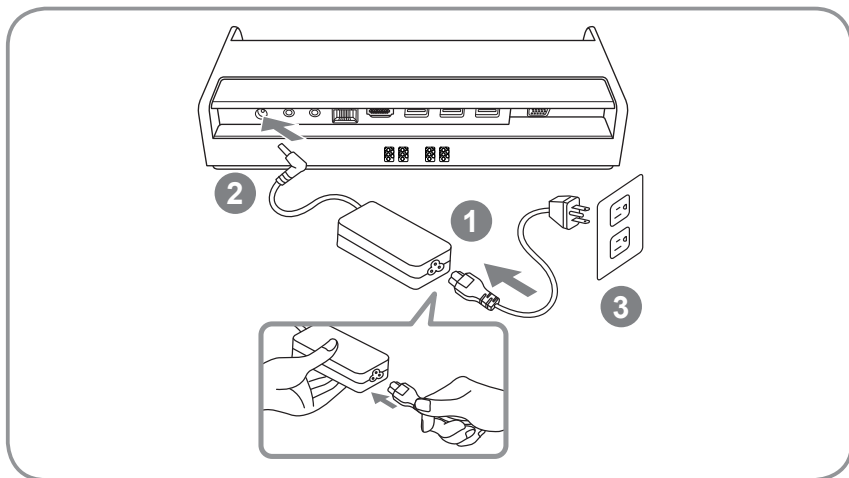
Driver CD



* The illustrations in this document may appear differently from your model.

2 Using GIGABYTE Booktop Express for the First Time

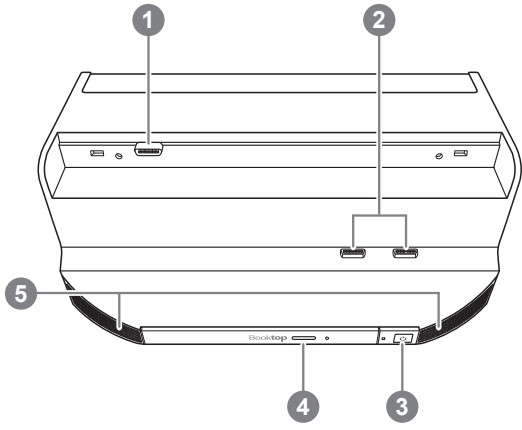
 "When using the Booktop Express for the first time, please insert the Driver CD into the Optical Disk Drive and install the GIGABYTE™ Booktop Express. It includes some applications, such as a calendar, an alarm clock, a music player and more, can advance the Table NB function. In addition, this installation will ask you to install "Geosense Location Sensor" to activate positioning system such as climate detection and so on. You can disable the function at control panel "Location and Other Sensors" if you do not need the function. The applications and interface may vary in accordance to different versions of the software. Please note, the GIGABYTE™ Booktop Express is only supported on Windows® 7 Home Premium version and above."



- 1 Connect the power cord to the AC adapter
- 2 Connect the AC adapter to the DC-in jack of the Booktop Express
- 3 Connect the power cord to the power outlet
- 4 Press the Power Button to turn on the GIGABYTE Booktop Express.

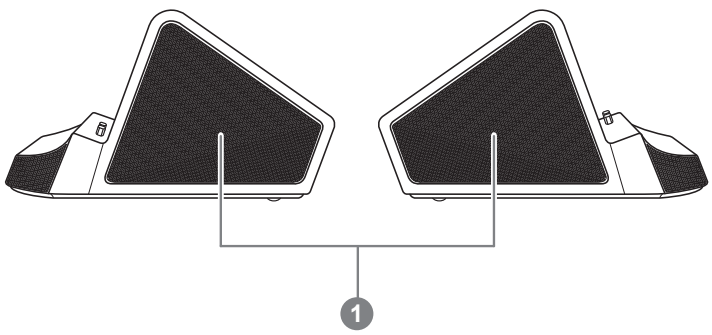
3 GIGABYTE Booktop Express Tour

Panoramic View



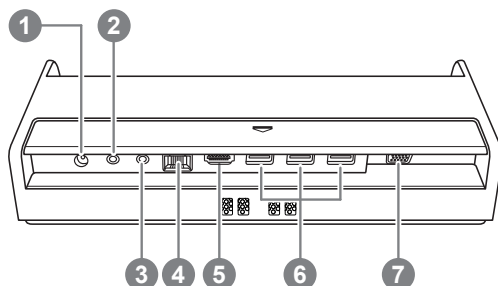
- 1 Extended battery connection port: In order to stabilize the extended battery, please make sure the battery latches are in the lock position.
- 2 Booktop Express connection port: Connects to Slate PC
- 3 Power Button
- 4 Optical Disk Drive Button
- 5 Speakers

Right View & Left View



- 1 Speaker: Woofer speakers ①
 - ① This specification is for users' reference only. The final configuration depends on the Booktop Express users' point of purchase.

Back View



1 DC-in Jack

2 Headphone Jack

3 Microphone Jack

4 Ethernet Port

5 HDMI Port ^②

6 USB port

7 D-sub (VGA) port

- ^② This specification is for users' reference only. The final configuration depends on the model of Booktop Express users' point of purchase.

4 Specifications

Item	Specification
I/O port	D-sub, USB Port x3, RJ45, Microphone Jack, Headphone Jack, DC-in Jack, Booktop Express Connection Port, Extended Battery Connection Port, HDMI Port. ^③
Optical Disk Drive	DVD-Super Multi-Layer Drive
Speaker	Stereo and woofer speakers ^③

- ^③ This specification is for users' reference only. The final configuration depends on the model of Booktop Express users' point of purchase.

5 Appendix

■ Warranty & Service

For Warranty, Service and related information, please refer to the warranty card or GIGABYTE service website as the following link:

<http://www.gigabyte.com/support-downloads/technical-support.aspx>

■ FAQ

For FAQ (Frequent Asked Questions), please refer to the following link:

<http://www.gigabyte.com/support-downloads/faq.aspx>

www.gigabyte.com