



GAMING MONITOR

OSD SIDEKICK USER GUIDE

Copyright

© 2022 GIGA-BYTE TECHNOLOGY CO., LTD. All rights reserved.
The trademarks mentioned in this manual are legally registered to their respective owners.

Disclaimer

Information in this manual is protected by copyright laws and is the property of GIGABYTE.

Changes to the specifications and features in this manual may be made by GIGABYTE without prior notice.

No part of this manual may be reproduced, copied, translated, transmitted, or published in any form or by any means without GIGABYTE's prior written permission.

For more information, check on our website at:
<https://www.gigabyte.com>



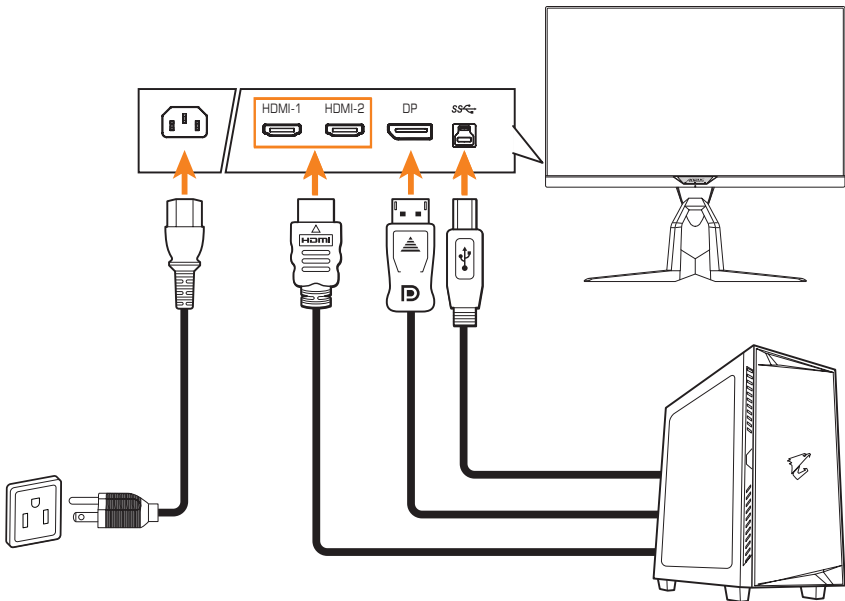
CONTENTS

SOFTWARE INSTALLATION	4
Preparation.....	4
Installing the Software.....	5
Uninstalling the Software	7
USING THE SOFTWARE	8
Launching the Software.....	8
Configuring the Settings.....	8
DISPLAY SETTING.....	9
HOT KEY.....	18
GENERAL SETTING.....	20
ANC.....	22
ABOUT.....	23

SOFTWARE INSTALLATION

Preparation

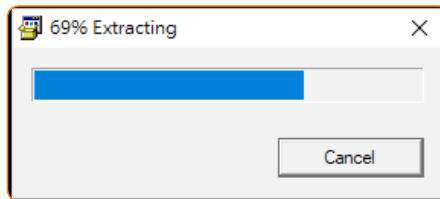
1. Connect one end of a USB (A-Male to B-Male) cable to the USB port of the LCD monitor and the other end to the USB port of your computer.
2. Connect any of the following:
 - One end of an HDMI cable to the HDMI port of the LCD monitor and the other end to the HDMI port of your computer.
 - One end of a DisplayPort cable to the DP port of the LCD monitor and the other end to the DP port of your computer.
3. Plug the power cables of your computer and the LCD monitor into a power outlet.
4. Turn on your computer and the LCD monitor.



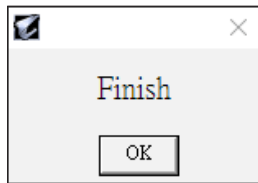
Installing the Software

IMPORTANT! If you have installed an older version of the software on your computer, you have to remove the previously installed software first before proceeding with the following installation process. To uninstall the software, refer to the “Uninstalling the Software” section.

1. Insert the supplied CD into your CD-ROM drive. Then from the Windows desktop, double-click on **Computer** and locate the CD drive.
2. Browse and double-click **install.exe**. The install process will start automatically.

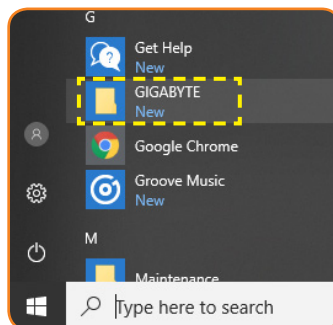


3. The software installation may take a few minutes. When the installation is complete, click **OK** to exit.

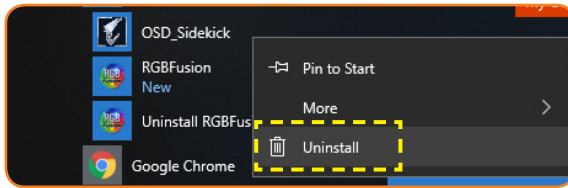


Uninstalling the Software

1. From the Windows desktop, click  and select **GIGABYTE**.

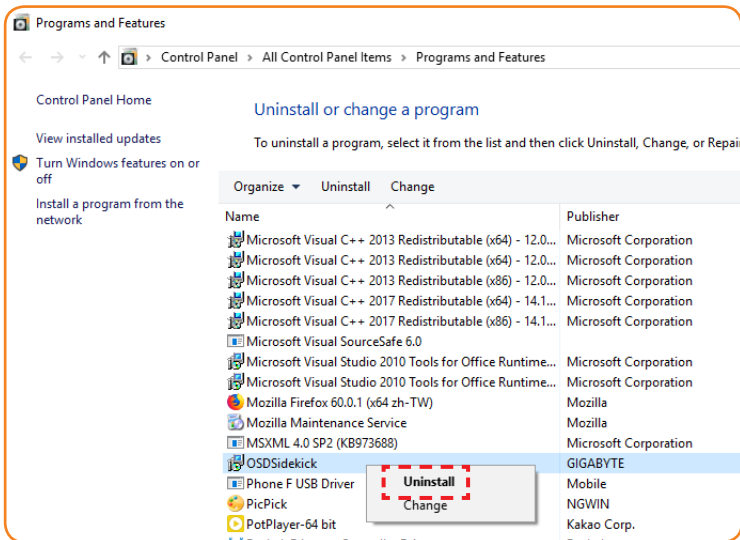


2. Right-click on **OSD_Sidekick**. Then select **Uninstall**.



3. The *Programs and Features* page appears on the screen. Select **OSDSidekick** from the list.

4. Right-click on **OSD_Sidekick** and select **Uninstall**. Then follow the on-screen instructions to uninstall the software.

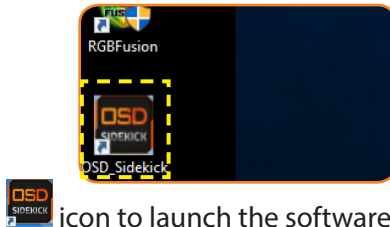


USING THE SOFTWARE

Launching the Software

IMPORTANT! Before launching the software, make sure your computer is connected to the LCD monitor through a USB cable as described in step 1 in “Preparation” on page 4.

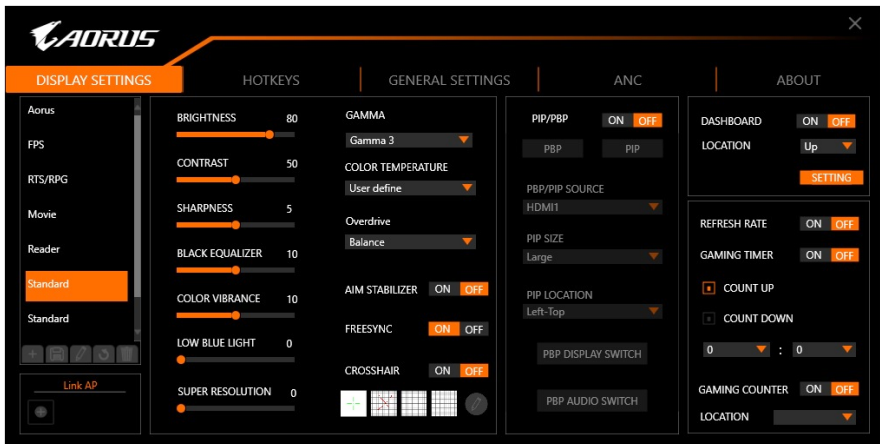
After the driver installation is complete, the OSD Sidekick software shortcut icon appears on the desktop.



Double-click the  icon to launch the software.

Configuring the Settings

Using the OSD Sidekick software, you can configure the advanced settings for the monitor.



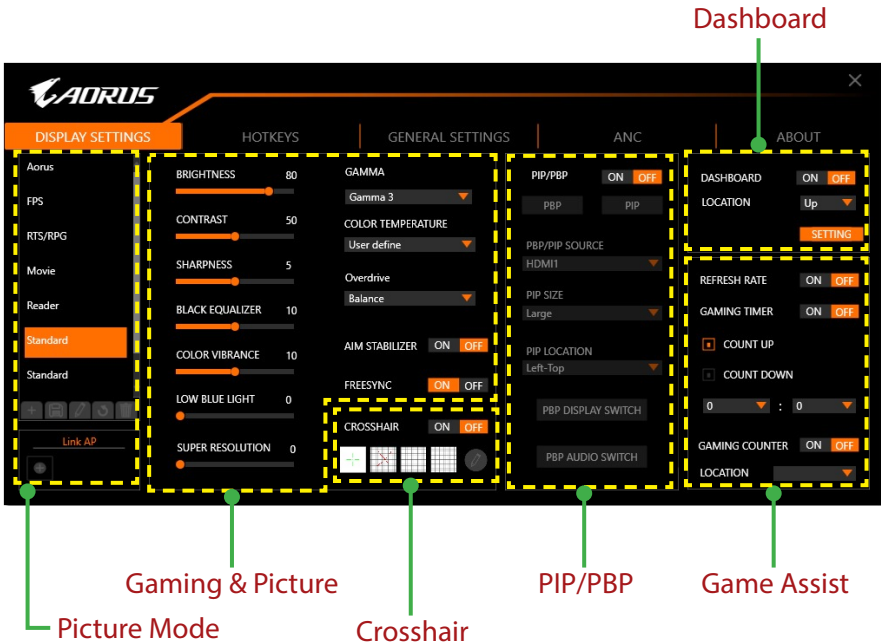
Note:

- Most of the configuration options are similar with the OSD menu and Quick menu that you can directly access using the **Control** button on the monitor. For more information, refer to the monitor user guide.
- To make the adjustment, generally, you can do one of the following:
 - ⇒ Drag the slider to adjust the setting.
 - ⇒ Click the **ON/OFF** button to enable or disable the function.

- ⇒ Click the ▼ icon to select the available option.
- All the changes will be applied directly to the monitor.

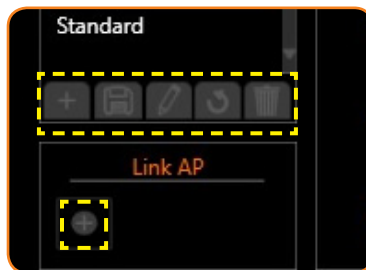
DISPLAY SETTING

Configure the game, image, multi-picture, Dashboard, and Game Assist related settings.



Configuring the Picture Mode Profiles

By default, there are 10 preset **Picture Mode** profiles. These profiles cannot be deleted. However, you can still do the following:

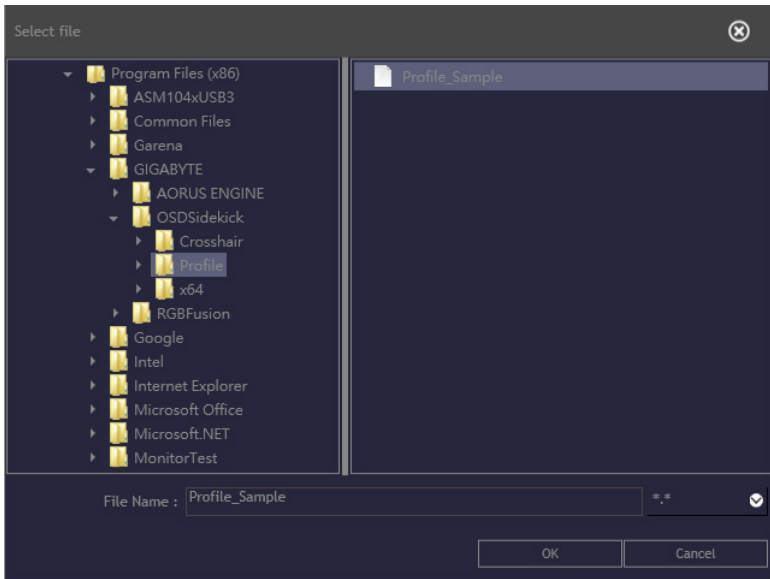


- ⇒ Click to add an additional profile or import other profile.

- ✓ To add an additional profile, select **Add Profile**.
Note: Make sure to configure the necessary *Gaming & Picture* settings before creating a new profile.
- ✓ To import other profile from the specified folder, select **Import Profile**.



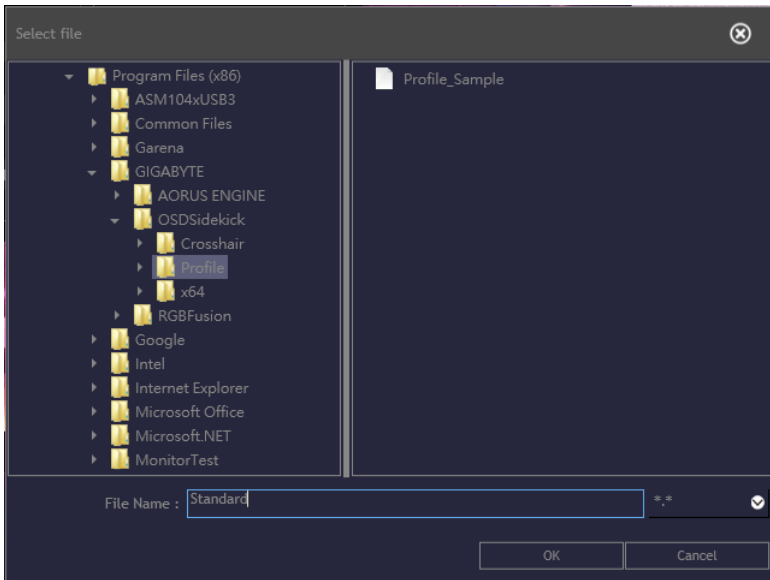
Browse the location and select the profile file to import. Then click **OK** to import the file.




Note: The default *Profile* folder is located at the OSDsidekick installation path.

⇒ Click  to export a profile to the specified folder.

Browse the location and enter the file name. Then click **OK** to export the file.




Note: The default **Profile** folder is located at the OSDSidekick installation path.

⇒ Click  to rename the profile name.

⇒ Click  to reset the preset **Picture Mode** profile to its default settings.

Note: The customized profile settings cannot be reset.

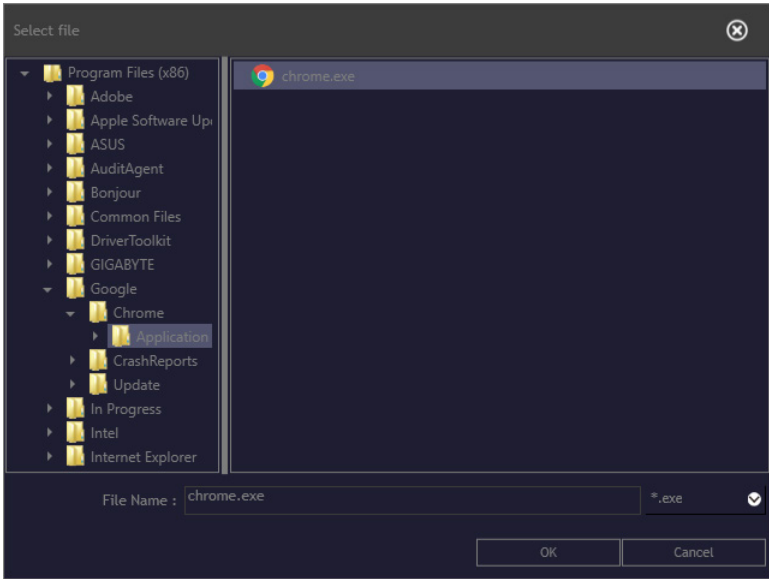
⇒ Click  to delete the customized profile.

Note: The user defined **Picture Mode** applies to the monitor **Custom 3**.

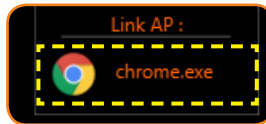
⇒ Click  to link the profile with an application.



Select the application (*.exe) you want to link and click **OK**.

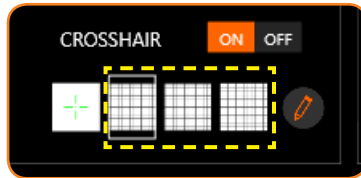


When you open that application, the display setting will automatically change to the profile you linked.

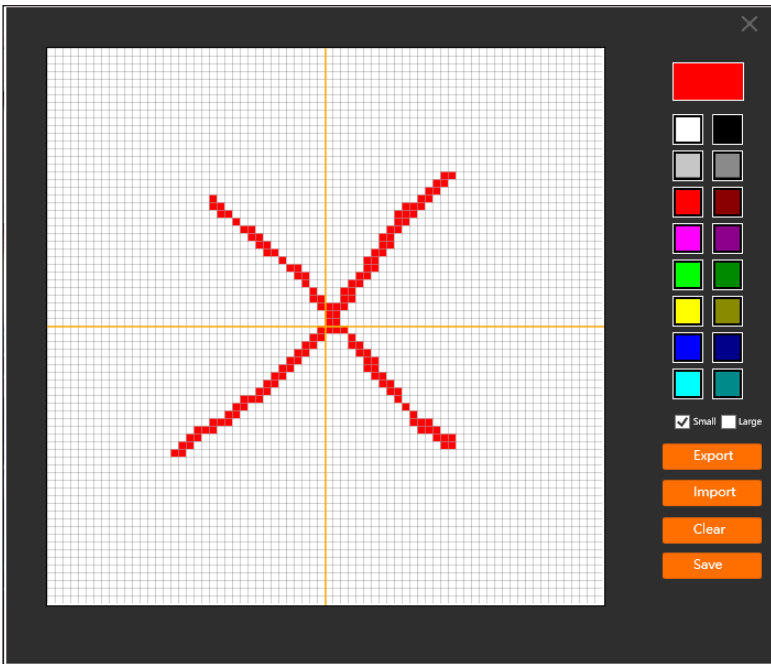


Customizing the Crosshair Cursor

Set the **CROSSHAIR** setting to **ON** to activate the function. Then select one of the rectangular grids (marked in the illustration below) and click



Select the desired color and line thickness. Then draw a new crosshair cursor.

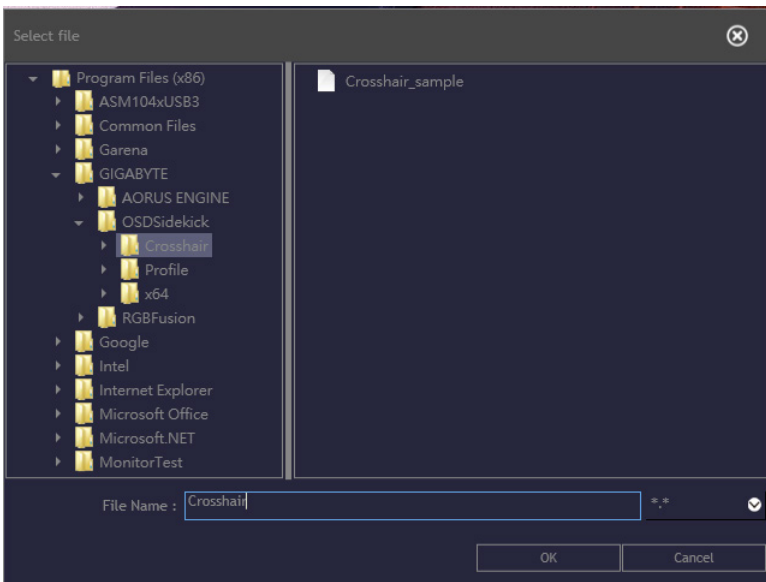


Once complete, click **Save**. The new crosshair cursor will appear on the screen.

Exporting/Importing the Crosshair Cursor



- ⇒ Click **Export** to export the Crosshair file to the specified folder. Browse the location and enter the file name. Then click **OK** to export the file.



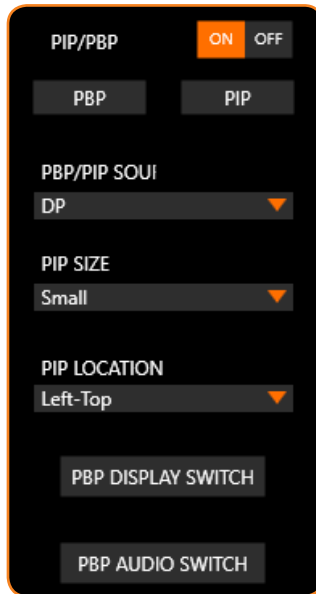
Note: The default **Crosshair** folder is located at the OSDsidekick installation path.

- ⇒ Click **Import** to import the Crosshair file from the specified folder. Browse the location and select the Crosshair file to import. Then click **OK** to import the file.

Note: The default **Crosshair** folder is located at the OSDsidekick installation path.

Customizing the PIP/PBP Settings

Set the **Picture-in-Picture (PIP)/ Picture-by-Picture (PBP)** setting to **ON** to activate the function. Select any of the following items to configure the **PIP/PBP** settings:

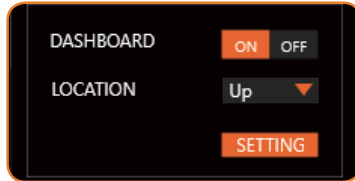


- ⇒ Click **PBP** to display the screen image from two sources side by side.
- ⇒ Click **PIP** to display the screen image from the main source on the full screen and the second source in a sub window.
- ⇒ In **PBP/PIP SOURCE**, click the ▼ icon to select the main source.
- ⇒ If you have selected the **PIP** layout, in **PIP SIZE**, click the ▼ icon to set the sub window size to **Large, Medium, or Small**.
- ⇒ If you have selected the **PIP** layout, in **PIP LOCATION**, click the ▼ icon to set the sub window location to **Left-Top, Right-Top, Left-Bottom, or Right-Bottom**.
- ⇒ Click **PBP DISPLAY SWITCH** to switch the main source and sub source, regardless the screen layout.
- ⇒ Click **PBP AUDIO SWITCH** to switch the audio source, regardless the screen layout.



Customizing the Dashboard Information

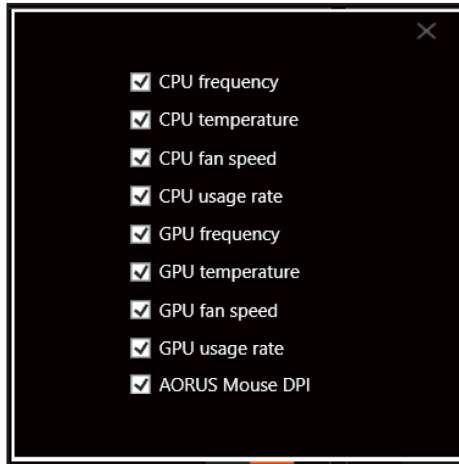
Set the **DASHBOARD** setting to **ON** to activate the function. Then configure the following settings:



⇒ In **LOCATION**, click the ▼ icon to set the location of the options on the screen to **Up** or **Down**.

Note: The **DASHBOARD** location on the right side or on the left side of the screen depends on the **Game Assist** location setting. For example, if the **Game Assist** items are on the left side of the screen, then the **DASHBOARD** items are on the right side of the screen and vice versa.

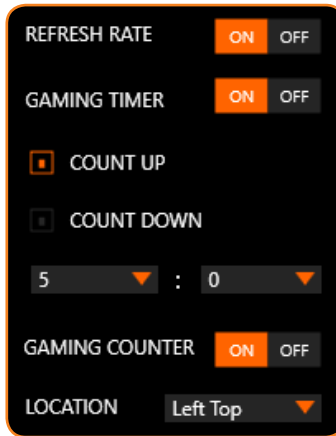
⇒ Click **SETTINGS** and check the desired option(s) to be shown on the screen.



Note: Uncheck the option to hide it from the screen.

Customizing the Game Assist Settings

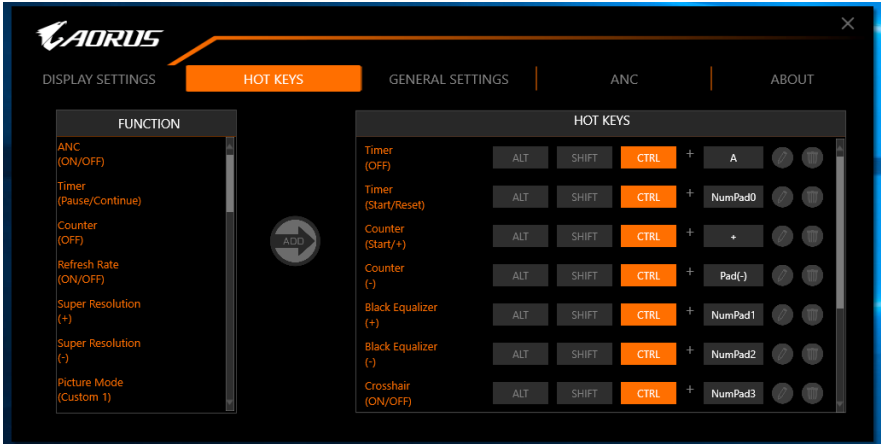
Configure the following **Game Assist** settings:



- ⇒ Set the **REFRESH RATE** setting to **ON** to enable displaying the refresh rate.
- ⇒ Set the **GAMING TIMER** setting to **ON** to enable displaying the gaming timer.
 - Select either **COUNT UP** or **COUNT DOWN** the timer.
 - Click the ▼ icon to set the countdown time.
- ⇒ Set the **GAMING COUNTER** setting to **ON** to enable displaying the gaming counter.
- ⇒ In **LOCATION**, click the ▼ icon to set the gaming counter location on the screen to **Left Top**, **Left Center**, **Left Bottom**, **Right Top**, **Right Center**, or **Right Bottom**.

HOT KEY

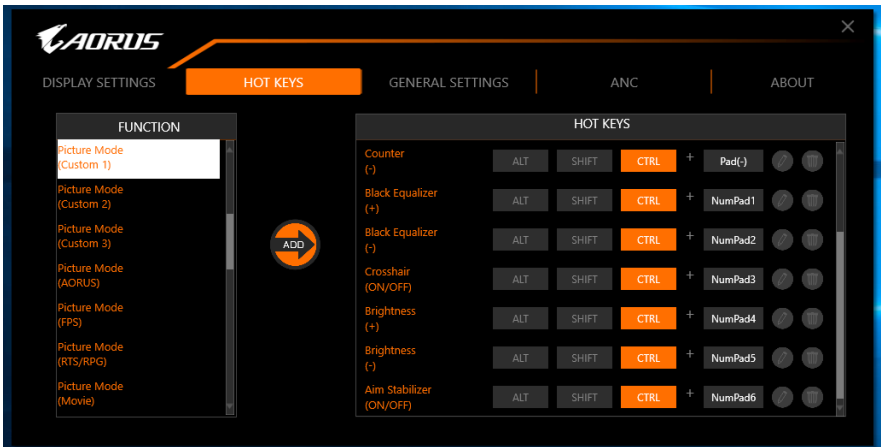
Manage the keyboard shortcut to access a particular function which you are using frequently.

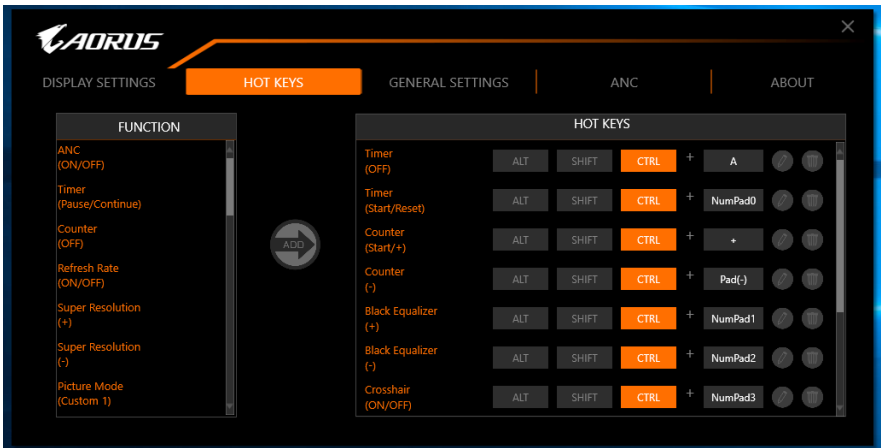


Note: By default, the assigned hot keys appears on the right panel.

Assigning a Hot Key

On the left panel, scroll down to select the function you want to assign a hot key to.




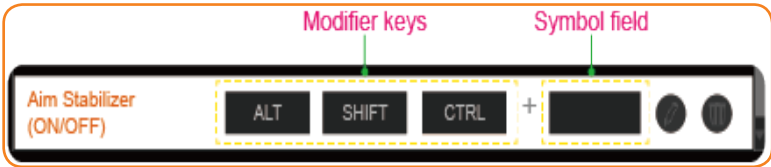


Note: A function hot key consists of one or more modifier keys (Alt, Shift, Ctrl) plus a symbol.

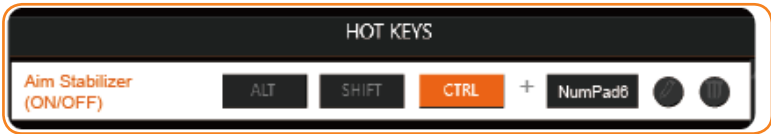
Editing a Hot Key

To edit a hot key, do as follows:

1. Select the function on the left panel and click ADD.
2. Assign a new hot key:
 - a. Click on one or more modified key(s): **ALT**, **SHIFT**, and/or **CTRL**.
 - b. Click on the symbol field and enter any desired symbol.
 - c. Click  to confirm.



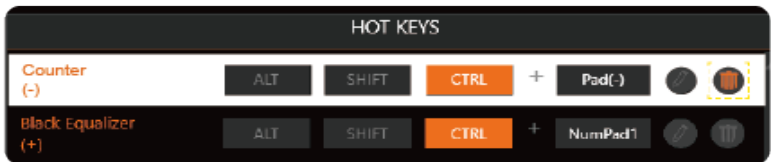
The hot key of the function appears on the right panel as illustrated below:



Note: If a function has been set to a hot key, the item in the left panel will be disappeared. To reassign the hot key, you have delete first the current hot key. To delete, refer to the “Deleting a Hot Key” section below.

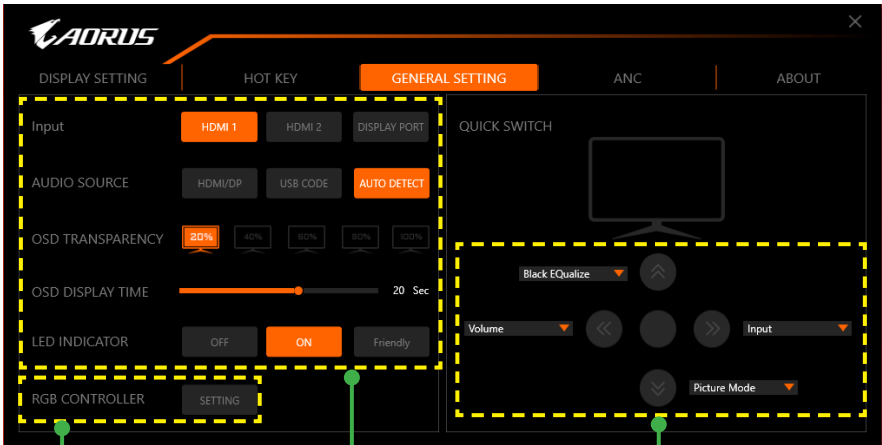
Deleting a Hot Key

On the right panel, select the hot key you want to delete and click .



GENERAL SETTING

Configure the display screen, system, and hot keys (for the **Control** button) related settings.



RGB Controller

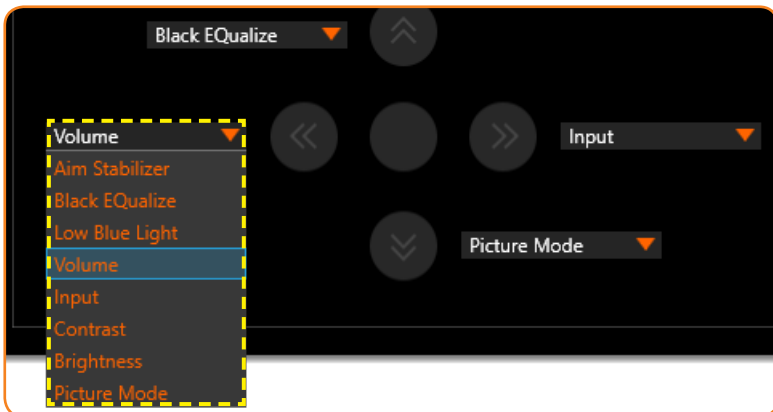
Display & System

Hot Keys for
Control button

Changing the Hot Key for the Control Button

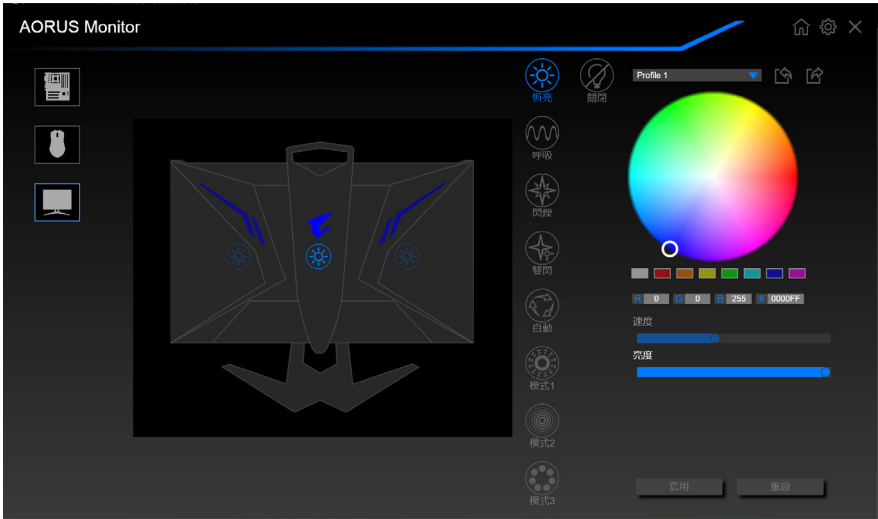
On the right panel (**QUICK SWITCH**), you can change the preset hot key function for the **Control** button.

Select the key position (◀◀/◀/▶/▶▶) and click the ▼ icon. Then select the desired option.



Configuring the LED Pattern

On the **RGB CONTROLLER**, click **SETTING**. The RGB FUSION software opens.

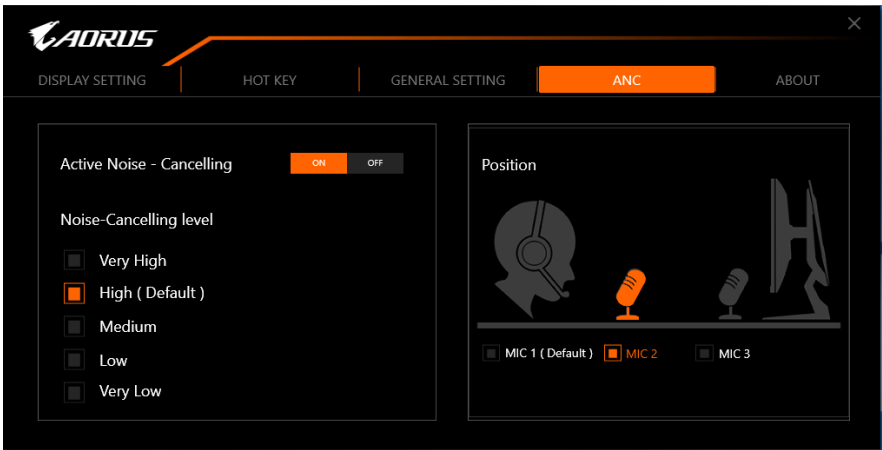


Select the desired LED color and adjust its respective **Speed** and **Brightness** settings.

Note: For more information, refer to the documentation that is included with the RGB FUSION software.

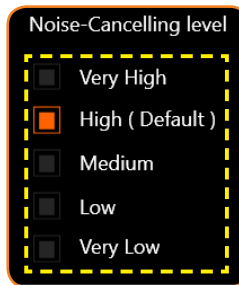
ANC

With the Active Noise-Cancelling (ANC) function, it helps to reduce the unwanted ambient sounds when you are using the headphones or microphones.



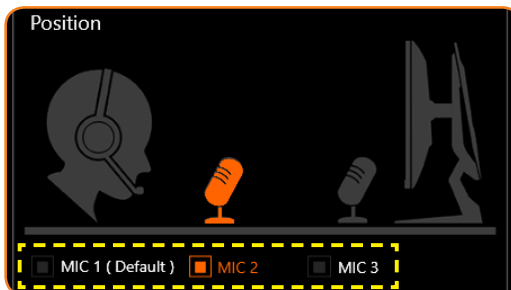
Configuring the Noise-Cancelling Setting

On the **Noise-Cancelling level** option, select the desired setting.



Specifying the Microphone Position

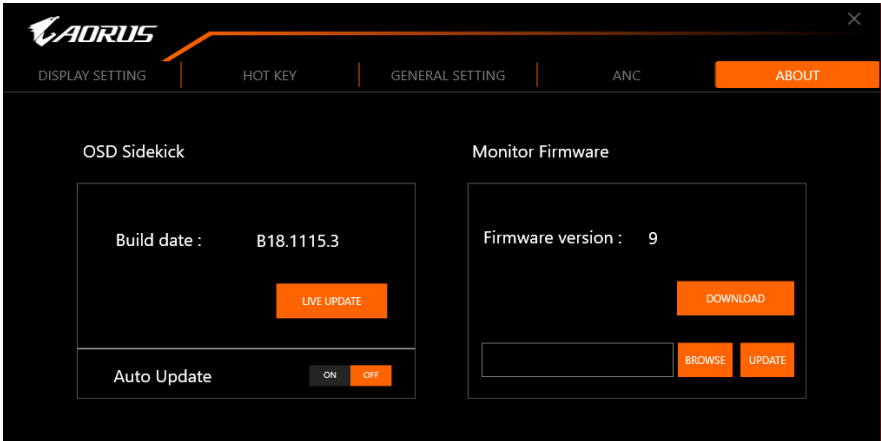
On the right panel (**Position**), set the microphone position based on its actual placement to ensure the best sound quality.



ABOUT

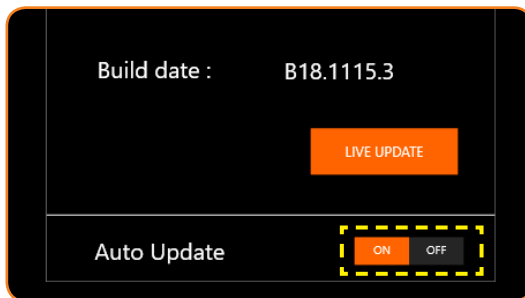
View the current firmware and software version and give you options to update the latest version.

IMPORTANT! During the firmware updating process, do not turn off the monitor. Any interruption may cause the device to malfunction.



Updating the Software Automatically

Click **LIVE UPDATE** to check and automatically update software when a new version is available.



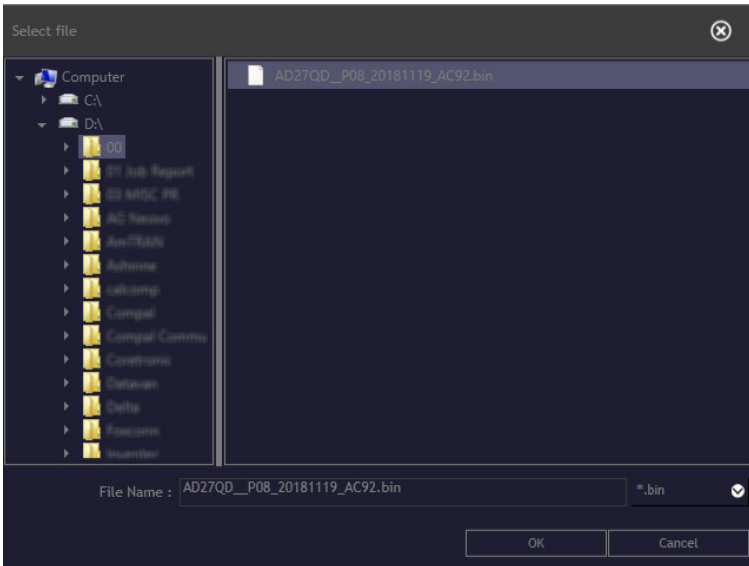
Set the **Auto Update** setting to **ON** to allow the system to check for software updates and display a message when a new update is available every time you open the app.

Note: Checking and updating software automatically requires Internet connection.

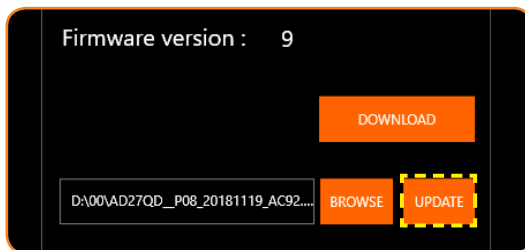
Updating the Firmware Manually

Note: Updating firmware manually does not require Internet connection.

1. Click **DOWNLOAD**. Then download the latest firmware from GIGABYTE web site and save the file on your computer.
2. Click **BROWSE**. Then select for the firmware file (*.bin) and click **OK**.



3. The firmware file is displayed on the field. Click **UPDATE** to update the firmware to the latest version.



4. Wait until the updating process is complete. Once the process is complete, a "Success" message appears on the screen. Then click **OK** to close the message window.

