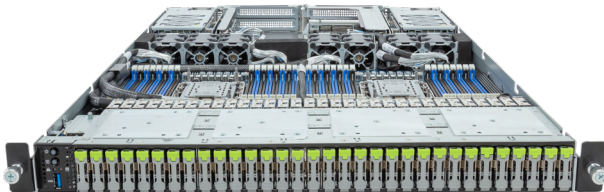


S183-SH0-AAJ1

1U DP 32-Bay Gen5 NVMe Server



Features

- 4th Gen Intel® Xeon® Scalable Processors
- Intel® Xeon® CPU Max Series
- Dual processors, LGA4677
- 8-Channel RDIMM DDR5 per processor, 32 x DIMMs
- Dual ROM Architecture supported
- 2 x 1Gb/s LAN ports
- 1 x Dedicated management port
- 32 x E1.S Gen5 NVMe hot-swappable bays
- 2 x M.2 slots with PCIe Gen3 x4 or SATA 3.0 interface
- 3 x FHHL PCIe Gen5 x16 and x8 slots
- Compatible with GRAID SupremeRAID NVMe/NVMe-oF RAID card
- Dual 2000W 80 PLUS Titanium redundant power supply

Specification

Dimensions	1U (W438 x H43.5 x D730 mm)	Front I/O	1 x USB 3.2 Gen1
Motherboard	MSH3-ES0	Rear I/O	2 x USB 3.2 Gen1, 1 x Mini-DP, 2 x RJ45, 1 x MLAN
CPU	4th Generation Intel® Xeon® Scalable Processors Intel® Xeon® CPU Max Series Intel® Xeon® Platinum Processor, Intel® Xeon® Gold Processor, Intel® Xeon® Silver Processor CPU TDP up to 350W	TPM	1 x TPM header with SPI interface (Optional TPM2.0 kit: CTM010)
Socket	2 x LGA 4677 (Socket E)	Power Supply	Dual 2000W 80 PLUS Titanium redundant power supply AC Input: 100-240V
Chipset	Intel® C741 Chipset	System Management	Aspeed® AST2600 management controller GIGABYTE Management Console (AMI MegaRAC SP-X)
Memory	8-Channel DDR5 memory per processor, 32 x DIMM slots RDIMM modules up to 128GB supported 3DS RDIMM modules up to 256GB supported Memory speed: Up to 4800 MHz (1DPC), 4400 MHz (2DPC)	OS Compatibility	Windows Server 2019 / 2022 RHEL 8.6 / 8.7 / 9.0 / 9.1 / 9.2 (x64) SLES 15 SP4 Ubuntu 22.04 LTS / 22.04.1 LTS / 22.04.2 LTS(x64) VMware ESXi 8.0 / 8.0 Update 1 Citrix Hypervisor 8.2 LTSR CU1
LAN	2 x 1Gb/s LAN ports (1 x Intel® I350-AM2) Supported NCSI function 1 x 10/100/1000 management LAN	System Fans	7 x 40x40x56mm (32,000rpm)
Video	Integrated in Aspeed AST2600 2D Video Graphic Adapter with PCIe bus interface 1920x1200@60Hz 32bpp, DDR4 SDRAM	Operating Properties	Operating temperature: 10°C to 35°C Operating humidity: 8-80% (non-condensing) Non-operating temperature: -40°C to 60°C Non-operating humidity: 20%-95% (non-condensing)
Storage	32 x 9.5mm E1.S Gen5 NVMe hot-swappable bays	Packaging Content	1 x S183-SH0 2 x CPU heatsinks 1 x Mini-DP to D-Sub cable 6 x Carrier clips 1 x Rail kit
RAID	Depends on optional add-on cards Compatible with GRAID SupremeRAID NVMe/NVMe-oF RAID card Support RAID 0/1/5/6/10	Reference Numbers	Barebone package: 6NS183SH0DR000AAJ1* - Motherboard: 9MSH3ES0UR-000 - Rail kit: 25HB2-3A0202-K0R - CPU heatsink: 25ST1-4Z3200-S7R - Power supply: 25EP0-21600E-L0S
Expansion Slots	1 x PCIe x16 (Gen5 x16) FHHL slot 1 x PCIe x16 (Gen5 x16 or x8) FHHL slot 1 x PCIe x16 (Gen5 x0 or x8) FHHL slot 2 x M.2 slots: M-key, PCIe Gen3 x4 or SATAIII, supports 2280/22110		



Learn more about GIGABYTE server, visit <https://www.gigacomputing.com>

* All specifications are subject to change without notice. Please visit our website for the latest information.
* Intel, the Intel logo, Xeon, and other Intel marks are trademarks of Intel Corporation or its subsidiaries.
* All other brands, logos and names are property of their respective owners.

© 2023 Giga Computing Technology Co., Ltd. All rights reserved.

Engineered by

