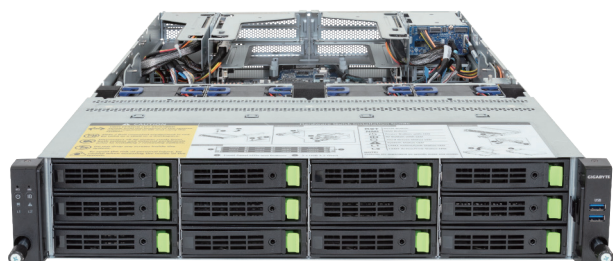


# R284-A90-AAL1

Rack Server - 2U DP 12+2-Bay NVMe/SATA



## Key Features

- Dual Intel® Xeon® 6 Processors, LGA 7529
- 12-Channel DDR5 RDIMM / MCR DIMM, 24 x DIMMs
- Dual ROM Architecture
- 2 x 1Gb/s LAN ports via Intel® I350-AM2
- 12 x 3.5"/2.5" Gen5 NVMe/SATA/SAS-4 hot-swap bays
- 2 x 2.5" SATA/SAS-4 hot-swap bays on the rear side
- 2 x M.2 slots with PCIe Gen5 x4 interface
- 2 x FHHL Dual-slot PCIe Gen5 x16 slots
- 2 x FHHL Single-slot PCIe Gen5 x16 slots
- 1 x LP PCIe Gen5 x16 slot
- 2 x OCP NIC 3.0 PCIe Gen5 x16 slots
- 2 x 2700W 80 PLUS Titanium redundant power supply

## Application

Networking, Hybrid/Private Cloud Server...

## Specification

<b>Dimensions</b>	2U (W438 x H87.5 x D815 mm)	<b>I/O Ports</b>	Front: 2 x USB 3.2 Gen1 Rear: 2 x USB 3.2 Gen1, 2 x RJ45, 1 x Mini-DP, 1 x MLAN
<b>Motherboard</b>	MA94-FS0	<b>Backplane Board</b>	Front - CBP20C7: PCIe Gen5 x4 or SATA 6Gb/s or SAS-4 24Gb/s Rear - CBP2025: SATA 6Gb/s or SAS-4 24Gb/s
<b>CPU</b>	Intel® Xeon® 6 Processors - Intel® Xeon® 6900-Series Processors Dual processor, TDP up to 500W	<b>Security Modules</b>	1 x TPM header with SPI interface - Optional TPM2.0 kit: CTM012 1 x PRoT module connector (only enabled on RoT SKU)
<b>Socket</b>	2 x LGA 7529 (Socket BR)	<b>Power Supply</b>	2 x 2700W 80 PLUS Titanium redundant power supply AC Input: 100-240V *The system power supply requires C19 power cord.
<b>Chipset</b>	System on Chip	<b>System Management</b>	ASPEED® AST2600 management controller GIGABYTE Management Console
<b>Memory</b>	12-Channel DDR5 RDIMM / MCR DIMM*, 24 x DIMM slots RDIMM: Up to 6400 MT/s; MCR DIMM: Up to 8000 MT/s *MCR DIMMs are only supported with Intel Xeon 6 CPU with P-cores.	<b>System Fans</b>	4 x 80x80x56mm (15,500rpm)
<b>LAN</b>	2 x 1Gb/s LAN (1 x Intel® I350-AM2) - Support NCSI function 1 x 10/100/1000 Mbps Management LAN	<b>Operating Properties</b>	Operating temperature: 10°C to 35°C Operating humidity: 8%-80% (non-condensing) Non-operating temperature: -40°C to 60°C Non-operating humidity: 20%-95% (non-condensing)
<b>Video</b>	Integrated in ASPEED® AST2600 - 1 x Mini-DP	<b>Packaging Content</b>	1 x R284-A90-AAL1, 2 x CPU heatsinks, 2 x Carrier, 1 x Mini-DP to D-Sub cable, 1 x 2-Section Rail kit
<b>Storage</b>	Front hot-swap: 12 x 3.5"/2.5" Gen5 NVMe/SATA/SAS-4* *Storage card is required to support SATA and SAS drives Rear hot-swap: 2 x 2.5" SATA/SAS-4* *SAS card is required to support SAS drives. Internal M.2: 2 x M.2 (2280/22110), PCIe Gen5 x4	<b>Part Numbers</b>	Barebone package: 6NR284A90DR000AAL1* Optional parts: - C19 power cord 125V/15A (US): 25CP1-018000-Q0R - C19 power cord 250V/16A (EU): 25CP3-01830H-Q0R - C19 power cord 125V/15A (JP): 25CPA-01830B-Q0R - 3-Section Rail kit (Supports CMA): 25HB2-A56121-K0R - Cable Management Arm: 25HB1-R18300-K0R
<b>RAID</b>	Require RAID add-in cards Onboard VROC key header		
<b>Expansion Slots</b>	2 x FHHL Dual-slot PCIe Gen5 x16 slots 2 x FHHL Single-slot PCIe Gen5 x16 slots 1 x LP PCIe Gen5 x16 slot 2 x OCP NIC 3.0 PCIe Gen5 x16 slots - Support NCSI function		



Learn more at <https://www.GIGABYTE.com/enterprise>

\* All specifications are subject to change without notice. Please visit our website for the latest information.  
\* Intel, the Intel logo, Xeon, and other Intel marks are trademarks of Intel Corporation or its subsidiaries.  
\* All other brands, logos and names are property of their respective owners.

© 2024 Giga Computing Technology Co., Ltd. All rights reserved.

Designed by

