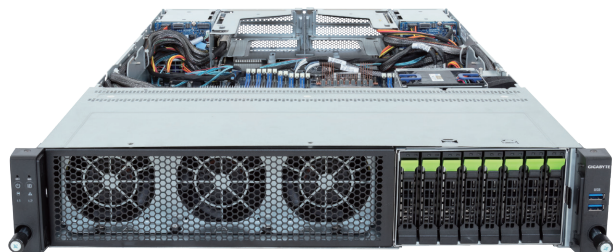


R283-ZK0-AAL1

Rack Server - 2U DP 8+4-Bay Gen5 NVMe/SATA



Features

- Dual AMD EPYC™ 9005/9004 Series Processors
- 12-Channel DDR5 RDIMM, 48 x DIMMs
- Dual ROM Architecture
- 2 x 1Gb/s LAN ports via Intel® I350-AM2
- 8 x 2.5" Gen5 NVMe hot-swappable bays
- 4 x 2.5" SATA/SAS-4 hot-swappable bays on the rear side
- 2 x M.2 slots with PCIe Gen3 x4 and x2 interface
- 4 x FHHL PCIe Gen5 x16 slots
- 2 x OCP 3.0 Gen5 x16 slots
- 1+1 2700W 80 PLUS Titanium redundant power supplies

Application

Networking, Hybrid/Private Cloud Server

Specification

Dimensions	2U (W438 x H87.5 x D815 mm)	Backplane Board	Speed and bandwidth: Front - CBP2081: PCIe Gen5 x4 or SATA 6Gb/s or SAS-4 24Gb/s Rear - CBP2025: PCIe Gen5 x4 or SATA 6Gb/s or SAS-4 24Gb/s
Motherboard	MZK3-LM0	TPM	1 x TPM header with SPI interface - Optional TPM2.0 kit: CTM012
CPU	AMD EPYC™ 9005 Series Processors AMD EPYC™ 9004 Series Processors Dual processor, cTDP up to 500W	Power Supply	1+1 2700W 80 PLUS Titanium redundant power supplies AC Input: 100-240V *The system power supply requires C19 power cord.
Socket	2 x LGA 6096 (Socket SP5)	System Management	ASPEED® AST2600 Baseboard Management Controller GIGABYTE Management Console web interface
Chipset	System on Chip	OS Support	Windows Server, Red Hat Enterprise Linux server, Ubuntu, SUSE Linux Enterprise server, VMware ESXi, Citrix Hypervisor
Memory	12-Channel DDR5 RDIMM, 48 x DIMMs [EPYC 9005] RDIMM: Up to 5200 MT/s (1DPC), 4400 MT/s (1R 2DPC), 4000 MT/s (2R 2DPC) [EPYC 9004] RDIMM: Up to 4800 MT/s (1DPC), 3600 MT/s (2DPC)	System Fans	4 x 80x80x80mm (13,000rpm)
LAN	2 x 1Gb/s LAN ports (1 x Intel® I350-AM2) - Support NCSI function 1 x 10/100/1000 management LAN	Operating Properties	Operating temperature: 10°C to 35°C Operating humidity: 8-80% (non-condensing) Non-operating temperature: -40°C to 60°C Non-operating humidity: 20%-95% (non-condensing)
Video	Integrated in ASPEED® AST2600 - 1 x Mini-DP	Packaging Content	1 x R283-ZK0-AAL1, 2 x CPU heatsinks 1 x Mini-DP to D-Sub cable, 1 x 2-Section Rail kit Packaging Dimensions: 1077 x 679 x 300 mm
Storage	Front: 8 x 2.5" Gen5 NVMe/SATA/SAS-4 hot-swap bays *Storage card is required to support SATA and SAS drives. Rear: 4 x 2.5" SATA/SAS-4 hot-swap bays *SAS card is required to support SAS drives. 1 x M.2 (2280/22110), PCIe Gen3 x4, 1 x M.2 (2280/22110), PCIe Gen3 x2	Part Numbers	Barebone package (EPYC 9005/9004): 6NR283ZK0DR000ACL1* Barebone package (EPYC 9004): 6NR283ZK0DR000AAL1* Optional parts: - 3-Section Rail kit (Supports CMA): 25HB2-A56121-K0R - Cable Management Arm: 25HB1-R18300-K0R
Expansion Slots	4 x FHHL PCIe Gen5 x16 slots 2 x OCP 3.0 Gen5 x16 slots - Support NCSI function		
I/O ports	Front: 2 x USB 3.2 Gen1 Rear: 2 x USB 3.2 Gen1, 1 x Mini-DP, 2 x RJ45, 1 x MLAN		



Learn more at <https://www.GIGABYTE.com/enterprise>

Designed by



* All specifications are subject to change without notice. Please visit our website for the latest information.
* AMD, the AMD Arrow logo, EPYC and combinations thereof are trademarks of Advanced Micro Devices, Inc.
* All other brands, logos and names are property of their respective owners.

© 2024 Giga Computing Technology Co., Ltd. All rights reserved.