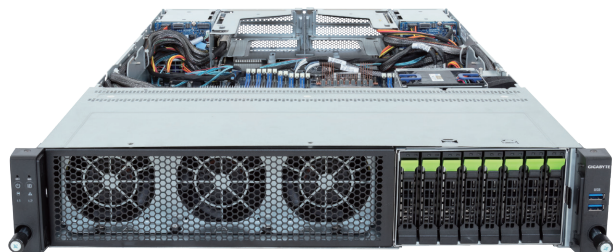


R283-ZK0-AAL1

Rack Server - 2U DP 8+4-Bay Gen5 NVMe/SATA



Features

- Dual AMD EPYC™ 9004 Series Processors (with AMD 3D V-Cache™ Technology)
- Ready for select 5th Generation AMD EPYC™ Processors
- 12-Channel DDR5 RDIMM, 48 x DIMMs
- Dual ROM Architecture
- 2 x 1Gb/s LAN ports via Intel® I350-AM2
- 8 x 2.5" Gen5 NVMe hot-swappable bays
- 4 x 2.5" SATA/SAS-4 hot-swappable bays on the rear side
- 2 x M.2 slots with PCIe Gen3 x4 and x2 interface
- 4 x FHHL PCIe Gen5 x16 slots
- 2 x OCP 3.0 Gen5 x16 slots
- 1+1 2700W 80 PLUS Titanium redundant power supplies

Specification

| | | | |
|------------------------|---|-----------------------------|--|
| Dimensions | 2U (W438 x H87.5 x D815 mm) | TPM | 1 x TPM header with SPI interface (Optional TPM2.0 kit: CTM010) |
| Motherboard | MZK3-LM0 | Power Supply | 1+1 2700W 80 PLUS Titanium redundant power supplies AC Input: 100-240V *The system power supply requires C19 power cord. |
| CPU | AMD EPYC™ 9004 series processor AMD EPYC™ 9004 series processors with AMD 3D V-Cache™ Dual processor, 5nm technology (LGA 6096 Socket SP5) Ready for select 5th Generation AMD EPYC™ Processors | System Management | ASPEED® AST2600 management controller GIGABYTE Management Console (AMI MegaRAC SP-X) |
| Chipset | System on Chip | OS Compatibility | Windows Server 2019 / 2022 RHEL 8.6 / 8.7 / 8.8 / 9.0 / 9.1 / 9.2 / 9.3 / 9.4 SLES 15 SP4 / 15 SP5 / 15 SP6 Ubuntu 22.04 / 22.04.1 / 22.04.2 / 22.04.3 / 22.04.4 / 24.04 LTS VMware ESXi 7.0 Update 3i / 8.0 Update 1, Update 2, Update 3 Citrix Hypervisor r 8.2 LTSR CU1 |
| Memory | 48 x DIMM slots, 12-Channel DDR5 memory RDIMM modules up to 96GB; 3DS RDIMM modules up to 256GB Memory speed: Up to 4800 MT/s (1DPC), 3600 MT/s (2DPC) | System Fans | 4 x 80x80x80mm (13,000rpm) |
| LAN | 2 x 1Gb/s LAN ports (1 x Intel® I350-AM2) - Support NCSI function 1 x 10/100/1000 management LAN | Operating Properties | Operating temperature: 10°C to 35°C Operating humidity: 8-80% (non-condensing) Non-operating temperature: -40°C to 60°C Non-operating humidity: 20%-95% (non-condensing) |
| Video | Integrated in ASPEED® AST2600 - 1 x Mini-DP | Packaging Content | 1 x R283-ZK0-AAL1, 2 x CPU heatsinks 1 x Mini-DP to D-Sub cable, 1 x 2-Section Rail kit Packaging Dimensions: 1077 x 679 x 300 mm |
| Storage | Rear: 8 x 2.5" Gen5 NVMe/SATA/SAS-4 hot-swappable bays *SATA/SAS support requires add-in cards. Rear: 4 x 2.5" SATA/SAS-4 hot-swappable bays *SAS card is required for SAS devices support 1 x M.2 slot (PCIe Gen3 x4, M-key, supports 2280/22110 cards) 1 x M.2 slot (PCIe Gen3 x2, M-key, supports 2280/22110 cards) | Part Numbers | Barebone package: 6NR283ZK0DR000AAL1* - 2-Section Rail kit (CMA not supported): 25HB2-3A0206-K0R - CPU heatsink: 25ST1-563400-C1R - Mini-DP to D-Sub cable: 25CRN-200801-K1R - Power supply: 25EPO-227000-D0S - 3-Section Rail kit (Supports CMA): 25HB2-A56121-K0R (Optional) - Cable Management Arm: 25HB1-R18300-K0R (Optional) |
| Expansion Slots | 4 x FHHL PCIe Gen5 x16 slots 2 x OCP 3.0 Gen5 x16 slots - Support NCSI function | | |
| I/O ports | Front: 2 x USB 3.2 Gen1 Rear: 2 x USB 3.2 Gen1, 1 x Mini-DP, 2 x RJ45, 1 x MLAN | | |
| Backplane Board | Front - CBP2081: PCIe Gen5 x4 or SATA 6Gb/s or SAS-4 24Gb/s Rear - CBP2025: PCIe Gen5 x4 or SATA 6Gb/s or SAS-4 24Gb/s | | |



Learn more at <https://www.GIGABYTE.com/enterprise>

Designed by



* All specifications are subject to change without notice. Please visit our website for the latest information.
* AMD, the AMD Arrow logo, EPYC and combinations thereof are trademarks of Advanced Micro Devices, Inc.
* All other brands, logos and names are property of their respective owners.

© 2024 Giga Computing Technology Co., Ltd. All rights reserved.