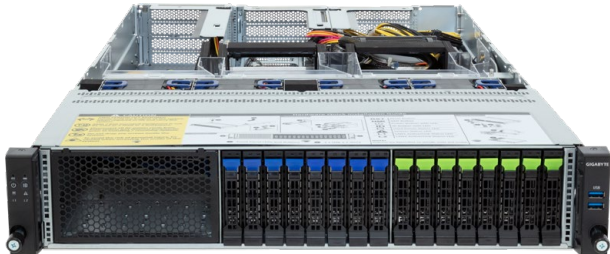


# R283-ZF1-AAL1

Rack Server - 2U DP 4-GPU 16-Bay NVMe/SATA



## Features

- Supports up to 4 x Dual slot Gen5 GPU cards
- Dual AMD EPYC™ 9004 Series processors
- 12-Channel RDIMM DDR5, 24 x DIMMs
- Dual ROM Architecture
- 1 x Dedicated management port
- 4 x 2.5" Gen5 NVMe/SATA/SAS4 hot-swappable bays
- 4 x 2.5" Gen5 NVMe hot-swappable bays
- 8 x 2.5" SATA/SAS4 hot-swappable bays
- 4 x FHFL PCIe Gen5 x16 slots for GPUs
- 1 x FHHL PCIe Gen5 x16 slot
- 1 x OCP 3.0 Gen5 x16 slot
- Dual 2700W 80 PLUS Titanium redundant power supply

## Specification

<b>Dimensions</b>	2U (W438 x H87.5 x D815 mm)	<b>Backplane I/O</b>	PCIe Gen5 x4 or SATA 6Gb/s or SAS4 24Gb/s
<b>Motherboard</b>	MZF3-GP0	<b>TPM</b>	1 x TPM header with SPI interface (Optional TPM2.0 kit: CTM010)
<b>CPU</b>	AMD EPYC™ 9004 series processor AMD EPYC™ 9004 series processors with AMD 3D V-Cache™ Dual processors, 5nm technology cTDP up to 300W at ambient 30°C 2 x LGA 6096 Socket SP5	<b>Power Supply</b>	Dual 2700W 80 PLUS Titanium redundant power supply AC Input: 100-240V
<b>Chipset</b>	System on Chip	<b>System Management</b>	Aspeed® AST2600 management controller GIGABYTE Management Console (AMI MegaRAC SP-X)
<b>Memory</b>	24 x DIMM slots, 12-Channel DDR5, up to 4800 MHz RDIMM modules up to 96GB supported 3DS RDIMM modules up to 256GB supported	<b>OS Compatibility</b>	Windows Server 2019 / 2022 RHEL 8.6 / 8.7 / 8.8 / 9.0 / 9.1 / 9.2 (x64) SLES 15 SP4 / 15 SP5 Ubuntu 20.04.6 / 22.04 / 22.04.1 / 22.04.2 / 22.04.3 LTS (x64) VMware ESXi 7.0 Update 3i / 8.0 / 8.0 Update 1 Citrix Hypervisor r 8.2 LTSR CU1
<b>LAN</b>	1 x 10/100/1000 management LAN	<b>System Fans</b>	1 x 40x40x28mm (34,000rpm) 4 x 80x80x56mm (15,500rpm)
<b>Video</b>	Integrated in Aspeed AST2600 2D Video Graphic Adapter with PCIe bus interface 1920x1200@60Hz 32bpp, DDR4 SDRAM	<b>Operating Properties</b>	Operating temperature: 10°C to 30°C Operating humidity: 8-80% (non-condensing) Non-operating temperature: -40°C to 60°C Non-operating humidity: 20%-95% (non-condensing)
<b>Storage</b>	4 x 2.5" Gen5 NVMe/SATA/SAS4 hot-swappable bays 4 x 2.5" Gen5 NVMe hot-swappable bays 8 x 2.5" SATA/SAS4 hot-swappable bays SAS card is required for SAS devices support	<b>Packaging Content</b>	1 x R283-ZF1, 2 x CPU heatsinks, 1 x Mini-DP to D-Sub cable, 1 x 2-Section Rail kit
<b>Expansion Slots</b>	4 x FHFL PCIe Gen5 x16 slots for GPUs 1 x FHHL PCIe Gen5 x16 slot 1 x OCP 3.0 Gen5 x16 slot	<b>Reference Numbers</b>	Barebone package: 6NR283ZF1DR000AAL1* - Motherboard: 9MZF3GP0UR-000 - 2-Section Rail kit (CMA not supported): 25HB2-3A0206-K0R - CPU heatsink: 25ST1-4Z3200-S7R - Mini-DP to D-Sub cable: 25CRN-200801-K1R - Power supply: 25EP0-227000-DO5
<b>Front I/O</b>	2 x USB 3.2 Gen1		
<b>Rear I/O</b>	2 x USB 3.2 Gen1, 1 x Mini-DP, 1 x MLAN		



Learn more about GIGABYTE server, visit [www.gigabyte.com/Enterprise](http://www.gigabyte.com/Enterprise)

\* All specifications are subject to change without notice. Please visit our website for the latest information.  
\* AMD, the AMD Arrow logo, EPYC and combinations thereof are trademarks of Advanced Micro Devices, Inc.  
\* All other brands, logos and names are property of their respective owners.

© 2023 Giga Computing Technology Co., Ltd. All rights reserved.

Engineered by

