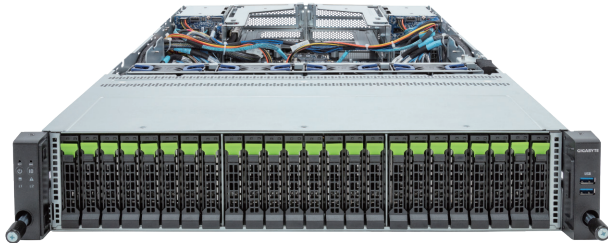


R283-Z96-AAJ1

Rack Server - 2U DP 24+4-Bay NVMe/SATA



Key Features

- Dual AMD EPYC™ 9005/9004 Series Processors
- 12-Channel DDR5 RDIMM, 24 x DIMMs
- Dual ROM Architecture
- 2 x 1Gb/s LAN ports via Intel® I350-AM2
- 24 x 2.5" Gen5 NVMe hot-swap bays
- 4 x 2.5" SATA/SAS-4 hot-swap bays on the rear side
- 2 x M.2 slots with PCIe Gen3 x4 and x2 interface
- 1 x FHHL PCIe Gen5 x16 slot
- 1 x OCP NIC 3.0 PCIe Gen5 x16 slot
- Compatible with SupremeRAID™ by Graid Technology
- Dual 2000W 80 PLUS Titanium redundant power supply

Application

Networking, Hybrid/Private Cloud Server...

Specification

Dimensions 2U (W438 x H87.5 x D815 mm)

Motherboard MZ93-FS1

CPU AMD EPYC™ 9005 Series Processors
AMD EPYC™ 9004 Series Processors
Dual processors, cTDP up to 400W
- cTDP up to 500W with optional heatsink

Socket 2 x LGA 6096 (Socket SP5)

Chipset System on Chip

Memory 12-Channel DDR5 RDIMM, 24 x DIMMs
[EPYC 9005] Up to 6000 MT/s
[EPYC 9004] Up to 4800 MT/s

LAN 2 x 1Gb/s LAN (1 x Intel® I350-AM2) - Supports NCSI function
1 x 10/100/1000 Mbps Management LAN

Video Integrated in ASPEED® AST2600 - 1 x Mini-DP

Storage Front hot-swap: 24 x 2.5" Gen5 NVMe
Rear hot-swap: 4 x 2.5" SATA/SAS-4
*SAS card is required to support SAS drives.
Internal M.2:
1 x M.2 (2280/22110), PCIe Gen3 x4
1 x M.2 (2280/22110), PCIe Gen3 x2

RAID Require RAID add-in cards
Optional compatible RAID Cards: GRAID SupremeRAID™
SR-1000-FD32, SR-1010-FD32 NVMe/NVMe-oF RAID Cards
Support RAID 0/1/5/6/10

Expansion Slots 1 x FHHL PCIe Gen5 x16 slot
1 x OCP NIC 3.0 PCIe Gen5 x16 slot - Supports NCSI function

I/O Ports Front: 2 x USB 3.2 Gen1
Rear: 2 x USB 3.2 Gen1, 1 x Mini-DP, 2 x RJ45, 1 x MLAN

Backplane Board Front - CBP2081 & CBP20G: PCIe Gen5 x4
Rear - CBP2025: SATA 6Gb/s or SAS-4 24Gb/s

Security Modules 1 x TPM header with SPI interface
- Optional TPM2.0 kit: CTM010

Power Supply Dual 2000W 80 PLUS Titanium redundant power supply
AC Input: 100-240V

System Management ASPEED® AST2600 Baseboard Management Controller
GIGABYTE Management Console web interface

OS Support Windows Server, Red Hat Enterprise Linux server, Ubuntu,
SUSE Linux Enterprise server, VMware ESXi, Citrix Hypervisor

System Fans 4 x 80x80x38mm (18,300rpm)

Operating Properties Operating temperature: 10°C to 35°C
Operating humidity: 8%-80% (non-condensing)
Non-operating temperature: -40°C to 60°C
Non-operating humidity: 20%-95% (non-condensing)

Packaging Content 1 x R283-Z96-AAJ1, 2 x CPU heatsinks,
1 x Mini-DP to D-Sub cable, 1 x 2-Section Rail kit
Packaging Dimensions: 1077 x 679 x 300 mm

Part Numbers Barebone package: 6NR283Z96DR000ACJ1*
Optional parts:
- RAID card (SR-1000-FD32): 25FC1-SRBUN0-AFS
- RAID card (SR-1010-FD32): 25FC1-SRBUN4-AFR
- 3-Section Rail kit (Supports CMA): 25HB2-A56121-K0R
- Cable Management Arm: 25HB1-R18300-K0R
- CPU heatsink (500W): 25ST1-563400-C1R
- RMA packaging: 6NR283Z96SR-RMA-A100



Learn more at <https://www.GIGABYTE.com/enterprise>

* All specifications are subject to change without notice. Please visit our website for the latest information.
* AMD, the AMD Arrow logo, EPYC and combinations thereof are trademarks of Advanced Micro Devices, Inc.
* All other brands, logos and names are property of their respective owners.

© 2024 Giga Computing Technology Co., Ltd. All rights reserved.

Designed by

