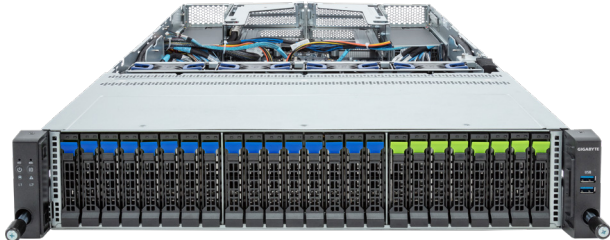


R283-Z96-AAE3

Rack Server - 2U DP 24-Bay Gen5 NVMe/SATA



Features

- AMD EPYC™ 9004 series processor family
- Dual processors, 5nm technology
- 12-Channel RDIMM DDR5, 24 x DIMMs
- Dual ROM Architecture supported
- 2 x 1Gb/s LAN ports
- 1 x dedicated management port
- 8 x 2.5" Gen5 NVMe hot-swappable bays
- 16 x 2.5" SATA/SAS4 hot-swappable bays
- 3 x M.2 slots with PCIe Gen3 x4 and x2 interface
- 3 x FHHL PCIe Gen5 x16 slots
- 2 x OCP 3.0 Gen5 x16 slots
- 1+1 2000W 80 PLUS Platinum redundant power supplies

Specification

Dimensions	2U (W438 x H87.5 x D815 mm)	Backplane I/O	PCIe Gen5 x4 or SATA 6Gb/s or SAS4 24Gb/s
Motherboard	MZ93-FS1	TPM	1 x TPM header with SPI interface Optional TPM2.0 kit: CTM010
CPU	AMD EPYC™ 9004 series processors AMD EPYC™ 9004 series processors with AMD 3D V-Cache™ Dual processors, 5nm technology cTDP up to 300W at ambient 35°C 2 x LGA 6096 (Socket SP5)	Power Supply	1+1 2000W 80 PLUS Platinum redundant power supply AC Input: 100-240V
Chipset	System on Chip	System Management	Aspeed® AST2600 management controller GIGABYTE Management Console (AMI MegaRAC SP-X)
Memory	24 x DIMM slots 12-Channel DDR5 memory, up to 4800 MHz RDIMM modules up to 96GB supported 3DS RDIMM modules up to 256GB supported	OS Compatibility	Windows Server 2019 / 2022 RHEL 8.4 / 8.5 / 8.6 / 8.7 / 9 / 9.1 (x64) SLES 15 SP3 / 15 SP3 SP4 (x64) Ubuntu 22.04 LTS / 22.04.1 LTS (x64) VMware ESXi 7.0 Update 3i / ESXi 8.0 Citrix Hypervisor 8.2.1
LAN	2 x 1GbE LAN ports (ntel I350-AM2) - Supported NCSI function 1 x 10/100/1000 management LAN	System Fans	4 x 80x80x38mm (18,300rpm)
Video	Integrated in Aspeed AST2600 2D Video Graphic Adapter with PCIe bus interface 1920x1200@60Hz 32bpp, DDR4 SDRAM	Operating Properties	Operating temperature: 10°C to 35°C Operating humidity: 8-80% (non-condensing) Non-operating temperature: -40°C to 60°C Non-operating humidity: 20%-95% (non-condensing)
Storage	8 x 2.5" Gen5 NVMe hot-swappable bays 16 x 2.5" SATA/SAS4 hot-swappable bays SAS card is required for SAS devices support	Packaging Content	1 x R283-Z96 2 x CPU heatsinks 1 x Mini-DP to D-Sub cable 1 x 2-Section Rail kit
Expansion Slots4	3 x FHHL PCIe Gen5 x16 slots 2 x OCP 3.0 Gen5 x16 slots (supports NCSI function) 2 x M.2 slots (M-key, PCIe Gen3 x4, supports 2280/22110 cards) 1 x M.2 slot (M-key, PCIe Gen3 x2, supports 2280/22110 cards)	Part Numbers	Barebone package: 6NR283Z96DR000AAE3* - Motherboard: 9MZ93FS1UR-000 - 2-Section Rail kit (CMA not supported): 25HB2-3A0206-K0R - CPU heatsink: 25ST1-15320G-A0R - Mini-DP to D-Sub cable: 25CRN-200801-K1R - Power supply: 25EP0-22000A-L0S
Front I/O	2 x USB 3.2 Gen1		
Rear I/O	2 x USB 3.2 Gen1, 1 x Mini-DP, 2 x RJ45, 1 x MLAN		



Learn more about GIGABYTE server, visit <https://www.gigacomputing.com>

- * All specifications are subject to change without notice. Please visit our website for the latest information.
- * AMD, the AMD Arrow logo, EPYC and combinations thereof are trademarks of Advanced Micro Devices, Inc.
- * All other brands, logos and names are property of their respective owners.

© 2023 Giga Computing Technology Co., Ltd. All rights reserved.

Engineered by

