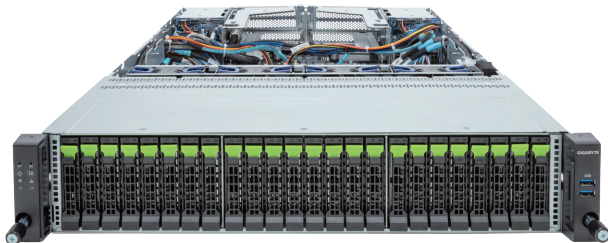


# R283-Z96-AAE1

Rack Server - 2U DP 24+4-Bay NVMe/SATA



## Key Features

- Dual AMD EPYC™ 9004 Series Processors
- 12-Channel DDR5 RDIMM, 24 x DIMMs
- Dual ROM Architecture
- 2 x 1Gb/s LAN ports via Intel® I350-AM2
- 24 x 2.5" Gen5 NVMe hot-swap bays
- 4 x 2.5" SATA/SAS-4 hot-swap bays on the rear side
- 2 x M.2 slots with PCIe Gen3 x4 and x2 interface
- 1 x FHHL PCIe Gen5 x16 slot
- 1 x OCP NIC 3.0 PCIe Gen5 x16 slot
- Compatible with SupremeRAID™ by Graid Technology
- 1+1 2000W 80 PLUS Platinum redundant power supply

## Application

Networking, Hybrid/Private Cloud Server...

## Specification

**Dimensions** 2U (W438 x H87.5 x D815 mm)

**Motherboard** MZ93-FS1

**CPU** AMD EPYC™ 9005 Series Processors  
AMD EPYC™ 9004 Series Processors  
Dual processors, cTDP up to 300W  
- EPYC 9654 cTDP up to 400W

**Sock** 2 x LGA 6096 (Socket SP5)

**Chipset** System on Chip

**Memory** 24 x DIMM slots  
12-Channel DDR5 RDIMM  
Up to 4800 MT/s

**LAN** 2 x 1Gb/s LAN (1 x Intel® I350-AM2) - Supports NCSI function  
1 x 10/100/1000 Mbps Management LAN

**Video** Integrated in ASPEED® AST2600 - 1 x Mini-DP

**Storage** Front hot-swap: 24 x 2.5" Gen5 NVMe  
Rear hot-swap: 4 x 2.5" SATA/SAS-4  
\*SAS card is required to support SAS drives.  
Internal M.2:  
1 x M.2 (2280/22110), PCIe Gen3 x4  
1 x M.2 (2280/22110), PCIe Gen3 x2

**RAID** Require RAID add-in cards  
Optional compatible RAID Cards: GRAID SupremeRAID™  
SR-1000-FD32, SR-1010-FD32 NVMe/NVMe-oF RAID Cards  
Support RAID 0/1/5/6/10

**Expansion Slots** 1 x FHHL PCIe Gen5 x16 slot  
1 x OCP NIC 3.0 PCIe Gen5 x16 slot - Supports NCSI function

**I/O Ports** Front: 2 x USB 3.2 Gen1  
Rear: 2 x USB 3.2 Gen1, 1 x Mini-DP, 2 x RJ45, 1 x MLAN

**Backplane Board** Front - CBP2081 & CBP20G: PCIe Gen5 x4  
Rear - CBP2025: SATA 6Gb/s or SAS-4 24Gb/s

**Security Modules** 1 x TPM header with SPI interface  
- Optional TPM2.0 kit: CTM010

**Power Supply** Dual 2000W 80 PLUS Platinum redundant power supply  
AC Input: 100-240V

**System Management** ASPEED® AST2600 Baseboard Management Controller  
GIGABYTE Management Console web interface

**OS Support** Windows Server, Red Hat Enterprise Linux server, Ubuntu,  
SUSE Linux Enterprise server, VMware ESXi, Citrix Hypervisor

**System Fans** 4 x 80x80x38mm (18,300rpm)

**Operating Properties** Operating temperature: 10°C to 35°C  
Operating humidity: 8%-80% (non-condensing)  
Non-operating temperature: -40°C to 60°C  
Non-operating humidity: 20%-95% (non-condensing)

**Packaging Content** 1 x R283-Z96-AAE1, 2 x CPU heatsinks,  
1 x Mini-DP to D-Sub cable, 1 x 2-Section Rail kit  
Packaging Dimensions: 1077 x 679 x 300 mm

**Part Numbers** Barebone package (EPYC 9005/9004): 6NR283Z96DR000ABE1\*  
Barebone package (EPYC 9004): 6NR283Z96DR000AAE1\*  
Optional parts:  
- RAID card (SR-1000-FD32): 25FC1-SRBUN0-AFS  
- RAID card (SR-1010-FD32): 25FC1-SRBUN4-AFR  
- 3-Section Rail kit (Supports CMA): 25HB2-A56121-K0R  
- Cable Management Arm: 25HB1-R18300-K0R  
- RMA packaging: 6NR283Z96SR-RMA-A100



Learn more at <https://www.GIGABYTE.com/enterprise>

\* All specifications are subject to change without notice. Please visit our website for the latest information.  
\* AMD, the AMD Arrow logo, EPYC and combinations thereof are trademarks of Advanced Micro Devices, Inc.  
\* All other brands, logos and names are property of their respective owners.

© 2024 Giga Computing Technology Co., Ltd. All rights reserved.

Designed by

