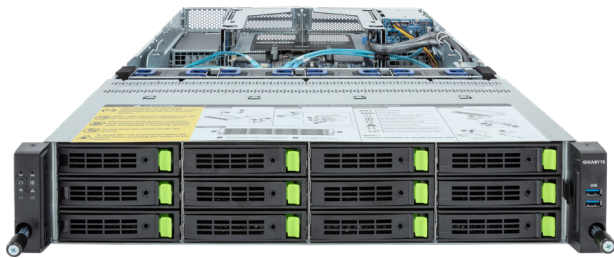


# R283-S94-AAV1

## 2U DP 12+2-Bay NVMe/SATA/SAS Rack Server



### Features

- 5th/4th Gen Intel® Xeon® Scalable Processors
- Intel® Xeon® CPU Max Series
- Dual processor, LGA 4677
- 8-Channel RDIMM DDR5 per processor, 32 x DIMMs
- Dual ROM Architecture
- 2 x 1Gb/s LAN ports via Intel® I350-AM2
- 1 x Dedicated management port
- 12 x 3.5"/2.5" Gen4 NVMe/SATA/SAS hot-swappable bays
- 2 x 2.5" SATA/SAS hot-swappable bays on the rear side
- 4 x FHHL PCIe Gen5 x16 slots
- 2 x OCP 3.0 Gen5 x16 slots
- Dual 1600W 80 PLUS Titanium redundant power supply

### Specification

<b>Dimensions</b>	2U (W438 x H87.5 x D815 mm)	<b>Rear I/O</b>	2 x USB 3.2 Gen1, 1 x Mini-DP, 2 x RJ45, 1 x MLAN
<b>Motherboard</b>	MS93-FS1	<b>Backplane I/O</b>	PCIe Gen4 x4 or SATA 6Gb/s or SAS 12Gb/s on front side SATA 6Gb/s or SAS 12Gb/s on rear side
<b>CPU</b>	5th Generation Intel® Xeon® Scalable Processors 4th Generation Intel® Xeon® Scalable Processors Intel® Xeon® CPU Max Series Dual processor, TDP up to 350W	<b>TPM</b>	1 x TPM header with SPI interface (Optional TPM2.0 kit: CTM010)
<b>Socket</b>	2 x LGA 4677 (Socket E)	<b>Power Supply</b>	Dual 1600W 80 PLUS Titanium redundant power supply AC Input: 100-240V
<b>Chipset</b>	Intel® C741 Chipset	<b>System Management</b>	ASPEED® AST2600 management controller GIGABYTE Management Console (AMI MegaRAC SP-X)
<b>Memory</b>	8-Channel DDR5 memory per processor, 32 x DIMM slots RDIMM modules up to 128GB supported 3DS RDIMM modules up to 256GB supported Memory speed: Up to 5600 MHz (1DPC), 4400 MHz (2DPC)	<b>OS Compatibility</b>	Windows Server 2019 / 2022 RHEL 8.6 / 8.7 / 8.8 / 8.9 / 9.0 / 9.1 / 9.2 / 9.3 (x64) SLES 15 SP4 / SP5 (x64) Ubuntu 20.04.6 / 22.04 / 22.04.1 / 22.04.2 / 22.04.3 LTS (x64) VMware ESXi 7.0 Update 3i & 3o / 8.0 / 8.0 Update 1 & 2 Citrix Hypervisor 8.2 LTSR CU1
<b>LAN</b>	2 x 1Gb/s LAN ports (1 x Intel® I350-AM2) Supported NCSI function 1 x 10/100/1000 management LAN	<b>System Fans</b>	4 x 80x80x38mm (18,300rpm)
<b>Video</b>	Integrated in ASPEED AST2600 2D Video Graphic Adapter with PCIe bus interface 1920x1200@60Hz 32bpp, DDR4 SDRAM	<b>Operating Properties</b>	Operating temperature: 10°C to 35°C Operating humidity: 8-80% (non-condensing) Non-operating temperature: -40°C to 60°C Non-operating humidity: 20%-95% (non-condensing)
<b>Storage</b>	12 x 3.5/2.5" Gen4 NVMe/SATA/SAS hot-swappable bays 2 x 2.5" SATA/SAS hot-swappable bays on rear side SAS card is required for SAS devices support	<b>Packaging Content</b>	1 x R283-S94-AAV1, 2 x CPU heatsinks, 6 x Carrier clips, 1 x Mini-DP to D-Sub cable, 1 x 2-Section Rail kit
<b>RAID</b>	Intel® SATA RAID 0/1/10/5	<b>Part Numbers</b>	Barebone package (5th/4th Gen): 6NR283S94DR000ABV1* - Motherboard: 9AS93FS1UR-000 - 2-Section Rail kit (CMA not supported): 25HB2-3A0206-K0R - CPU heatsink: 25ST1-323208-A0R - Mini-DP to D-Sub cable: 25CRN-200801-K1R - Power supply: 25EPO-21600D-G1S
<b>Expansion Slots</b>	4 x PCIe Gen5 x16 FHHL slots 2 x OCP 3.0 Gen5 x16 slots - Supporte NCSI function		
<b>Front I/O</b>	2 x USB 3.2 Gen1		



Learn more about GIGABYTE server at <https://www.gigacomputing.com>

\* All specifications are subject to change without notice. Please visit our website for the latest information.  
\* Intel, the Intel logo, Xeon, and other Intel marks are trademarks of Intel Corporation or its subsidiaries.  
\* All other brands, logos and names are property of their respective owners.

© 2024 Giga Computing Technology Co., Ltd. All rights reserved.

Designed by

