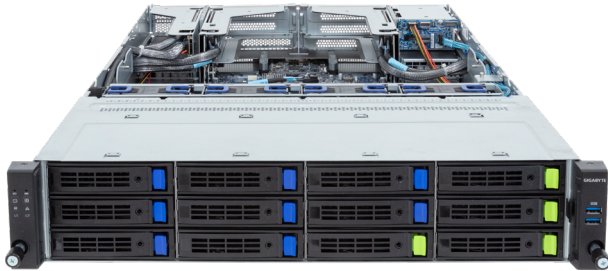


# R283-S90-AAJ1

Rack Server - 2U DP 12+2-Bay NVMe/SATA/SAS



## Key Features

- Dual 5th/4th Gen Intel® Xeon® Scalable Processors
- Dual Intel® Xeon® CPU Max Series
- 8-Channel RDIMM DDR5 per processor, 32 x DIMMs
- Dual ROM Architecture supported
- 2 x 1Gb/s LAN ports via Intel® I350-AM2
- 4 x 3.5"/2.5" Gen4 NVMe/SATA/SAS hot-swappable bays
- 8 x 3.5"/2.5" SATA/SAS hot-swappable bays
- 2 x 2.5" SATA/SAS hot-swappable bays on the rear side
- 6 x FHHL PCIe Gen5 x16 slots
- 2 x LP PCIe Gen5 x8 slots
- 2 x OCP 3.0 Gen5 x16 slots
- Compatible with SupremeRAID™ by Graid Technology
- 1+1 2000W 80 PLUS Titanium redundant power supplies

## Specification

<b>Dimensions</b>	2U (W438 x H87.5 x D815 mm)	<b>I/O Ports</b>	Front: 2 x USB 3.2 Gen1 Rear: 2 x USB 3.2 Gen1, 1 x Mini-DP, 2 x RJ45, 1 x MLAN
<b>Motherboard</b>	MS93-FS0	<b>Backplane Board</b>	PCIe Gen4 x4 or SATA 6Gb/s or SAS 12Gb/s on front side SATA 6Gb/s or SAS 12Gb/s on rear side
<b>CPU</b>	5th Generation Intel® Xeon® Scalable Processors 4th Generation Intel® Xeon® Scalable Processors Intel® Xeon® CPU Max Series Dual processor, TDP up to 350W	<b>TPM</b>	1 x TPM header with SPI interface (Optional TPM2.0 kit: CTM010)
<b>Socket</b>	2 x LGA 4677 (Socket E)	<b>Power Supply</b>	1+1 2000W 80 PLUS Titanium redundant power supplies AC Input: 100-240V
<b>Chipset</b>	Intel® C741 Chipset	<b>System Management</b>	ASPEED® AST2600 management controller GIGABYTE Management Console (AMI MegaRAC SP-X)
<b>Memory</b>	8-Channel DDR5 memory per processor, 32 x DIMM slots RDIMM up to 96GB supported 3DS RDIMM up to 256GB supported Memory speed: Up to 5600 MHz (1DPC), 4400 MHz (2DPC)	<b>OS Compatibility</b>	Windows Server 2019 / 2022 RHEL 8.6 / 8.7 / 8.8 / 8.9 / 9.0 / 9.1 / 9.2 / 9.3 ( x64) SLES 15 SP4 / 15 SP5 ( x64) Ubuntu 22.04 LTS / 22.04.1 / 22.04.2 / 22.04.3 LTS (x64) VMware ESXi 7.0 Update 3o / 8.0 Update 1 / 8.0 Update 2 Citrix Hypervisor 8.2 LTSR CU1
<b>LAN</b>	2 x 1Gb/s LAN ports (1 x Intel® I350-AM2) Supported NCSI function 1 x 10/100/1000 management LAN	<b>System Fans</b>	4 x 80x80x38mm (18,300rpm)
<b>Video</b>	ASPEED® AST2600 Integrated 2D Graphic Adapter	<b>Operating Properties</b>	Operating temperature: 10°C to 35°C Operating humidity: 8-80% (non-condensing) Non-operating temperature: -40°C to 60°C Non-operating humidity: 20%-95% (non-condensing)
<b>Storage</b>	4 x 3.5"/2.5" Gen4 NVMe/SATA/SAS hot-swappable bays 8 x 3.5"/2.5" SATA/SAS hot-swappable bays 2 x 2.5" SATA/SAS hot-swappable bays on rear side SAS card is required for SAS devices support	<b>Packaging Content</b>	1 x R283-S90-AAJ1, 2 x CPU heatsinks, 6 x Carrier clips, 1 x Mini-DP to D-Sub cable, 1 x -Section Rail kit
<b>RAID</b>	Intel® SATA RAID 0/1/10/5 Optional compatible RAID Cards: NVMe RAID Cards with SupremeRAID™ by Graid Technology RAID Card models: SR-1001-ED4, support RAID 0/1/5/6/10	<b>Part Numbers</b>	Barebone package (5th/4th Gen): 6NR283S90DR000ABJ1* Barebone package (4th Gen): 6NR283S90DR000AAJ1* - Motherboard: 9AS93FS0UR-000 - 2-Section Rail kit (CMA not supported): 25HB2-3A0206-K0R - CPU heatsink: 25ST1-323208-A0R - Mini-DP to D-Sub cable: 25CRN-200801-K1R - Power supply: 25EP0-22000J-G1S
<b>Expansion Slots</b>	6 x PCIe Gen5 x16 FHHL slots 2 x PCIe Gen5 x8 LP slots 2 x OCP 3.0 Gen5 x16 slots - Supporte NCSI function		



Learn more about GIGABYTE server at <https://www.gigabyte.com/Enterprise>

Designed by



\* All specifications are subject to change without notice. Please visit our website for the latest information.  
\* Intel, the Intel logo, Xeon, and other Intel marks are trademarks of Intel Corporation or its subsidiaries.  
\* All other brands, logos and names are property of their respective owners.

© 2023 Giga Computing Technology Co., Ltd. All rights reserved.