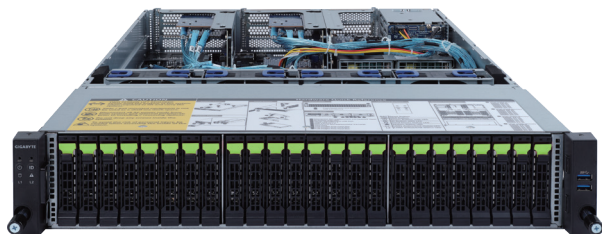


# R282-Z94

## Rack Server - 2U DP 26-Bay Gen4 NVMe



### Features

- Hardware-level root of trust support
- Dual AMD EPYC™ 7002 series processor family
- 8-Channel RDIMM/LRDIMM DDR4 per processor, 32 x DIMMs
- 2 x 1Gb/s LAN ports (Intel® I350-AM2)
- 1 x Dedicated management port
- 24 x 2.5" Gen4 U.2 hot-swappable SSD bays in front side
- 2 x 2.5" SATA/SAS hot-swappable HDD/SSD bays in rear side
- Ultra-Fast M.2 with PCIe Gen4 x4 interface
- 1 x PCIe Gen4 expansion slots
- 1600W 80 PLUS Platinum redundant power supply

### Specification

<b>Dimensions (WxHxD)</b>	2U 438 x 87x 730 mm	<b>Backplane I/O</b>	Front side_CBP2008: 24 x Gen4 U.2 ports Rear side_CBP2022: 2 x SATA/SAS ports Speed and bandwidth: SATA/ SAS/ PCIe Gen4 x4 per port
<b>Motherboard</b>	MZ92-FS1	<b>TPM</b>	1 x TPM header with SPI interface Optional TPM2.0 kit: CTM010
<b>CPU</b>	AMD EPYC™ 7002 series processor family Dual processor, 7nm technology TDP up to 225W, cTDP up to 240W Conditional support 280W Compatible with AMD EPYC™ 7001 series processor family	<b>Power Supply</b>	Dual 1600W 80 PLUS Platinum redundant power supply
<b>Chipset</b>	System on Chip	<b>System Management</b>	Aspeed® AST2500 management controller GIGABYTE Management Console (AMI MegaRAC SP-X)
<b>Memory</b>	32 x DIMM slots DDR4 memory supported only 8-Channel memory architecture RDIMM modules up to 128GB supported LRDIMM modules up to 128GB supported Memory speed: Up to 3200 / 2933 MHz	<b>OS Compatibility</b>	Windows Server 2016 / 2019 RHEL 7.6 (x64) / 8.0 (x64) or later SLES 12 SP4 ( x64) / 15 SP1 ( x64) or later Ubuntu 16.04.6 LTS (x64) / 18.04.3 LTS (x64) / 20.04 LTS (x64) VMware ESXi 6.5 EP15 / 6.7 Update3 or later Citrix Hypervisor 8.1.0 or later
<b>LAN</b>	2 x 1GbE LAN ports (1 x Intel® I350-AM2) 1 x 10/100/1000 management LAN	<b>Weight</b>	Net Weight: 18.5 kg / Gross Weight: 25.5 kg
<b>Video</b>	Integrated in Aspeed® AST2500 2D Video Graphic Adapter with PCIe bus interface 1920x1200@60Hz 32bpp	<b>System Fans</b>	4 x 80x80x38mm (16,300rpm)
<b>Storage</b>	Front side: 24 x 2.5" Gen4 U.2 hot-swappable HDD/SSD bays Rear side: 2 x 2.5" SATA/SAS hot-swappable HDD/SSD bays 1 x M.2 slot: - M-key, PCIe Gen4 x4 - Supports NGFF-2242/2260/2280/22110 cards	<b>Operating Properties</b>	Operating temperature: 10°C to 35°C Operating humidity: 8-80% (non-condensing) Non-operating temperature: -40°C to 60°C Non-operating humidity: 20%-95% (non-condensing)
<b>Expansion Slots</b>	1 x PCIe x16 slot (Gen4 x16), FHHL	<b>Packaging Content</b>	1 x R282-Z94, 2 x CPU heatsinks, 1 x Rail kit
<b>Internal I/O</b>	1 x M.2 slot, 1 x USB 3.0 header, 1 x COM header, 1 x TPM header, 1 x Front panel header, 1 x HDD back plane board header, 1 x PMBus connector, 1 x IPMB connector, 1 x Clear CMOS jumper, 1 x BIOS recovery jumper	<b>Reference Numbers</b>	Barebone package: 6NR282Z94MR-00 - Motherboard: 9MZ92FS1NR-00 - Rail kit: 25HB2-3A0202-K0R - CPU heatsink: 25ST1-15320E-J1R - Back plane board_24-port: 9CBP2008NR-00 - Back plane board_2-port: 9CBP2022NR-00 - PCIe pass through board: 9CEP2080NR-00 - Front panel board: 9CFP2001NR-00 - Fan module: 25ST2-883829-D0R - Power supply: 25EP0-216008-L0S - Riser card - CRS2014: 9CRS2014NR-00 - Riser card - CRS2033: 9CRS2033NR-00 - OCP 3.0 4-port Gne4 NVMe HBA: 9CNV9134NR-00 - OCP 2.0 2-port Gen4 NVMe HBA: 9CNV0132NR-00 - PCIe 4-port Gen4 NVMe HBA: 9CNV3134NR-00 - PCIe 2-port Gen4 NVMe HBA: 9CNV3132NR-00
<b>Front I/O</b>	2 x USB 3.0		
<b>Rear I/O</b>	2 x USB 3.0, 1 x VGA, 2 x RJ45, 1 x MLAN		

\* All specifications are subject to change without notice. Please visit our website for the latest information.

\* AMD, and the AMD Arrow logo, AMD EPYC, AMD Radeon Instinct and combinations thereof are trademarks of Advanced Micro Devices, Inc.

