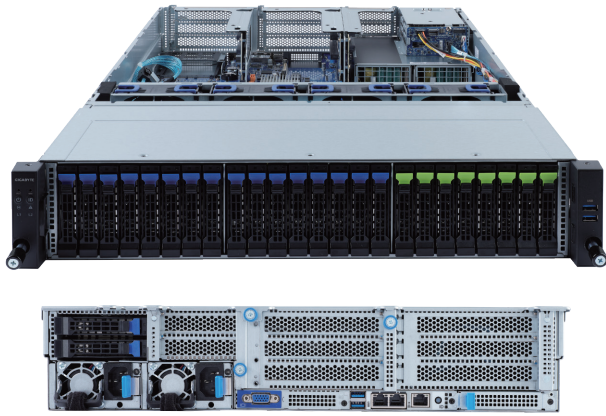


R282-N80

Rack Server - 2U DP 24+2-Bay NVMe/SATA/SAS



Features

- Dual 3rd Gen. Intel® Xeon® Scalable Processors
- 8-Channel RDIMM/LRDIMM DDR4 per processor, 32 x DIMMs
- Supports Intel® Optane™ Persistent Memory 200 series
- Dual ROM Architecture
- 2 x 1Gb/s LAN ports (Intel® I350-AM2)
- 8 x 2.5" Gen4 NVMe/SATA/SAS hot-swappable bays
- 16 x 2.5" SATA/SAS hot-swappable bays
- 2 x 2.5" SATA/SAS hot-swappable bays on rear side
- Onboard 12Gb/s SAS expander
- 6 x FHHL PCIe Gen4 x16 and x8 slots
- 2 x LP PCIe Gen4 x8 slots
- 1 x OCP 3.0 Gen4 x16 slot
- 1 x OCP 2.0 Gen3 x8 mezzanine slot
- 1+1 1600W 80 PLUS Platinum redundant power supplies

Specification

Dimensions	2U (W438 x H87.5 x D730 mm)	I/O Ports	Front: 2 x USB 3.0 Rear: 2 x USB 3.0, 1 x VGA, 2 x RJ45, 1 x MLAN Internal: 1 x TPM header, 1 x VROC connector
Motherboard	MR92-FS0	Backplane Board	Front - CBP2007: PCIe Gen4 x4 or SATA 6Gb/s or SAS 12Gb/s Rear - CBP2022: SATA 6Gb/s or SAS 12Gb/s
CPU	3rd Generation Intel® Xeon® Scalable Processors Dual processor, 10nm technology TDP up to 270W 2 x LGA 4189 sockets (Socket P+)	TPM	1 x TPM header with SPI interface Optional TPM2.0 kit: CTM010
Chipset	Intel® C621A Express Chipset	Power Supply	1+1 1600W 80 PLUS Platinum redundant power supplies (-100) 1+1 1600W 80 PLUS Titanium redundant power supplies (-1T0) AC Input: 100-240V
Memory	8-Channel DDR4 memory, 32 x DIMM slots RDIMM modules up to 128GB supported LRDIMM modules up to 128GB supported 3DS RDIMM/LRDIMM modules up to 256GB supported 1.2V modules: 3200/2933/2666 MHz	System Management	ASPEED® AST2500 management controller GIGABYTE Management Console (AMI MegaRAC SP-X)
LAN	2 x 1Gb/s LAN ports (1 x Intel® I350-AM2) - Support NCSI function 1 x 10/100/1000 management LAN	OS Compatibility	Windows Server, Red Hat Enterprise Linux, VMware ESXi, SUSE Linux Enterprise Server, Ubuntu, Citrix Hypervisor
Video	ASPEED® AST2500 Integrated 2D Graphic Adapter	System Fans	4 x 80x80x38mm (16,300rpm)
Storage	Front: 8 x 2.5" Gen4 NVMe/SATA/SAS hot-swappable bays 16 x 2.5" SATA/SAS hot-swappable bays Rear: 2 x 2.5" SATA/SAS hot-swappable bays SAS card is required to enable drive bays Broadcom SAS35x36R expander Default supports: 8 x 2.5" NVMe drives Suggested 12Gb/s SAS cards: CRA4448	Operating Properties	Operating temperature: 10°C to 35°C Operating humidity: 8-80% (non-condensing) Non-operating temperature: -40°C to 60°C Non-operating humidity: 20%-95% (non-condensing)
RAID	Depends on SAS add-on card	Packaging Content	1 x R282-N80, 2 x CPU heatsinks, 1 x 2-Section Rail kit Packaging Dimensions: 982 x 588 x 268 mm
Expansion Slots	1 x PCIe x16 slot (Gen4 x16), FHHL 2 x PCIe x16 slots (Gen4 x16 o x8), FHHL 2 x PCIe x8 slots (Gen4 x8), FHHL 1 x PCIe x8 slots (Gen4 x0 or x8), FHHL 2 x PCIe x8 slots (Gen4 x8), LP 1 x OCP 3.0 slot (Gen4 x16) - Supported NCSI function 1 x OCP 2.0 mezzanine slot (Gen3 x8) - Supported NCSI function	Part Numbers	Barebone package: 6NR282N80MR-00-1* - Motherboard: 9MR92FS0NR-00 - 2-Section Rail kit (CMA not supported): 25HB2-3A0202-K0R - CPU heatsink: 25ST1-343102-M1R - Power supply (-100): 25EP0-216008-L0S - Power supply (-1T0): 25EP0-21600E-L0S - VROC module: 25FD0-R181N0-10R (optional) - RMA packaging: 6NR2823C1SR-RMA-A100 (optional) - 3-Section Rail kit (Supports CMA): 25HB2-AA6105-K0R - Cable Management Arm: 25HB1-R18300-K0R



Learn more at <https://www.GIGABYTE.com/enterprise>

* All specifications are subject to change without notice. Please visit our website for the latest information.
* Intel, the Intel logo, Xeon, and other Intel marks are trademarks of Intel Corporation or its subsidiaries.
* All other brands, logos and names are property of their respective owners.

© 2024 Giga Computing Technology Co., Ltd. All rights reserved.

Designed by

