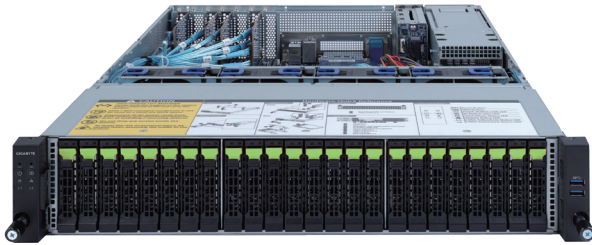


R272-Z34

Rack Server - 2U UP 26-Bay Gen4 NVMe



Features

- Hardware-level root of trust support
- Single AMD EPYC™ 7002 series processor family
- 8-Channel RDIMM/LRDIMM DDR4, 16 x DIMMs
- 2 x 1Gb/s LAN ports (Intel® I350-AM2)
- 1 x Dedicated management port
- 24 x 2.5" Gen4 U.2 hot-swappable SSD bays in front side
- 2 x 2.5" SATA/SAS hot-swappable HDD/SSD bays in rear side
- Ultra-Fast M.2 with PCIe Gen4 x4 interface
- 1 x PCIe Gen4 x8 expansion slot
- 1200W 80 PLUS Platinum redundant power supply

Specification

Dimensions (WxHxD)	2U 438 x 87.5 x 660 mm	Backplane I/O	Front side_CBP2008: 24 x Gen4 U.2 ports Rear side_CBP2023: 2 x SATA/SAS ports Speed and bandwidth: SATA/ SAS/ PCIe Gen4 x4 per port
Motherboard	MZ32-AR1	TPM	1 x TPM header with SPI interface Optional TPM2.0 kit: CTM010
CPU	AMD EPYC™ 7002 series processor family Single processor, 7nm technology TDP up to 225W, cTDP up to 240W Conditional support 280W Compatible with AMD EPYC™ 7001 series processor family	Power Supply	Dual 1100W 80 PLUS Platinum redundant power supply
Chipset	System on Chip	System Management	Aspeed® AST2500 management controller GIGABYTE Management Console (AMI MegaRAC SP-X)
Memory	16 x DIMM slots DDR4 memory supported only 8-Channel memory architecture RDIMM modules up to 128GB supported LRDIMM modules up to 128GB supported Memory speed: Up to 3200*/ 2933 MHz	OS Compatibility	Windows Server 2016 / 2019 RHEL 7.6 (x64) / 8.0 (x64) or later SLES 12 SP4 (x64) / 15 SP1 (x64) or later Ubuntu 16.04.6 LTS (x64) / 18.04.3 LTS (x64) / 20.04 LTS (x64) VMware ESXi 6.5 EP15 / 6.7 Update3 or later Citrix Hypervisor 8.1.0 or later
LAN	2 x 1GbE LAN ports (1 x Intel® I350-AM2) 1 x 10/100/1000 management LAN	Weight	Net Weight: 17.78 kg / Gross Weight: 24.76 kg
Video	Integrated in Aspeed® AST2500 2D Video Graphic Adapter with PCIe bus interface 1920x1200@60Hz 32bpp	System Fans	4 x 80x80x38mm (16,300rpm)
Storage	Front side: 24 x 2.5" Gen4 U.2 hot-swappable SSD bays Rear side: 2 x 2.5" SATA/SAS hot-swappable HDD/SSD bays 2 x M.2 slot: M-key, PCIe Gen4 x4 per slot - Supports NGFF-2242/2260/2280 cards	Operating Properties	Operating temperature: 10°C to 35°C Operating humidity: 8%-80% (non-condensing) Non-operating temperature: -40°C to 60°C Non-operating humidity: 20%-95% (non-condensing)
Expansion Slots	1 x low profile PCIe Gen4 x8 expansion slots	Packaging Content	1 x R272-Z34, 1 x CPU heatsink, 1 x Rail kit
Internal I/O	2 x M.2 slots, 1 x USB 3.0 header, 1 x USB 2.0 header, 1 x COM_2 header, 1 x TPM header, 1 x Front panel header, 1 x HDD back plane board header, 1 x PMBus connector, 1 x IPMB connector, 1 x Clear CMOS jumper, 1 x BIOS recovery jumper, 1 x Buzzer	Reference Numbers	Barebone package: 6NR272Z34MR-00 - Motherboard: 9MZ32AR1NR-00 - Rail kit: 25HB2-3A0202-K0R - CPU heatsink: 25ST1-15320E-J1R - Back plane board_24-port: 9CBP2008NR-00 - Back plane board_2-port: 9CBP2023NR-00 - PCIe pass through board: 9CEP2080NR-00 - PCIe NVMe Card: 9CNV3143NR-00 - OCP NVMe Card: 9CNVP143NR-00 - Front panel board: 9CFP2001NR-00 - Fan module: 25ST2-883829-D0R - Power supply: 25EP0-212003-D0S - Fan duct for 280W CPU: 25HA8-R27231-S5R (optional)
Front I/O	2 x USB 3.0		
Rear I/O	3 x USB 3.0, 1 x VGA, 1 x COM, 2 x RJ45, 1 x MLAN		

* All specifications are subject to change without notice. Please visit our website for the latest information.

* AMD, and the AMD Arrow logo, AMD EPYC and combinations thereof are trademarks of Advanced Micro Devices, Inc.

