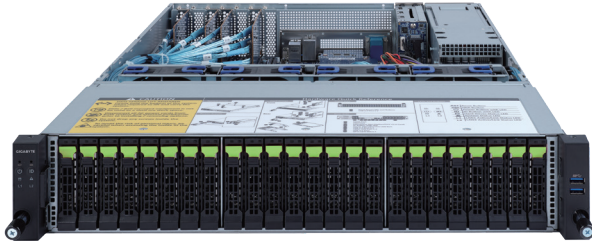


R272-Z34

Rack Server - 2U UP 26-Bay Gen4 NVMe



Features

- Hardware-level root of trust support
- Single AMD EPYC™ 7003 Series processors
- 8-Channel RDIMM/LRDIMM DDR4, 16 x DIMMs
- 2 x 1Gb/s LAN ports (Intel® I350-AM2)
- 1 x Dedicated management port
- 24 x 2.5" Gen4 U.2 hot-swappable SSD bays in front side
- 2 x 2.5" SATA/SAS hot-swappable HDD/SSD bays in rear side
- Ultra-Fast M.2 with PCIe Gen4 x4 interface
- 1 x PCIe Gen4 x8 expansion slot
- 1+1 1200W (240V) 80 PLUS Platinum redundant power supply

Specification

| | | | |
|------------------------|--|-----------------------------|--|
| Dimensions | 2U (W438 x H87.5 x D660 mm) | Backplane I/O | Front side_CBP2008: 24 x Gen4 U.2 ports Rear side_CBP2023: 2 x SATA/SAS ports Speed and bandwidth: SATA/ SAS/ PCIe Gen4 x4 per port |
| Motherboard | MZ32-AR1 Rev. 3.0 | TPM | 1 x TPM header with SPI interface Optional TPM2.0 kit: CTM010 |
| CPU | AMD EPYC™ 7003 Series processors Single processor, 7nm technology, cTDP up to 280W Up to 64-core, 128 threads per processor Compatible with AMD EPYC™ 7002 Series processors | Power Supply | 1+1 1200W (240V) 80 PLUS Platinum redundant power supply |
| Chipset | System on Chip | System Management | Aspeed® AST2500 management controller GIGABYTE Management Console (AMI MegaRAC SP-X) |
| Memory | 8-Channel DDR4 memory, 16 x DIMM slots RDIMM/LRDIMM modules up to 128GB supported 3DS RDIMM/LRDIMM modules up to 256GB supported Memory speed: Up to 3200/2933 MHz | OS Compatibility | Windows Server 2016 / 2019 RHEL 8.3 (x64) or later SLES 12 SP5 (x64) / 15 SP2 (x64) or later Ubuntu 18.04.5 LTS (x64) / 20.04 LTS (x64) or later VMware ESXi 6.7 Update3 P03 / 7.0 Update1 or later Citrix Hypervisor 8.2.0 or later |
| LAN | 2 x 1GbE LAN ports (1 x Intel® I350-AM2) 1 x 10/100/1000 management LAN | Weight | Net Weight: 17.78 kg / Gross Weight: 24.76 kg |
| Video | Integrated in Aspeed® AST2500 2D Video Graphic Adapter with PCIe bus interface 1920x1200@60Hz 32bpp | System Fans | 4 x 80x80x38mm (16,300rpm) |
| Storage | Front side: 24 x 2.5" Gen4 U.2 hot-swappable SSD bays Rear side: 2 x 2.5" SATA/SAS hot-swappable HDD/SSD bays | Operating Properties | Operating temperature: 10°C to 35°C Operating humidity: 8%-80% (non-condensing) Non-operating temperature: -40°C to 60°C Non-operating humidity: 20%-95% (non-condensing) |
| RAID | - | Packaging Content | 1 x R272-Z34 system, 1 x CPU heatsink, 1 x Rail kit |
| Expansion Slots | 1 x PCIe x16 slot (Gen4 x8), LPHL 1 x OCP 2.0 mezzanine slot with PCIe Gen4 x16 bandwidth - Occupied by CNVP143, 4 x NVMe HBA 2 x M.2 slots - M-key, PCIe Gen4 x4, supports NGFF-2242/2260/2280 cards | Reference Numbers | Barebone package: 6NR272Z34MR-00 Rev. A00 - Motherboard: MZ32AR1NR-00 Rev. 3.0 - Rail kit: 25HB2-3A0202-K0R - CPU heatsink: 25ST1-15320E-J1R - Back plane board_24-port: 9CBP2007NR-00 - Back plane board_2-port: 9CBP2023NR-00 - PCIe NVMe Card: 9CNV3134NR-00 - OCP NVMe Card: 9CNVP143NR-00 - Front panel board: 9CFP2001NR-00 - Fan module: 25ST2-883829-D0R - Power supply: 25EP0-212003-DOS - Fan duct for 280W CPU: 25HA8-R27231-S5R |
| Internal I/O | 1 x USB 3.0 header, 1 x USB 2.0 header, 1 x COM_2 header, 1 x TPM header, 1 x Front panel header, 1 x HDD back plane board header, 1 x PMBus connector, 1 x IPMB connector, 1 x Clear CMOS jumper, 1 x BIOS recovery jumper, 1 x Buzzer | | |
| Front I/O | 2 x USB 3.0 | | |
| Rear I/O | 3 x USB 3.0, 1 x VGA, 1 x COM, 2 x RJ45, 1 x MLAN | | |

* All specifications are subject to change without notice. Please visit our website for the latest information.

* AMD, and the AMD Arrow logo, AMD EPYC and combinations thereof are trademarks of Advanced Micro Devices, Inc.

