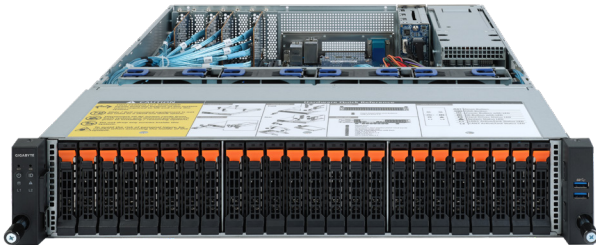
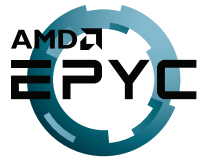


R272-Z32

Rack Server - 2U UP 26-Bay NVMe



Features

- Supports GRAID SupremeRAID SR-1000 NVMe RAID card
- Single AMD EPYC™ 7002 Series processors
- 8-Channel RDIMM/LRDIMM DDR4, 16 x DIMMs
- 2 x 1Gb/s LAN ports (Intel® I350-AM2)
- 1 x Dedicated management port
- 24 x 2.5" NVMe hot-swappable SSD bays in front side
- 2 x 2.5" SATA/SAS hot-swappable HDD/SSD bays in rear side
- Ultra-Fast M.2 with PCIe Gen3 x4 interface
- 1 x PCIe Gen4 x8 expansion slot
- Aspeed® AST2500 remote management controller
- 1+1 1200W (240V) 80 PLUS Platinum redundant power supply

Specification

Dimensions	2U (W438 x H87.5 x D660 mm)	TPM	1 x TPM header with SPI interface Optional TPM2.0 kit: CTM010
Motherboard	MZ32-AR0	Power Supply	Dual 1200W 80 PLUS Platinum redundant power supply AC Input: 100-240V
CPU	AMD EPYC™ 7002 Series processors Single processor, 7nm technology, cTDP up to 240W Up to 64-core, 128 threads per processor Compatible with AMD EPYC™ 7001 Series processors	System Management	Aspeed® AST2500 management controller GIGABYTE Management Console (AMI MegaRAC SP-X)
Chipset	System on Chip	OS Compatibility	Windows Server 2016 / 2019 RHEL 7.6 / 8.0 or later SLES 12 SP4 / 15 SP1 or later Ubuntu 16.04.6 LTS / 8.04.3 LTS / 20.04 LTS or later VMware ESXi 6.5 EP15 / 6.7 Update3 / 7.0 / 7.0 U1 or later Citrix Hypervisor 8.1.0 or later
Memory	8-Channel DDR4 memory, 16 x DIMM slots RDIMM/LRDIMM modules up to 128GB supported 3DS RDIMM/LRDIMM modules up to 256GB supported Memory speed: Up to 3200/2933 MHz	System Fans	4 x 80x80x38mm (16,300rpm)
LAN	2 x 1GbE LAN ports (1 x Intel® I350-AM2) 1 x 10/100/1000 management LAN	Operating Properties	Operating temperature: 10°C to 35°C Operating humidity: 8%-80% (non-condensing) Non-operating temperature: -40°C to 60°C Non-operating humidity: 20%-95% (non-condensing)
Video	Integrated in Aspeed® AST2500 2D Video Graphic Adapter with PCIe bus interface 1920x1200@60Hz 32bpp	Packaging Content	1 x R272-Z32 system 1 x CPU heatsink 1 x Rail kit
Storage	Front side: 24 x 2.5" NVMe hot-swappable SSD bays Rear side: 2 x 2.5" SATA/SAS hot-swappable HDD/SSD bays	Reference Numbers	Barebone package: 6NR272Z32MR-00 - Motherboard: MZ32AR0NR-00 - Rail kit: 25HB2-3A0202-K0R - CPU heatsink: 25ST1-15320E-J1R - Power supply: 25EP0-212003-D0S - GRAID SupremeRAID Core Software Module License (optional): 25FC1-SRBUN1-AFS (4-native NVMe RAID) 25FC1-SRBUN2-AFS (8-native NVMe RAID) 25FC1-SRBUN3-AFS (12-native NVMe RAID) 25FC1-SRBUN0-AFS (32-native NVMe RAID)
Expansion Slots	1 x PCIe x16 slot (Gen4 x8), low profile 2 x M.2 slots - M-key, PCIe Gen4 x4, supports NGFF-2242/2260/2280 cards		
Front I/O	2 x USB 3.0		
Rear I/O	3 x USB 3.0, 1 x VGA, 1 x COM, 2 x RJ45, 1 x MLAN		
Backplane I/O	Front side_CBP2005: 24 x NVMe ports Rear side_CBP2021: 2 x SATA/SAS ports Speed and bandwidth: PCIe Gen3 x4 per port		



Learn more about GIGABYTE server solutions, visit www.gigabyte.com/Enterprise

* All specifications are subject to change without notice. Please visit our website for the latest information.

* AMD, and the AMD Arrow logo, AMD EPYC and combinations thereof are trademarks of Advanced Micro Devices, Inc.

* All other brands, logos and names are property of their respective owners.

© 2021 GIGABYTE Technology Co., Ltd. All rights reserved.