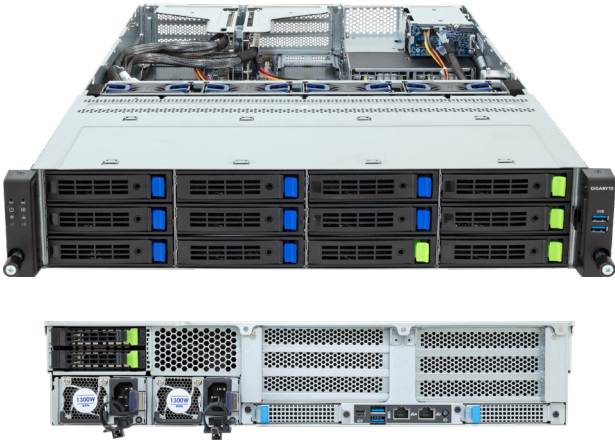


R263-Z37-AAH1

Rack Server - 2U UP 14-Bay NVMe/SATA/SAS



Features

- AMD EPYC™ 9004 Series processors
- AMD EPYC™ 9004 Series processors with AMD 3D V-Cache™
- Single processor, 5nm technology
- 12-Channel RDIMM DDR5, 12 x DIMMs
- Dual ROM Architecture
- 1 x 1Gb/s LAN port
- 1 x Dedicated management port
- 4 x 3.5"/2.5" Gen5 NVMe hot-swappable bays
- 8 x 3.5"/2.5" SATA/SAS-4 hot-swappable bays
- 2 x 2.5" Gen5 NVMe hot-swappable bays on the rear side
- 1 x M.2 slot with PCIe Gen3 x4 interface
- 4 x FHHL PCIe Gen5 x16 slots
- 2 x OCP 3.0 Gen5 x16 slots
- 1+1 1300W 80 PLUS Titanium redundant power supplies

Specification

Dimensions	2U (W4438 x H87.5 x D710 mm)	Front I/O	2 x USB 3.2 Gen1
Motherboard	MZ33-DC1	Rear I/O	2 x USB 3.2 Gen1, 1 x Mini-DP, 1 x RJ45, 1 x MLAN
CPU	AMD EPYC™ 9004 Series processors AMD EPYC™ 9004 Series processors with AMD 3D V-Cache™ Single processor cTDP up to 300W at ambient 35°C	TPM	1 x TPM header with SPI interface (Optional TPM2.0 kit: CTM010)
Socket	1 x LGA 6096	Power Supply	1+1 1300W 80 PLUS Titanium redundant power supplies AC Input: 100-240V
Chipset	System on Chip	System Management	Aspeed® AST2600 management controller GIGABYTE Management Console (AMI MegaRAC SP-X)
Memory	12-Channel DDR5 memory, 12 x DIMM slots RDIMM modules up to 96GB supported 3DS RDIMM modules up to 256GB supported Memory speed: Up to 4800 MHz	OS Compatibility	Windows Server 2019 / 2022 RHEL 8.6 / 8.7 / 9.0 / 9.1 / 9.2 (x64) SLES 15 SP4 / SP5 (x64) Ubuntu 20.04.6 / 22.04 / 22.04.1 / 22.04.2 / 22.04.3 LTS (x64) VMware ESXi 7.0 Update 3i / 8.0 / 8.0 Update 1 Citrix Hypervisor 8.2 LTSR CU1
LAN	1 x 1Gb/s LAN ports (1 x Intel® I210-AT) - Supported NCSI function 1 x 10/100/1000 management LAN	System Fans	4 x 80x80x38mm (18,300rpm)
Video	Integrated in Aspeed AST2600 2D Video Graphic Adapter with PCIe bus interface 1920x1200@60Hz 32bpp, DDR4 SDRAM	Operating Properties	Operating temperature: 10°C to 35°C Operating humidity: 8-80% (non-condensing) Non-operating temperature: -40°C to 60°C Non-operating humidity: 20%-95% (non-condensing)
Storage	Front side: 4 x 3.5"/2.5" Gen5 NVMe hot-swappable bays 8 x 3.5"/2.5" SATA/SAS-4 hot-swappable bays Rear side: 2 x 2.5" Gen5 NVMe hot-swappable bays	Packaging Content	1 x R263-Z37-AAH1, 1 x CPU heatsink, 1 x Mini-DP to D-Sub cable, 1 x 2-Section Rail kit
SAS	Depends on SAS add-in cards	Reference Numbers	Barebone package: 6NR263Z37DR000AAC1* - Motherboard: 9MZ33DC1UR-000 - 2-Section Rail kit (CMA not supported): 25HB2-3A0203-K0R - CPU heatsink: 25ST1-143100-A0R - Mini-DP to D-Sub cable: 25CRN-200801-K1R - Power supply: 25EP0-213005-G1S
RAID	N/A		
Expansion Slots	4 x FHHL PCIe Gen5 x16 slots 2 x OCP 3.0 Gen5 x16 slots - Supporte NCSI function 1 x M.2 slot (M-key, PCIe Gen3 x4, NGFF-2280/22110)		



Learn more about GIGABYTE server, visit <https://www.gigacomputing.com>

* All specifications are subject to change without notice. Please visit our website for the latest information.

* AMD, the AMD Arrow logo, EPYC and combinations thereof are trademarks of Advanced Micro Devices, Inc.

* All other brands, logos and names are property of their respective owners.

© 2024 Giga Computing Technology Co., Ltd. All rights reserved.

Designed by

