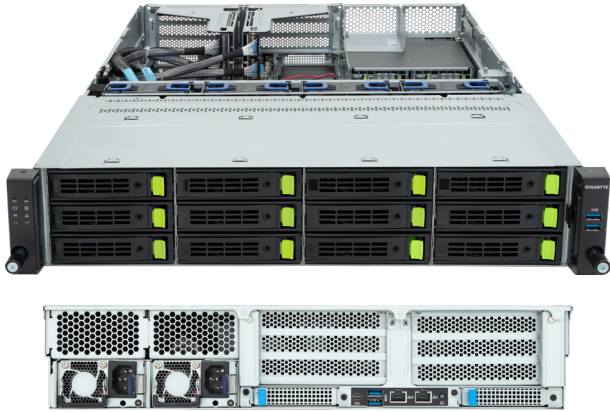
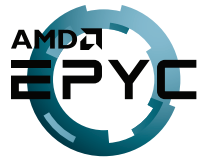


R263-Z30-AAC1

2U UP 12-Bay NVMe/SATA/SAS Rack Server



Features

- AMD EPYC™ 9004 series processor family
- Single processor, 5nm technology
- 12-Channel RDIMM DDR5, 12 x DIMMs
- Dual ROM Architecture supported
- 1 x 1Gb/s LAN port (Intel® I210-AT)
- 1 x Dedicated management port
- 12 x 3.5/ 2.5" Gen4 NVMe/ SATA hot-swappable bays
- Ultra-Fast M.2 with PCIe Gen3 x4 interface
- 2 x PCIe Gen5 x16 expansion slots
- 2 x OCP 3.0 Gen5 x16 mezzanine slots
- Dual 1300W 80 PLUS Platinum redundant power supply

Specification

Dimensions	2U (W438 x H87.5 x D700 mm)	Backplane I/O	PCIe Gen4 x4 or SATA 6Gb/s or SAS 12Gb/s
Motherboard	MZ33-DC0	TPM	1 x TPM header with SPI interface Optional TPM2.0 kit: CTM010
CPU	AMD EPYC™ 9004 series processor Single processor, 5nm technology, cTDP up to 360W Up to 96-core, 192 threads per processor 1 x LGA 6096 Socket SP5	Power Supply	Dual 1300W 80 PLUS Platinum redundant power supply AC Input: 100-240V
Chipset	System on Chip	System Management	Aspeed® AST2600 management controller GIGABYTE Management Console (AMI MegaRAC SP-X)
Memory	12 x DIMM slots 12-Channel DDR5 memory, up to 4800 MHz RDIMM modules up to 128GB supported 3DS RDIMM modules up to 256GB supported	OS Compatibility	Windows Server 2019 / 2022 RHEL 8.6 / 9 (x64) or later SLES 15 SP4 (x64) or later Ubuntu 20.04.5 LTS / 22.04 LTS (x64) or later VMware ESXi 7 P05 / 8 or later Citrix Hypervisor 8.2.1 or later
LAN	1 x 1Gb/s LAN ports (1 x Intel® I210-AT) Supported NCSI function 1 x 10/100/1000 management LAN	System Fans	4 x 80x80x38mm (16,300rpm)
Video	Integrated in Aspeed AST2600 2D Video Graphic Adapter with PCIe bus interface 1920x1200@60Hz 32bpp, DDR4 SDRAM	Operating Properties	Operating temperature: 10°C to 35°C Operating humidity: 8-80% (non-condensing) Non-operating temperature: -40°C to 60°C Non-operating humidity: 20%-95% (non-condensing)
Storage	12 x 3.5/ 2.5" Gen4 NVMe/ SATA/ SAS hot-swappable bays SAS card is required for SAS devices support	Packaging Content	1 x R263-Z30, 1 x CPU heatsink, 1 x Rail kit
Expansion Slots	2 x PCIe Gen5 x16 FHHL slots 2 x PCIe Gen5 x16 OCP 3.0 slots - Supporte NCSI function 1 x M.2 slot (M-key, PCIe Gen3 x4, NGFF-2280/22110)	Reference Numbers	Barebone package: 6NR263Z30DR000AAC1* - Rail kit: 25HB2-3A0203-K0R - Motherboard: 9MZ33DCOUR-000 - CPU heatsink: 25ST1-143100-A0R - Mini-DP to D-Sub cable: 25CRN-200801-K1R - Power supply: 25EP0-213004-F3S
Front I/O	2 x USB 3.2 Gen1		
Rear I/O	2 x USB 3.2 Gen1, 1 x Mini-DP, 1 x RJ45, 1 x MLAN		



Learn more about GIGABYTE server solutions, visit www.gigabyte.com/Enterprise

* All specifications are subject to change without notice. Please visit our website for the latest information.
* AMD, and the AMD Arrow logo, AMD EPYC and combinations thereof are trademarks of Advanced Micro Devices, Inc.
* All other brands, logos and names are property of their respective owners.

© 2022 GIGABYTE Technology Co., Ltd. All rights reserved.