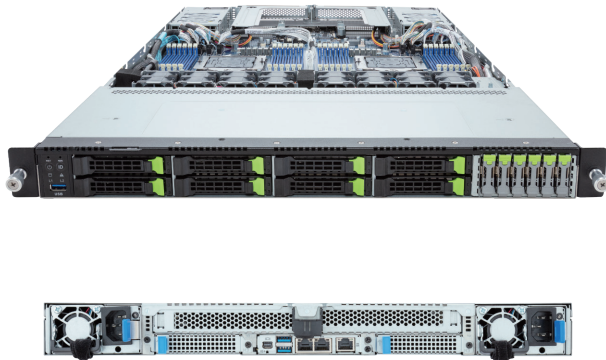


# R183-Z95-AAD1

Rack Server - 1U DP 6-Bay E1.S + 8-Bay NVMe/SATA



## Key Features

- Dual AMD EPYC™ 9005/9004 Series Processors
- 12-Channel DDR5 RDIMM, 24 x DIMMs
- Dual ROM Architecture
- 2 x 1Gb/s LAN ports via Intel® I350-AM2
- 6 x E1.S NVMe hot-swap bays
- 8 x 2.5" Gen5 NVMe/SATA/SAS-4 hot-swap bays
- 3 x M.2 slots with PCIe Gen3 x4 and x2 interface
- 2 x FHHL PCIe Gen5 x16 slots
- 2 x OCP NIC 3.0 PCIe Gen5 x16 slots
- Dual 1600W 80 PLUS Platinum redundant power supply

## Application

Networking, Hybrid/Private Cloud Server...

## Specification

|                        |  |                             |  |
|------------------------|--|-----------------------------|--|
| <b>Dimensions</b>      | 1U (W438 x H43.5 x D815 mm)  | <b>I/O Ports</b>            | Front: 2 x USB 3.2 Gen1<br>Rear: 2 x USB 3.2 Gen1, 2 x Mini-DP, 1 x RJ45, 1 x MLAN   |
| <b>Motherboard</b>     | MZ93-FS1   | <b>Backplane Board</b>      | Speed and bandwidth:<br>PCIe Gen5 x4 or SATA 6Gb/s or SAS-4 24Gb/s   |
| <b>CPU</b>             | AMD EPYC™ 9005 Series Processors<br>AMD EPYC™ 9004 Series Processors<br>Dual processors, cTDP up to 300W<br>- At ambient 30°C, cTDP up to 400W   | <b>Security Modules</b>     | 1 x TPM header with SPI interface<br>- Optional TPM2.0 kit: CTM010   |
| <b>Socket</b>          | 2 x LGA 6096 (Socket SP5)  | <b>Power Supply</b>         | Dual 1600W 80 PLUS Platinum redundant power supply<br>AC Input: 100-240V   |
| <b>Chipset</b>         | System on Chip   | <b>System Management</b>    | ASPEED® AST2600 Baseboard Management Controller<br>GIGABYTE Management Console web interface   |
| <b>Memory</b>          | 12-Channel DDR5 RDIMM, 24 x DIMMs<br>[EPYC 9005] Up to 6000 MT/s<br>[EPYC 9004] Up to 4800 MT/s  | <b>OS Support</b>           | Windows Server, Red Hat Enterprise Linux server, Ubuntu,<br>SUSE Linux Enterprise server, VMware ESXi, Citrix Hypervisor   |
| <b>LAN</b>             | 2 x 1Gb/s LAN (1 x Intel® I350-AM2) - Supports NCSI function<br>1 x 10/100/1000 Mbps Management LAN  | <b>System Fans</b>          | 8 x 40x40x56mm (32,000rpm)   |
| <b>Video</b>           | Integrated in ASPEED® AST2600 - 1 x Mini-DP  | <b>Operating Properties</b> | Operating temperature: 10°C to 35°C<br>Operating humidity: 8%-80% (non-condensing)<br>Non-operating temperature: -40°C to 60°C<br>Non-operating humidity: 20%-95% (non-condensing)                     |
| <b>Storage</b>         | Front hot-swap:<br>6 x 9.5mm E1.S NVMe<br>8 x 2.5" Gen5 NVMe/SATA/SAS-4<br>*SAS card is required to support SAS drives.<br><br>Internal M.2:<br>2 x M.2 (2280/22110), PCIe Gen3 x4<br>1 x M.2 (2280/22110), PCIe Gen3 x2 | <b>Packaging Content</b>    | 1 x R183-Z95-AAD1, 2 x CPU heatsinks,<br>1 x Mini-DP to D-Sub cable, 1 x 2-Section Rail kit<br>Packaging Dimensions: 1045 x 595 x 249 mm   |
| <b>RAID</b>            | Require RAID add-in cards  | <b>Part Numbers</b>         | Barebone package: 6NR183Z95DR000ACD1*<br>Optional parts:<br>- 3-Section Rail kit (Supports CMA): 25HB2-A56121-K0R<br>- Cable Management Arm: 25HB1-R18300-K0R<br>- RMA packaging: 6NR183Z95SR-RMA-A100 |
| <b>Expansion Slots</b> | 2 x FHHL PCIe Gen5 x16 slots<br>2 x OCP NIC 3.0 PCIe Gen5 x16 slots - Supports NCSI function   |                             |  |



Learn more at <https://www.GIGABYTE.com/enterprise>

\* All specifications are subject to change without notice. Please visit our website for the latest information.  
\* AMD, the AMD Arrow logo, EPYC and combinations thereof are trademarks of Advanced Micro Devices, Inc.  
\* All other brands, logos and names are property of their respective owners.

© 2024 Giga Computing Technology Co., Ltd. All rights reserved.

Designed by

