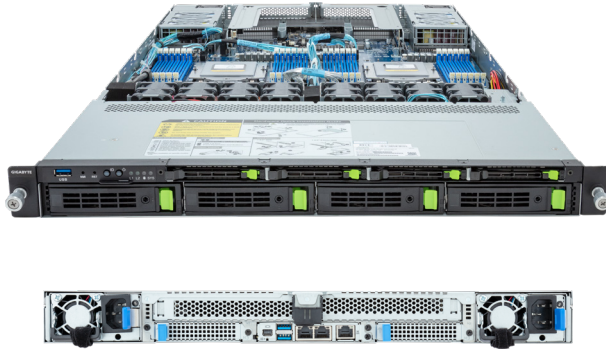


# R183-Z91-AAD1

## 1U DP 8-Bay NVMe/SATA/SAS Rack Server



### Features

- AMD EPYC™ 9004 series processor family
- Dual processors, 5nm technology
- 2-Channel RDIMM DDR5, 24 x DIMMs
- Dual ROM Architecture supported
- 2 x 1Gb/s LAN ports
- 1 x dedicated management port
- 4 x 3.5/2.5" Gen4 NVMe/SATA hot-swappable bays
- 4 x 2.5" 9.5mm Gen4 NVMe/SATA hot-swappable bays
- 3 x Ultra-Fast M.2 with PCIe Gen3 interface
- 2 x FHHL PCIe Gen5 x16 expansion slots
- 2 x OCP 3.0 Gen5 x16 mezzanine slots
- Dual 1600W 80 PLUS Platinum redundant power supply

### Specification

|                        |   |                             |   |
|------------------------|---|-----------------------------|---|
| <b>Dimensions</b>      | 1U (W438 x H43.5 x D815 mm)   | <b>Backplane I/O</b>        | PCIe Gen4 x4 or SATA 6Gb/s or SAS 12Gb/s  |
| <b>Motherboard</b>     | MZ93-FS0  | <b>TPM</b>                  | 1 x TPM header with SPI interface (Optional TPM2.0 kit: CTM010)   |
| <b>CPU</b>             | AMD EPYC™ 9004 series processor<br>Dual processors, 5nm technology, cTDP up to 300W<br>Up to 96-core, 192 threads per processor<br>2 x LGA 6096 Socket SP5  | <b>Power Supply</b>         | Dual 1600W 80 PLUS Platinum redundant power supply<br>AC Input: 100-240V  |
| <b>Chipset</b>         | System on Chip  | <b>System Management</b>    | Aspeed® AST2600 management controller<br>GIGABYTE Management Console (AMI MegaRAC SP-X)   |
| <b>Memory</b>          | 24 x DIMM slots<br>12-Channel DDR5 memory, up to 4800 MHz<br>RDIMM modules up to 128GB supported<br>3DS RDIMM modules up to 256GB supported   | <b>OS Compatibility</b>     | Windows Server 2019 / 2022<br>RHEL 8.6 / 8.7 / 9 / 9.1 (x64)<br>SLES 15 SP4 (x64)<br>Ubuntu 20.04.5 LTS / 22.04 LTS / 22.04.1 LTS (x64)<br>VMware ESXi 7.0 Update 3i / 8.0<br>Citrix Hypervisor 8.2.1   |
| <b>LAN</b>             | 2 x 1GbE LAN ports (1 x Intel I350-AM2)<br>Supported NCSI function<br>1 x 10/100/1000 management LAN  | <b>System Fans</b>          | 8 x 40x40x56mm (32,000rpm)  |
| <b>Video</b>           | Integrated in Aspeed AST2600<br>2D Video Graphic Adapter with PCIe bus interface<br>1920x1200@60Hz 32bpp, DDR4 SDRAM  | <b>Operating Properties</b> | Operating temperature: 10°C to 35°C<br>Operating humidity: 8-80% (non-condensing)<br>Non-operating temperature: -40°C to 60°C<br>Non-operating humidity: 20%-95% (non-condensing)   |
| <b>Storage</b>         | 4 x 3.5/ 2.5" Gen4 NVMe/ SATA / SAS hot-swappable bays<br>4 x 2.5" 9.5mm Gen4 NVMe / SATA / SAS hot-swappable bays<br>SAS card is required for SAS devices support                                      | <b>Packaging Content</b>    | 1 x R183-Z91<br>2 x CPU heatsinks<br>1 x Rail kit   |
| <b>Expansion Slots</b> | 2 x PCIe Gen5 x16 FHHL slots<br>2 x PCIe Gen5 x16 OCP 3.0 slots - Supporte NCSI function<br>2 x M.2 slots (M-key, PCIe Gen3 x4, NGFF-2280/22110)<br>1 x M.2 slot (M-key, PCIe Gen3 x2, NGFF-2280/22110) | <b>Reference Numbers</b>    | Barebone package: 6NR183Z91DR000AAD1*<br>- Motherboard: 9MZ93FS0UR-000<br>- Rail kit: 25HB2-3A0206-K0R<br>- CPU heatsink: 25ST1-553202-A0R<br>- Back plane board: 9CBP1047NR-00<br>- Mini-DP to D-Sub cable: 25CRN-200801-K1R<br>- Power supply: 25EP0-216008-L0S |
| <b>Front I/O</b>       | 1 x USB 3.2 Gen1  |                             |   |
| <b>Rear I/O</b>        | 2 x USB 3.2 Gen1, 1 x Mini-DP, 2 x RJ45, 1 x MLAN   |                             |   |



Learn more about GIGABYTE server, visit [www.gigabyte.com/Enterprise](http://www.gigabyte.com/Enterprise)

\* All specifications are subject to change without notice. Please visit our website for the latest information.  
\* AMD, the AMD Arrow logo, EPYC and combinations thereof are trademarks of Advanced Micro Devices, Inc.  
\* All other brands, logos and names are property of their respective owners.

© 2023 Giga Computing Technology Co., Ltd. All rights reserved.

Engineered by

