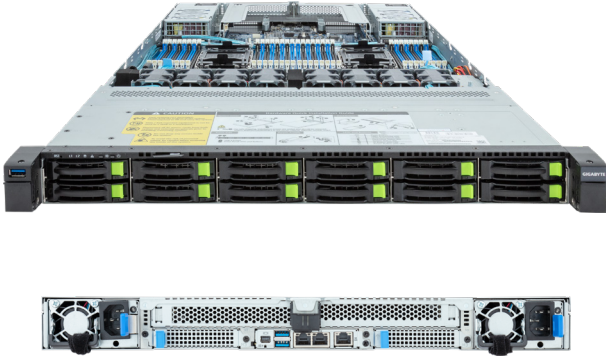


R183-S96-AAV1

Rack Server - 1U DP 12-Bay Gen5 NVMe/SATA/SAS4



Features

- 5th Gen Intel® Xeon® Scalable Processors
- 4th Gen Intel® Xeon® Scalable Processors
- Intel® Xeon® CPU Max Series
- Dual processor, LGA 4677
- 8-Channel RDIMM DDR5 per processor, 32 x DIMMs
- Dual ROM Architecture
- 2 x 1Gb/s LAN ports
- 1 x Dedicated management port
- 12 x 2.5" Gen5 NVMe/SATA/SAS4 hot-swappable bays
- 2 x FHHL PCIe Gen5 x16 slots
- 2 x OCP 3.0 Gen5 x16 slots
- 1+1 1600W 80 PLUS Titanium redundant power supplies

Specification

Dimensions	1U (W438 x H43.5 x D815 mm)	Backplane I/O	PCIe Gen5 x4 or SATA 6Gb/s or SAS4 24Gb/s
Motherboard	MS93-FS0	TPM	1 x TPM header with SPI interface (Optional TPM2.0 kit: CTM010)
CPU	4th/5th Generation Intel® Xeon® Scalable Processors Intel® Xeon® CPU Max Series Dual processor, CPU TDP up to 350W 2 x LGA4677 Socket E	Power Supply	1+1 1600W 80 PLUS Titanium redundant power supplies AC Input: 100-240V
Chipset	Intel® C741 Chipset	System Management	Aspeed® AST2600 management controller GIGABYTE Management Console (AMI MegaRAC SP-X)
Memory	8-Channel DDR5 memory, 32 x DIMM slots RDIMM modules up to 96GB supported 3DS RDIMM modules up to 256GB supported Up to 5600MHz (1DPC), 4400MHz (2DPC)	OS Compatibility	Windows Server 2019 / 2022 RHEL 8.6 / 8.7 / 9.0 / 9.1 / 9.2 (x64) SLES 15 SP4 (x64) Ubuntu 20.04.6 / 22.04 / 22.04.1 / 22.04.2 / 22.04.3 LTS (x64) VMware ESXi 7.0 Update 3i / 8.0 / 8.0 Update 1 Citrix Hypervisor 8.2 LTSR CU1
LAN	2 x 1Gb/s LAN ports (1 x Intel® I350-AM2) - Support NCSI function 1 x 10/100/1000 management LAN	System Fans	8 x 40x40x56mm (32,000rpm)
Video	Integrated in Aspeed AST2600 2D Video Graphic Adapter with PCIe bus interface 1920x1200@60Hz 32bpp, DDR4 SDRAM	Operating Properties	Operating temperature: 10°C to 35°C Operating humidity: 8-80% (non-condensing) Non-operating temperature: -40°C to 60°C Non-operating humidity: 20%-95% (non-condensing)
Storage	12 x 2.5" Gen5 NVMe/SATA/SAS4 hot-swappable bays SAS card is required for SAS devices support	Packaging Content	1 x R183-S96, 2 x CPU heatsinks, 1 x Mini-DP to D-Sub cable, 6 x Carrier clips, 1 x 2-Section Rail kit
RAID	Intel® SATA RAID 0/1/10/5	Part Numbers	Barebone package (4th/5th Gen): 6NR183S96DR000ABV1* Barebone package (4th Gen): 6NR183S96DR000AAV1* - Motherboard: 9AS93FS0UR-000 - 2-Section Rail kit (CMA not supported): 25HB2-3A0206-K0R - CPU heatsink: 25ST1-4Z3200-S7R - Mini-DP to D-Sub cable: 25CRN-200801-K1R - Power supply: 25EP0-21600E-L0S
Expansion Slots	2 x FHHL PCIe Gen5 x16 slots 2 x OCP 3.0 Gen5 x16 slots		
Front I/O	1 x USB 3.2 Gen1		
Rear I/O	2 x USB 3.2 Gen1, 1 x Mini-DP, 2 x RJ45, 1 x MLAN		



Learn more about GIGABYTE server, visit <https://www.gigacomputing.com>

* All specifications are subject to change without notice. Please visit our website for the latest information.
* Intel, the Intel logo, Xeon, and other Intel marks are trademarks of Intel Corporation or its subsidiaries.
* All other brands, logos and names are property of their respective owners.

© 2023 Giga Computing Technology Co., Ltd. All rights reserved.

Designed by

