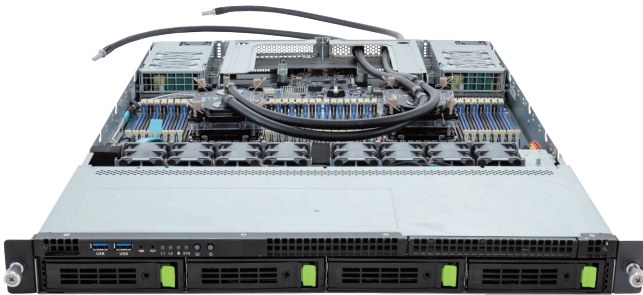


# R183-S90-LAD1

Rack Server - 1U DP 4-Bay NVMe/SATA/SAS

intel  
XEON



## Features

- Direct liquid cooling solution
- Dual 5th/4th Gen Intel® Xeon® Scalable Processors
- Dual Intel® Xeon® CPU Max Series
- 8-Channel DDR5 RDIMM, 32 x DIMMs
- Dual ROM Architecture
- 2 x 1Gb/s LAN ports via Intel® I350-AM2
- 4 x 3.5"/2.5" Gen4 NVMe/SATA/SAS hot-swappable bays
- 1 x FHHL PCIe Gen5 x16 slots
- 2 x OCP 3.0 Gen5 x16 slots
- 1+1 1600W 80 PLUS Platinum redundant power supplies

## Application

Networking, Hybrid/Private Cloud Server

## Specification

<b>Dimensions</b>	1U (W438 x H43.5 x D815 mm)	<b>Backplane Board</b>	Speed and bandwidth: PCIe Gen4 x4 or SATA 6Gb/s or SAS 12Gb/s
<b>Motherboard</b>	MS93-FS0	<b>Power Supply</b>	1+1 1600W 80 PLUS Platinum redundant power supply AC Input: 100-240V
<b>CPU</b>	5th Generation Intel® Xeon® Scalable Processors 4th Generation Intel® Xeon® Scalable Processors Intel® Xeon® CPU Max Series Dual processor, TDP up to 350W	<b>System Management</b>	ASPEED® AST2600 management controller GIGABYTE Management Console (AMI MegaRAC SP-X)
<b>Socket</b>	2 x LGA 4677 (Socket E)	<b>OS Compatibility</b>	Windows Server 2019 / 2022 RHEL 8.6 / 8.7 / 8.8 / 8.9 / 8.10 / 9.0 / 9.1 / 9.2 / 9.3 / 9.4 SLES 15 SP4 / SP5 / SP6 Ubuntu 22.04 / 22.04.1 / 22.04.2 / 22.04.3 / 22.04.4 / 24.04 LTS VMware ESXi 7.0 Update 3o / 8.0 Update 1, Update 2, Update 3 Citrix Hypervisor 8.2 LTSR CU1
<b>Chipset</b>	Intel® C741 Chipset	<b>System Fans</b>	8 x 40x40x56mm (32,000rpm)
<b>Memory</b>	32 x DIMM slots, 8-Channel DDR5 memory RDIMM up to 96GB supported 3DS RDIMM up to 256GB supported Memory speed: Up to 5600 MT/s (1DPC), 4400 MT/s (2DPC)	<b>Operating Properties</b>	Operating temperature: 10°C to 35°C Operating humidity: 8-80% (non-condensing) Non-operating temperature: -40°C to 60°C Non-operating humidity: 20%-95% (non-condensing)
<b>LAN</b>	2 x 1Gb/s LAN ports (1 x Intel® I350-AM2) - Supported NCSI 1 x 10/100/1000 management LAN	<b>Packaging Content</b>	1 x R183-S90-LAD1, 2 x CoolIT CPU cold plate loop, 6 x Carrier clips, 1 x Mini-DP to D-Sub cable, 1 x 2-Section Rail kit Packaging Dimensions: 1086 x 588 x 261 mm
<b>Video</b>	ASPEED® AST2600 Integrated 2D Graphic Adapter	<b>Part Numbers</b>	Barebone w/ cold plates (5th/4th Gen): 6NR183S90DR000LBD1* Barebone w/ cold plates (4th Gen): 6NR183S90DR000LAD1* Barebone w/o cold plates (5th/4th Gen): 6NR183S90DZ000LBD1* Barebone w/o cold plates (4th Gen): 6NR183S90DZ000LAD1* - 2-Section Rail kit (CMA not supported): 25HB2-3A0206-K0R - CoolIT CPU cold plate loop: 25ST7-100009-C4R - Mini-DP to D-Sub cable: 25CRN-200801-K1R - Power supply: 25EP0-21600C-LO5
<b>Storage</b>	4 x 3.5"/2.5" Gen4 NVMe/SATA/SAS hot-swappable bays SAS card is required for SAS devices support	<b>RAID</b>	Intel® SATA RAID 0/1/10/5
<b>Expansion Slots</b>	1 x FHHL PCIe Gen5 x16 slot 2 x OCP 3.0 Gen5 x16 slots - Supports NCSI function	<b>I/O Ports</b>	Front side: 2 x USB 3.2 Gen1 Rear side: 2 x USB 3.2 Gen1, 1 x Mini-DP, 2 x RJ45, 1 x MLAN Internal: 1 x TPM header, 1 x VROC connector
<b>TPM</b>	1 x TPM header with SPI interface (Optional TPM2.0 kit: CTM010)		



Learn more about GIGABYTE server at <https://www.gigabyte.com/Enterprise>

Designed by



\* All specifications are subject to change without notice. Please visit our website for the latest information.  
\* Intel, the Intel logo, Xeon, and other Intel marks are trademarks of Intel Corporation or its subsidiaries.  
\* All other brands, logos and names are property of their respective owners.

© 2024 Giga Computing Technology Co., Ltd. All rights reserved.