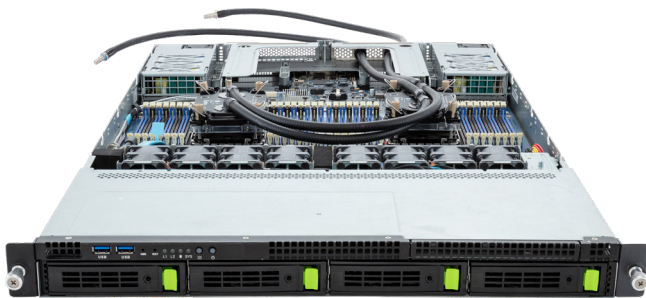


R183-S90-LAD1

Rack Server - 1U DP 4-Bay NVMe/SATA DLC



Features

- Direct liquid cooling solution
- 4th Gen Intel® Xeon® Scalable Processors
- Intel® Xeon® CPU Max Series
- Dual processors, LGA4677
- 8-Channel RDIMM DDR5 per processor, 32 x DIMMs
- Dual ROM Architecture supported
- 2 x 1Gb/s LAN port (Intel® I350-AM2)
- 1 x Dedicated management port
- 4 x 3.5/2.5" Gen4 NVMe/SATA hot-swappable bays
- 1 x FHHL PCIe Gen5 x16 expansion slot
- 2 x OCP 3.0 Gen5 x16 mezzanine slots
- 1+1 1600W 80 PLUS Platinum redundant power supplies

Specification

Dimensions	1U (W438 x H43.5 x D815 mm)	Rear I/O	2 x USB 3.2 Gen1, 1 x Mini-DP, 2 x RJ45, 1 x MLAN
Motherboard	MS93-FS0	Backplane I/O	PCIe Gen4 x4 or SATA 6Gb/s or SAS 12Gb/s
CPU	4th Generation Intel® Xeon® Scalable Processors Intel® Xeon® CPU Max Series Intel® Xeon® Platinum Processor, Intel® Xeon® Gold Processor, Intel® Xeon® Silver Processor CPU TDP up to 350W	TPM	1 x TPM header with SPI interface (Optional TPM2.0 kit: CTM010)
Socket	2 x LGA 4677 (Socket E)	Power Supply	1+1 1600W 80 PLUS Platinum redundant power supplies AC Input: 100-240V
Chipset	Intel® C741 Chipset	System Management	Aspeed® AST2600 management controller GIGABYTE Management Console (AMI MegaRAC SP-X)
Memory	32 x DIMM slots 8-Channel DDR5 memory RDIMM modules up to 96GB supported 3DS RDIMM modules up to 256GB supported Memory speed: Up to 4800 MHz (1DPC), 4400 MHz (2DPC)	OS Compatibility	Windows Server 2019 / 2022 RHEL 8.6 / 8.7 / 9.0 / 9.1 / 9.2 (x64) SLES 15 SP4 Ubuntu 22.04 LTS / 22.04.1 LTS / 22.04.2 LTS(x64) VMware ESXi 7.0 Update 3i / 8.0 / 8.0 Update 1 Citrix Hypervisor 8.2 LTSR CU1
LAN	2 x 1Gb/s LAN ports (1 x Intel® I350-AM2) Supported NCSI function 1 x 10/100/1000 management LAN	System Fans	8 x 40x40x56mm (32,000rpm)
Video	Integrated in Aspeed AST2600 2D Video Graphic Adapter with PCIe bus interface 1920x1200@60Hz 32bpp, DDR4 SDRAM	Operating Properties	Operating temperature: 10°C to 35°C Operating humidity: 8-80% (non-condensing) Non-operating temperature: -40°C to 60°C Non-operating humidity: 20%-95% (non-condensing)
Storage	4 x 3.5/ 2.5" Gen4 NVMe/ SATA/ SAS hot-swappable bays SAS card is required for SAS devices support	Packaging Content	1 x R183-S90, 1 x CPU liquid cooling kit, 1 x Mini-DP to D-Sub cable, 6 x Carrier clips, 1 x 2-Section Rail kit
RAID	Intel® SATA RAID 0/1/10/5	Reference Numbers	Barebone w/ liquid cooling kit: 6NR183S90DR000LAD1* Barebone w/o liquid cooling kit: 6NR183S90DZ000LAD1* - Motherboard: 9AS93FS0UR-000 - 2-Section Rail kit (CMA not supported): 25HB2-3A0206-K0R - CPU liquid cooling kit: 25ST7-100009-C4R - Mini-DP to D-Sub cable: 25CRN-200801-K1R - Power supply: 25EP0-21600C-L0S
Expansion Slots	1 x PCIe Gen5 x16 FHHL slot 2 x OCP 3.0 Gen5 x16 slots - Supporte NCSI function		
Front I/O	2 x USB 3.2 Gen1		



Learn more about GIGABYTE server, visit <https://www.gigacomputing.com>

- * All specifications are subject to change without notice. Please visit our website for the latest information.
- * Intel, the Intel logo, Xeon, and other Intel marks are trademarks of Intel Corporation or its subsidiaries.
- * All other brands, logos and names are property of their respective owners.

© 2023 Giga Computing Technology Co., Ltd. All rights reserved.

Engineered by

