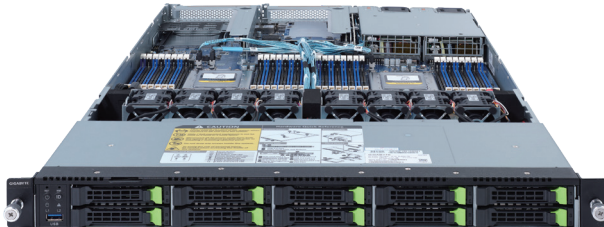


R182-Z93

Rack Server - 1U DP 10-Bay Gen4 NVMe



Features

- Hardware-level root of trust support
- Dual AMD EPYC™ 7003 Series processors
- 8-Channel RDIMM/LRDIMM DDR4 per processor, 32 x DIMMs
- 2 x 1Gb/s LAN ports (Intel® I350-AM2)
- 1 x Dedicated management port
- 10 x 2.5" Gen4 U.2 hot-swappable SSD bays
- Ultra-Fast M.2 with PCIe Gen4 x4 interface
- 2 x PCIe Gen4 x16 expansion slots
- 1 x OCP 3.0 Gen4 x16 mezzanine slot
- 1 x OCP 2.0 Gen3 x8 mezzanine slot
- 1200W (240V) 80 PLUS Platinum redundant power supply

Specification

Dimensions (WxHxD)	1U 438 x 43.5 x 730 mm	Rear I/O	2 x USB 3.0, 1 x VGA, 2 x RJ45, 1 x MLAN
Motherboard	MZ92-FS1 Rev. 3.0	Backplane I/O	Backplane P/N: 9CBP10A5NR-00 Speed and bandwidth: SATA/ SAS/ PCIe Gen4 x4
CPU	AMD EPYC™ 7003 Series processors Dual processors, 7nm technology, Socket SP3 Up to 64-core, 128 threads per processor TDP up to 225W, cTDP up to 240W, Fully support 280W Compatible with AMD EPYC™ 7002 Series processors	TPM	1 x TPM header with SPI interface Optional TPM2.0 kit: CTM010
Chipset	System on Chip	Power Supply	Dual 1200W (240V) 80 PLUS Platinum redundant power supply
Memory	32 x DIMM slots DDR4 memory supported only 8-Channel memory architecture RDIMM/LRDIMM modules up to 128GB supported 3DS RDIMM/LRDIMM modules up to 256GB supported Memory speed: Up to 3200 / 2933 MHz	System Management	Aspeed® AST2500 management controller GIGABYTE Management Console (AMI MegaRAC SP-X)
LAN	2 x 1GbE LAN ports (1 x Intel® I350-AM2) 1 x 10/100/1000 management LAN	OS Compatibility	Windows Server 2016 / 2019 RHEL 8.3 (x64) or later SLES 12 SP5 (x64) / 15 SP2 (x64) or later Ubuntu 18.04.5 LTS (x64) / 20.04 LTS (x64) or later VMware ESXi 6.7 Update3 P03 / 7.0 Update1 or later Citrix Hypervisor 8.2.0 or later
Video	Integrated in Aspeed® AST2500 2D Video Graphic Adapter with PCIe bus interface 1920x1200@60Hz 32bpp	Weight	Net Weight: 13 kg / Gross Weight: 22 kg
Storage	10 x 2.5" Gen4 U.2 hot-swappable SSD bays 1 x M.2 slot: M-key, PCIe Gen4 x4 - Supports NGFF-2242/2260/2280/22110 cards	System Fans	8 x 40x40x56mm (23,000rpm)
Expansion Slots	2 x PCIe x16 slot (Gen4 x16), FHHL 1 x OCP 3.0 mezzanine slot (Gen4 x16) - Supported NCSI function 1 x OCP 2.0 mezzanine slot (Gen3 x8) - Supported NCSI function	Operating Properties	Operating temperature: 10°C to 35°C Operating humidity: 8-80% (non-condensing) Non-operating temperature: -40°C to 60°C Non-operating humidity: 20%-95% (non-condensing)
Internal I/O	1 x M.2 slot, 1 x USB 3.0 header, 1 x COM header, 1 x TPM header, 1 x Front panel header, 1 x HDD back plane board header, 1 x PMBus connector, 1 x IPMB connector, 1 x Clear CMOS jumper, 1 x BIOS recovery jumper	Packaging Content	1 x R182-Z93, 2 x CPU heatsinks, 1 x Rail kit
Front I/O	1 x USB 3.0	Reference Numbers	Barebone package: 6NR182Z93MR-00 Rev. A00 Spare parts: - Motherboard: 9MZ92FS1NR-00 Rev. 3.0 - Rail kit: 25HB2-3A0202-K0R - CPU heatsink: 25ST1-44320G-A0R - Back plane board: 9CBP10A5NR-00 - Fan module: 25ST2-44562G-D0R - NVMe HBA_CNVP141: 9CNVP142NR-00 - Power supply: 25EP0-212007-F3S

* All specifications are subject to change without notice. Please visit our website for the latest information.

* AMD, and the AMD Arrow logo, AMD EPYC, AMD Radeon Instinct and combinations thereof are trademarks of Advanced Micro Devices, Inc.

