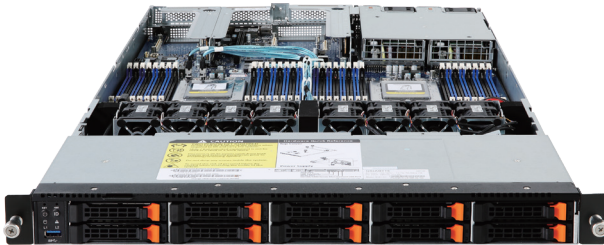
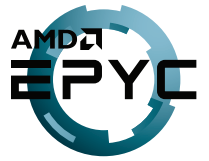


R181-Z92

Rack Server - 1U DP 10-Bay NVMe

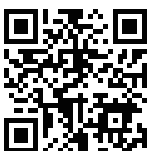


Features

- Dual AMD EPYC™ 7003 Series processors
- 8-Channel RDIMM/LRDIMM DDR4 per processor, 32 x DIMMs
- 2 x 1Gb/s LAN ports (Intel® I350-AM2)
- 1 x Dedicated management port
- 10 x 2.5" NVMe hot-swappable SSD bays
- Ultra-Fast M.2 with PCIe Gen3 x4 interface
- 2 x low profile PCIe Gen3 expansion slots
- 2 x OCP Gen3 x16 mezzanine slots
- Aspeed® AST2500 remote management controller
- 1+1 1200W 80 PLUS Platinum redundant power supply

Specification

Dimensions	1U (W438 x H43.5 x D710 mm)	Backplane I/O	Backplane P/N: 9CBP10A3NR-00 Speed and bandwidth: 10 x ports for PCIe x4
Motherboard	MZ91-FS0 Rev. 3.0	TPM	1 x TPM header with LPC interface Optional TPM2.0 kit: CTM000
CPU	AMD EPYC™ 7003 Series processors Dual processors, 7nm technology, Socket SP3 Up to 64-core, 128 threads per processor TDP up to 225W, cTDP up to 240W, Fully support 280W Compatible with AMD EPYC™ 7002 Series processors	Power Supply	2 x 1200W 80 PLUS Platinum redundant power supply AC Input: 100-240V
Chipset	System on Chip	System Management	Aspeed® AST2500 management controller GIGABYTE Management Console (AMI MegaRAC SP-X)
Memory	8-Channel DDR4 memory, 32 x DIMM slots RDIMM/LRDIMM modules up to 128GB supported 3DS RDIMM/LRDIMM modules up to 256GB supported Memory speed: Up to 3200/2933 MHz	OS Compatibility	Windows Server 2016 / 2019 RHEL 8.3 (x64) or later SLES 12 SP5 (x64) / 15 SP2 (x64) or later Ubuntu 18.04.5 LTS (x64) / 20.04 LTS (x64) or later VMware ESXi 6.7 Update3 P03 / 7.0 Update1 or later Citrix Hypervisor 8.2.0 or later
LAN	2 x 1GbE LAN ports (1 x Intel® I350-AM2) 1 x 10/100/1000 management LAN	System Fans	8 x 40x40x56mm (23'000rpm)
Video	Integrated in Aspeed® AST2500 2D Video Graphic Adapter with PCIe bus interface 1920x1200@60Hz 32bpp	Operating Properties	Operating temperature: 10°C to 35°C Operating humidity: 8-80% (non-condensing) Non-operating temperature: -40°C to 60°C Non-operating humidity: 20%-95% (non-condensing)
Storage	10 x 2.5" NVMe hot-swappable SSD bays	Packaging Content	1 x R181-Z92, 2 x CPU heatsinks, 1 x Rail kit
Expansion Slots	1 x PCIe x16 slot (Gen3 x16), Low profile half-length 1 x PCIe x8 slot (Gen3 x8), Low profile half-length 2 x OCP 2.0 mezzanine slots (Gen3 x16) 1 x M.2 slot (Gen3 x4)	Reference Numbers	Barebone package: 6NR181Z92MR-00 Rev. B00 - Motherboard: 9MZ91FS0NR-00 Rev. 3.0 - Rail kit: 25HB2-3A0202-K0R - CPU heatsink: 25ST1-15320D-J1R - Power supply: 25EP0-212002-F3S
Front I/O	1 x USB 3.0		
Rear I/O	2 x USB 3.0, 1 x VGA, 1 x COM (RJ45), 2 x RJ45, 1 x MLAN		



Learn more about GIGABYTE server solutions, visit www.gigabyte.com/Enterprise

* All specifications are subject to change without notice. Please visit our website for the latest information.

* AMD, and the AMD Arrow logo, AMD EPYC and combinations thereof are trademarks of Advanced Micro Devices, Inc.

* All other brands, logos and names are property of their respective owners.

© 2021 GIGABYTE Technology Co., Ltd. All rights reserved.