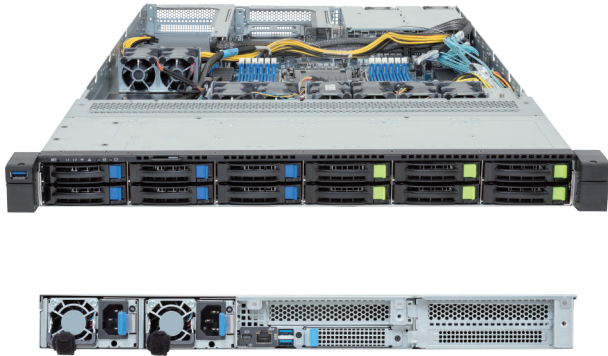


# R164-AG2-AAV1

Rack Server - 1U UP 1 x PCIe Gen5 GPU



## Key Features

- Supports 1 x Dual slot Gen5 GPU
- Single Intel® Xeon® 6 Processors, LGA 7529
- 12-Channel DDR5 RDIMM / MCR DIMM, 12 x DIMMs
- Dual ROM Architecture
- 6 x 2.5" Gen5 NVMe/SATA/SAS-4 hot-swap bays
- 6 x 2.5" SATA/SAS-4 hot-swap bays
- 2 x M.2 slots with PCIe Gen5 x2 interface
- 1 x FHFL PCIe Gen5 x16 slot for GPUs
- 1 x FHFL PCIe Gen5 x16 slot
- 1 x FHHL PCIe Gen5 x16 slot
- 1 x OCP NIC 3.0 PCIe Gen5 x16 slot
- 2 x 2000W 80 PLUS Titanium redundant power supply

## Application

AI, AI Inference, Visual Computing, Networking, Hybrid/Private Cloud...

## Specification

<b>Dimensions</b>	1U (W438 x H43.5 x D815 mm)	<b>I/O Ports</b>	Front: 1 x USB 3.2 Gen1 Rear: 2 x USB 3.2 Gen1, 1 x Mini-DP, 1 x MLAN
<b>Motherboard</b>	MAG4-GU0	<b>Backplane Board</b>	Gen5 NVMe or SATA 6Gb/s or SAS-4 24Gb/s
<b>CPU</b>	Intel® Xeon® 6 Processors - Intel® Xeon® 6900-Series Processors Single processor, TDP up to 500W	<b>Security Modules</b>	1 x TPM header with SPI interface - Optional TPM2.0 kit: CTM012 1 x PProT module connector (only enabled on RoT SKU)
<b>Socket</b>	1 x LGA 7529 (Socket BR)	<b>Power Supply</b>	2 x 2000W 80 PLUS Titanium redundant power supply AC Input: 100-240V
<b>Chipset</b>	System on Chip	<b>System Management</b>	ASPEED® AST2600 management controller GIGABYTE Management Console (AMI MegaRAC SP-X)
<b>Memory</b>	12-Channel DDR5 RDIMM / MCR DIMM*, 12 x DIMM slots RDIMM: Up to 6400 MT/s MCR DIMM: Up to 8000 MT/s *MCR DIMMs are only supported with Intel Xeon 6 CPU with P-cores.	<b>System Fans</b>	2 x 40x40x56mm (32,000rpm) 6 x 40x40x56mm (38,000rpm)
<b>LAN</b>	1 x 10/100/1000 Mbps Management LAN	<b>Operating Properties</b>	Operating temperature: 10°C to 30°C Operating humidity: 8%-80% (non-condensing) Non-operating temperature: -40°C to 60°C Non-operating humidity: 20%-95% (non-condensing)
<b>Video</b>	Integrated in ASPEED® AST2600 - 1 x Mini-DP	<b>Packaging Content</b>	1 x R164-AG2-AAJ1 1 x CPU heatsink 1 x Mini-DP to D-Sub cable 1 x GPU power cable (12VHPWR, 550mm) 1 x Carrier 1 x 2-Section Rail kit
<b>Storage</b>	Front hot-swap: 6 x 2.5" Gen5 NVMe/SATA/SAS4* + 6 x 2.5" SATA/SAS4* *SAS card is required to support SAS drives.  Internal M.2: 1 x M.2 (2280/22110), PCIe Gen5 x2 1 x M.2 (2280/22110), PCIe Gen5 x2, shared with SATA	<b>Part Numbers</b>	Barebone package: 6NR164AG2DR000AAJ1* Optional parts: - 3-Section Rail kit (Supports CMA): 25HB2-A56121-K0R - Cable Management Arm: 25HB1-R18300-K0R
<b>RAID</b>	Require RAID add-in cards Onboard VROC key header		
<b>Expansion Slots</b>	1 x FHFL PCIe Gen5 x16 slot for GPUs 1 x FHFL PCIe Gen5 x16 slot 1 x FHHL PCIe Gen5 x16 slot 1 x OCP NIC 3.0 PCIe Gen5 x16 slot (supports NCSI function)		



Learn more at <https://www.GIGABYTE.com/enterprise>

\* All specifications are subject to change without notice. Please visit our website for the latest information.  
\* Intel, the Intel logo, Xeon, and other Intel marks are trademarks of Intel Corporation or its subsidiaries.  
\* All other brands, logos and names are property of their respective owners.

© 2024 Giga Computing Technology Co., Ltd. All rights reserved.

Designed by

