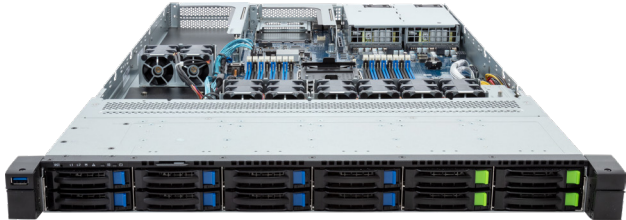


R163-SG2-AAC1

1U UP Gen5 GPU 12-Bay Gen5 NVMe/SATA/SAS4



Features

- Supports 1 x dual-slot Gen5 GPU card
- 4th Gen Intel® Xeon® Scalable Processors
- Intel® Xeon® CPU Max Series
- 8-Channel RDIMM DDR5, 16 x DIMMs
- Dual ROM Architecture
- 1 x dedicated management port
- 4 x 2.5" Gen5 NVMe/SATA/SAS4 hot-swap bays
- 8 x 2.5" SATA/SAS4 hot-swappable bays
- 1 x M.2 slot with PCIe Gen3 x4 interface
- 1 x FHFL PCIe Gen5 x16 slot for GPUs
- 1 x FHFL PCIe Gen5 x16 slot
- 1 x FHHL PCIe Gen5 x16 slot
- 1 x OCP 3.0 Gen5 x16 slot
- Dual 1300W 80+ Platinum redundant power supply

Specification

Dimensions	1U (W438 x H43.5 x D815 mm)	Front I/O	1 x USB 3.2 Gen1
Motherboard	MSG3-GU0	Rear I/O	2 x USB 3.2 Gen1, 1 x Mini-DP, 1 x MLAN
CPU	4th Generation Intel® Xeon® Scalable Processors Intel® Xeon® CPU Max Series Intel® Xeon® Platinum Processor, Intel® Xeon® Gold Processor, Intel® Xeon® Silver Processor CPU TDP up to 350W	Backplane I/O	PCIe Gen5 x4 or SATA 6Gb/s or SAS4 24Gb/s
Socket	1 x LGA 4677 (Socket E)	TPM	1 x TPM header with SPI interface (Optional TPM2.0 kit: CTM010)
Chipset	Intel® C741 Chipset	Power Supply	Dual 1300W 80 PLUS Platinum redundant power supply AC Input: 100-240V
Memory	8-Channel DDR5 memory, 16 x DIMM slots RDIMM modules up to 128GB supported 3DS RDIMM modules up to 256GB supported Memory speed: Up to 4800 MHz (1DPC), 4400 MHz (2DPC)	System Management	Aspeed® AST2600 management controller GIGABYTE Management Console (AMI MegaRAC SP-X)
LAN	1 x 10/100/1000 management LAN	OS Compatibility	Windows Server 2019 / 2011 RHEL 8.6 / 8.7 / 9.0 / 9.1 / 9.2 (x64) SLES 15 SP4 (x64) Ubuntu 22.04 LTS / 22.04.1 LTS / 22.04.2 LTS (x64) VMware ESXi 7.0 Update 3i / 8.0 / 8.0 Update 1 Citrix Hypervisor 8.2 LTSR CU1
Video	Integrated in Aspeed AST2600 2D Video Graphic Adapter with PCIe bus interface 1920x1200@60Hz 32bpp, DDR4 SDRAM	System Fans	8 x 40x40x56mm (32,000rpm)
Storage	4 x 2.5" Gen5 NVMe/SATA/SAS4 hot-swappable bays 8 x 2.5" SATA/SAS4 hot-swappable bays SAS card is required for SAS devices support	Operating Properties	Operating temperature: 10°C to 35°C Operating humidity: 8-80% (non-condensing) Non-operating temperature: -40°C to 60°C Non-operating humidity: 20%-95% (non-condensing)
RAID	Intel® SATA RAID 0/1/10/5	Packaging Content	1 x R163-SG2, 1 x CPU heatsink, 1 x Mini-DP to D-Sub cable, 3 x Carrier clips, 1 x 2-Section Rail kit
Expansion Slots	1 x PCIe Gen5 x16 FHFL slot, for GPUs 1 x PCIe Gen5 x16 FHFL slot (occupied when dual-slot GPU is installed) 1 x PCIe Gen5 x16 FHHL slot 1 x OCP 3.0 Gen5 x16 slot (Supports NCSI function) 1 x M.2 slot (M-key, PCIe Gen3 x4, NGFF-2280/22110)	Reference Numbers	Barebone package: 6NR163SG2DR000AAC1* - Motherboard: 9MSG3GU0UR-000 - 2-Section Rail kit: 25HB2-3A0206-K0R - CPU heatsink: 25ST1-4Z3200-S7R - Mini-DP to D-Sub cable: 25CRN-200801-K1R - Power supply: 25EP0-213004-F3S



Learn more about GIGABYTE server, visit <https://www.gigacomputing.com>

* All specifications are subject to change without notice. Please visit our website for the latest information.
* Intel, the Intel logo, Xeon, and other Intel marks are trademarks of Intel Corporation or its subsidiaries.
* All other brands, logos and names are property of their respective owners.

© 2023 Giga Computing Technology Co., Ltd. All rights reserved.

Engineered by

