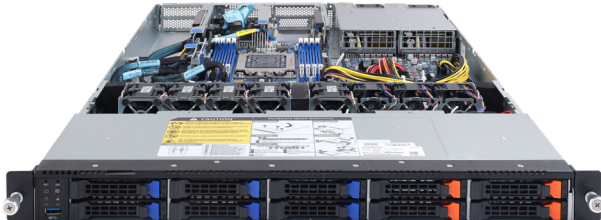
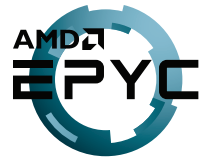


# R162-Z11

Rack Server - 1U UP 10-Bay



## Features

- Compatible with 3 x Low-profile PCIe GPU cards
- Supports GRAID SupremeRAID SR-1000 NVMe RAID card
- Single AMD EPYC™ 7002 Series processors
- 8-Channel RDIMM/LRDIMM DDR4, 8 x DIMMs
- 2 x 1Gb/s LAN ports (Intel® I350-AM2)
- 1 x Dedicated management port
- 6 x 2.5" SATA and 4 x 2.5 U.2 hot-swap HDD/SSD bays
- Ultra-Fast M.2 with PCIe Gen3 x4 interface
- 3 x PCIe x16 expansion slots
- 1 x OCP 2.0 Gen3 x16 mezzanine slots
- Aspeed® AST2500 remote management controller
- 1200W (240V) 80 PLUS Platinum redundant power supply

## Specification

<b>Dimensions</b>	1U (W438 x H43.5 x D730 mm)	<b>Backplane I/O</b>	Backplane P/N: 9CBP10A1NR-00 Speed and bandwidth: 10 x ports for PCIe x4
<b>Motherboard</b>	MZ12-HD2	<b>TPM</b>	1 x TPM header with SPI interface Optional TPM2.0 kit: CTM010
<b>CPU</b>	AMD EPYC™ 7002 Series processors Single processor, 7nm technology, cTDP up to 240W Up to 64-core, 128 threads per processor Compatible with AMD EPYC™ 7001 Series processors	<b>Power Supply</b>	Dual 1200W (240V) 80 PLUS Platinum redundant power supply
<b>Chipset</b>	System on Chip	<b>System Management</b>	Aspeed® AST2500 management controller GIGABYTE Management Console (AMI MegaRAC SP-X)
<b>Memory</b>	8-Channel DDR4 memory, 8 x DIMM slots RDIMM/LRDIMM modules up to 128GB supported 3DS RDIMM/LRDIMM modules up to 256GB supported Memory speed: Up to 3200 MHz	<b>OS Compatibility</b>	Windows Server 2016 (X2APIC/256T not supported) / 2019 RHEL 7.6 / 8.0 or later SLES 12 SP4 / 15 SP1 or later Ubuntu 16.04.6 LTS / 8.04.3 LTS / 20.04 LTS or later VMware ESXi 6.5 EP15 / 6.7 Update3 / 7.0 or later Citrix Hypervisor 8.1.0 or later
<b>LAN</b>	2 x 1GbE LAN ports (1 x Intel® I350-AM2) 1 x 10/100/1000 management LAN	<b>System Fans</b>	5 x 40x40x56mm (23'000rpm), 3 x 40x40x28mm (18'000rpm)
<b>Video</b>	Integrated in Aspeed® AST2500 2D Video Graphic Adapter with PCIe bus interface 1920x1200@60Hz 32bpp	<b>Operating Properties</b>	Operating temperature: 10°C to 35°C Operating humidity: 8-80% (non-condensing) Non-operating temperature: -40°C to 60°C Non-operating humidity: 20%-95% (non-condensing) Ambient temperature limited to 30°C if using 280W CPU
<b>Storage</b>	6 x 2.5" SATA/SAS hot-swappable HDD/SSD bays 4 x 2.5" U.2 hot-swappable SSD bays SAS card is required for SAS devices support	<b>Packaging Content</b>	1 x R162-Z11, 1 x CPU heatsink, 1 x Rail kit
<b>RAID</b>	N/A	<b>Reference Numbers</b>	Barebone package: 6NR162Z11MR-00 - Motherboard: 9MZ12HD2NR-00 - Rail kit: 25HB2-3A0202-K0R - CPU heatsink: 25ST1-44320M-A3R - Power supply: 25EP0-212002-F3S - GRAID SupremeRAID Core Software Module License (optional): 25FC1-SRBUN1-AFS (4-native NVMe RAID) 25FC1-SRBUN2-AFS (8-native NVMe RAID) 25FC1-SRBUN3-AFS (12-native NVMe RAID)
<b>Expansion Slots</b>	1 x PCIe x16 (Gen4 x16) slot, LPHL 2 x PCIe x16 (Gen3 x16) slots, LPHL 1 x OCP 2.0 mezzanine slot with PCIe Gen3 x16 bandwidth 1 x onboard M.2 slot (PCIe Gen3 x4, M-key)		
<b>Front I/O</b>	1 x USB 3.0		
<b>Rear I/O</b>	3 x USB 3.0, 1 x VGA, 2 x RJ45, 1 x MLAN		



Learn more about GIGABYTE server solutions, visit [www.gigabyte.com/Enterprise](http://www.gigabyte.com/Enterprise)

\* All specifications are subject to change without notice. Please visit our website for the latest information.

\* AMD, and the AMD Arrow logo, AMD EPYC and combinations thereof are trademarks of Advanced Micro Devices, Inc.

\* All other brands, logos and names are property of their respective owners.

© 2021 GIGABYTE Technology Co., Ltd. All rights reserved.