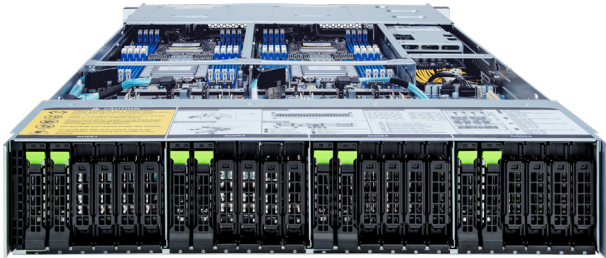
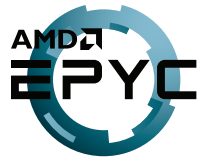


H262-Z6B-ICU1

AMD DP 2U 4 Nodes Immersion Server

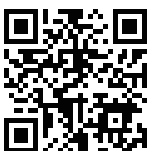


Features

- Single-Phase Immersion Ready Server
- Hardware-level root of trust support
- 2U - 4 nodes rear access server system
- Dual AMD EPYC™ 7003 Series processors
- 8-Channel RDIMM/LRDIMM DDR4, 64 x DIMMs
- 8 x 1Gb/s LAN ports
- 4 x MLAN and 1 x CMC management ports
- 8 x 2.5" Gen4 U.2 hot-swappable SSD bays
- 4 x M.2 with PCIe Gen4 x4 interface
- 8 x PCIe Gen4 x16 low-profile expansion slots
- 4 x OCP 3.0 Gen4 x16 mezzanine slots
- 2200W (240V) 80 PLUS Platinum redundant PSU

Specification

Dimensions	2U 4 Nodes - Rear access (W440 x H87.5 x D840 mm)	Backplane I/O	8 x ports Speed and bandwidth: SATA 6Gb/s or SAS 12Gb/s or PCIe Gen4 x4
Motherboard	MZ62-HD4 Rev. 3.0	TPM	1 x TPM header with SPI (Optional TPM2.0 kit: CTM010)
CPU	AMD EPYC™ 7003 Series processors Dual processors, 7nm technology TDP up to 225W, cTDP up to 240W; Conditional support 280W Compatible with AMD EPYC™ 7002 Series processors 8 x LGA 4094 Socket SP3	Power Supply	Dual 2200W 80 PLUS Platinum power supply AC Input: 100-240V
Chipset	System on Chip	System Management	Aspeed® AST2500 management controller GIGABYTE Management Console (AMI MegaRAC SP-X)
Memory	Total 64 x DIMM slots (16 x DIMM slots per node) 8-Channel DDR4 memory, up to 3200 MHz RDIMM/LRDIMM modules up to 128GB supported 3DS RDIMM/LRDIMM modules up to 256GB supported	OS Compatibility	Windows Server 2016 / 2019 / 2022 RHEL 8.3 / 9 (x64) or later SLES 12 SP5 / 15 SP2 (x64) or later Ubuntu 18.04.5 LTS / 20.04 LTS / 22.04 LTS (x64) or later VMware ESXi 6.7 Update3 P03 / 7.0 Update1 or later Citrix Hypervisor 8.2.0 or later
LAN	8 x 1GbE LAN ports (1 x Intel® I350-AM2) 4 x Dedicated management ports 1 x 10/100/1000 CMC global management port	Operating Properties	Non-operating temperature: -40°C to 60°C Non-operating humidity: 20%-95% (non-condensing)
Video	Integrated in Aspeed® AST2500 2D Video Graphic Adapter with PCIe bus interface 1920x1200@60Hz 32bpp, DDR4 SDRAM	Packaging Content	1 x H262-Z6B 8 x CPU heatsinks
Storage	8 x 2.5" Gen4 U.2 hot-swappable SSD bays All storage bays are compatible with SATA devices	Reference Numbers	Barebone: 6NH262Z6BRR000ICU1* - Motherboard: 9MZ62HD4NR-00 - CPU heatsink: 25ST1-44320H-A0R/25ST1-44320I-A0R - M.2 extension card: 9CMTPO61NR-00 (in option) - Back plane board: 9CBPH080NR-00 - Power Supply: 25EPO-22200C-D0S - C19 power cord 125V/15A (US): 25CP1-018000-Q0R (in option) - C19 power cord 250V/16A (EU): 25CP3-01830H-Q0R (in option) - Ring topology kit: 6NH262Z65SR-00-100 (in option)
Expansion Slots	8 x PCIe Gen4 x16 low-profile slots 4 x OCP 3.0 mezzanine slot (Gen4 x16) 4 x M.2 slots (M-key, PCIe Gen4 x4, supports NGFF-2280/22110)		
Rear I/O	8 x USB 3.2 Gen1, 4 x Mini-DP, 8 x RJ45, 4 x MLAN, 1 x CMC		



Learn more about GIGABYTE server solutions, visit www.gigabyte.com/Enterprise

* All specifications are subject to change without notice. Please visit our website for the latest information.

* AMD, and the AMD Arrow logo, AMD EPYC and combinations thereof are trademarks of Advanced Micro Devices, Inc.

* All other brands, logos and names are property of their respective owners.

© 2022 GIGABYTE Technology Co., Ltd. All rights reserved.