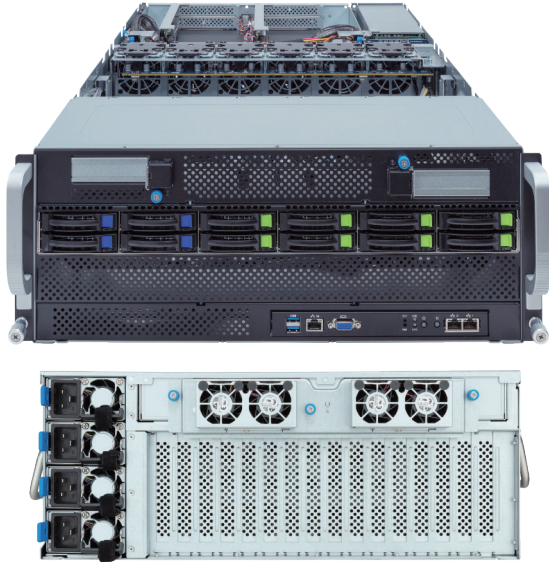


G493-ZB1-AAP1

HPC/AI Server - 4U DP 10 x PCIe Gen5 GPUs



Key Features

- NVIDIA-Certified Systems™ - Data Center Servers
- Supports up to 10 x Dual slot Gen5 GPUs
- Dual AMD EPYC™ 9005/9004 Series Processors
- 12-Channel DDR5 RDIMM, 48 x DIMMs
- Dual ROM Architecture
- 2 x 1Gb/s LAN ports via Intel® I350-AM2
- 8 x 2.5" Gen5 NVMe/SATA/SAS-4 hot-swap bays
- 4 x 2.5" SATA/SAS-4 hot-swap bays
- 2 x M.2 slots with PCIe Gen3 x4 interface
- 10 x FHFL PCIe Gen5 x16 slots for GPUs
- 2 x LP PCIe Gen5 x16 slots on the front side
- 3+1 3000W 80 PLUS Titanium redundant power supplies

Application

AI, AI Training, AI Inference, Visual Computing, HPC

Specification

Dimensions	4U (W448 x H176 x D880 mm)	RAID	Require RAID add-in cards
Motherboard	MZB3-G41	I/O Ports	Front: 2 x USB 3.2 Gen1, 1 x VGA, 2 x RJ45, 1 x MLAN
CPU	AMD EPYC™ 9005 Series Processors AMD EPYC™ 9004 Series Processors Dual processor, cTDP up to 400W - At ambient 25°C, cTDP up to 500W	Backplane Board	PCIe Gen5 x4 or SATA 6Gb/s or SAS-4 24Gb/s
Socket	2 x LGA 6096 (Socket SP5)	Security Modules	1 x TPM header with SPI interface (Optional TPM2.0 kit: CTM010)
Chipset	System on Chip	Power Supply	3+1 3000W 80 PLUS Titanium redundant power supplies AC Input: 100-240V The system power supply requires C19 power cord.
Memory	12-Channel DDR5 RDIMM, 48 x DIMMs [EPYC 9005] Up to 5200 MT/s (1DPC), 4400 MT/s (1R 2DPC), 4000 MT/s (2R 2DPC) [EPYC 9004] Up to 4800 MT/s (1DPC), 3600 MT/s (2DPC)	System Management	ASPEED® AST2600 Baseboard Management Controller GIGABYTE Management Console web interface
LAN	2 x 1Gb/s LAN (1 x Intel® I350-AM2) - Supports NCSI 1 x 10/100/1000 Mbps Management LAN	OS Support	Windows Server, Red Hat Enterprise Linux server, Ubuntu, SUSE Linux Enterprise server, VMware ESXi, Citrix Hypervisor
Video	Integrated in ASPEED® AST2600 - 1 x VGA port	System Fans	4 x 40x40x28mm (25,000rpm), 12 x 60x60x38mm (23,000rpm)
Storage	Front hot-swap: 8 x 2.5" Gen5 NVMe/SATA/SAS-4 4 x 2.5" SATA/SAS-4 SAS card is required to support SAS drives. Internal M.2: 2 x M.2 (2280/22110), PCIe Gen3 x4	Operating Properties	Operating temperature: 10°C to 35°C Operating humidity: 8%-80% (non-condensing) Non-operating temperature: -40°C to 60°C Non-operating humidity: 20%-95% (non-condensing)
Expansion Slots	10 x FHFL PCIe Gen5 x16 slots for GPUs (with PCIe switches) 2 x LP PCIe Gen5 x16 slots on the front side The system is validated for use with a single GPU model.	Packaging Content	1 x G493-ZB1-AAP1, 2 x CPU fansinks, 1 x L-shape Rail kit, 10 x GPU power cables Packaging Dimensions: 1200 x 800 x 444 mm w/ pallet
		Part Numbers	Barebone package: 6NG493ZB1DR000ACP1* Optional parts: - C19 power cord 125V/15A (US): 25CP1-018000-Q0R - C19 power cord 250V/16A (EU): 25CP3-01830H-Q0R - C19 power cord 125V/15A (JP): 25CPA-01830B-Q0R - RMA packaging: 6NG493ZB1SR-RMA-A100



Learn more at <https://www.GIGABYTE.com/enterprise>

- * All specifications are subject to change without notice. Please visit our website for the latest information.
- * AMD, the AMD Arrow logo, EPYC and combinations thereof are trademarks of Advanced Micro Devices, Inc.
- * All other brands, logos and names are property of their respective owners.

© 2024 Giga Computing Technology Co., Ltd. All rights reserved.

Designed by

