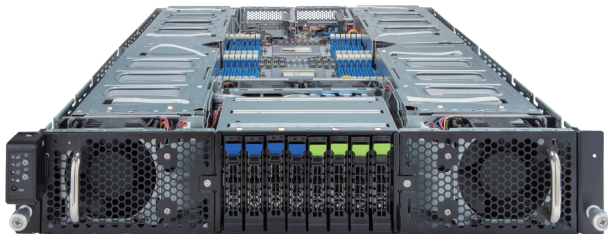


# G293-Z42-AAP1

HPC/AI Server - 2U DP 8 x PCIe Gen5 GPUs



## Key Features

- NVIDIA-Certified Systems™ - Data Center Servers
- Supports up to 8 x Dual slot Gen5 GPUs
- Dual AMD EPYC™ 9005/9004 Series Processors
- 12-Channel DDR5 RDIMM, 24 x DIMMs
- Dual ROM Architecture
- 2 x 10Gb/s LAN ports via Broadcom® BCM57416
- 4 x 2.5" Gen5 NVMe/SATA/SAS hot-swap bays
- 4 x 2.5" SATA/SAS hot-swap bays
- 8 x FHFL PCIe Gen5 x16 slots for GPUs
- 2 x LP PCIe Gen5 x16 slots for add-in cards
- Dual 3000W 80 PLUS Titanium redundant power supply

## Application

AI, AI Training, AI Inference, HPC

## Specification

<b>Dimensions</b>	2U (W448 x H87.5 x D800 mm)	<b>Rear I/O Ports</b>	2 x USB 3.2 Gen1, 1 x VGA, 2 x RJ45, 1 x MLAN
<b>Motherboard</b>	MZ43-G20	<b>Backplane Board</b>	Speed and bandwidth: PCIe Gen5 x4 or SATA 6Gb/s or SAS 12Gb/s
<b>CPU</b>	AMD EPYC™ 9005 Series Processors AMD EPYC™ 9004 Series Processors Dual processor, TDP up to 210W - At ambient 30°C, cTDP up to 240W	<b>Security Modules</b>	1 x TPM header with SPI interface (Optional TPM2.0 kit: CTM010)
<b>Socket</b>	2 x LGA 6096 (Socket SP5)	<b>Power Supply</b>	Dual 3000W 80 PLUS Titanium redundant power supply AC Input: 100-240V The system power supply requires C19 power cord.
<b>Chipset</b>	System on Chip	<b>System Management</b>	ASPEED® AST2600 Baseboard Management Controller GIGABYTE Management Console web interface
<b>Memory</b>	12-Channel DDR5 RDIMM, 24 x DIMMs [EPYC 9005] Up to 6000 MT/s [EPYC 9004] Up to 4800 MT/s	<b>OS Support</b>	Windows Server, Red Hat Enterprise Linux server, Ubuntu, SUSE Linux Enterprise server, VMware ESXi, Citrix Hypervisor
<b>LAN</b>	2 x 10Gb/s LAN (1 x Broadcom® BCM57416) - Supports NCSI 1 x 10/100/1000 Mbps Management LAN	<b>System Fans</b>	8 x 80x80x38mm (18,300rpm)
<b>Video</b>	Integrated in ASPEED® AST2600 - 1 x VGA port	<b>Operating Properties</b>	Operating temperature: 10°C to 35°C Operating humidity: 8%-80% (non-condensing) Non-operating temperature: -40°C to 60°C Non-operating humidity: 20%-95% (non-condensing)
<b>Storage</b>	Front hot-swap: 4 x 2.5" Gen5 NVMe/SATA/SAS 4 x 2.5" SATA/SAS *SAS card is required to support SAS drives.	<b>Packaging Content</b>	1 x G293-Z42-AAP1, 2 x CPU heatsinks, 1 x L-shape Rail kit, 8 x GPU power cables Packaging Dimensions: 1133 x 724 x 261 mm
<b>RAID</b>	Require RAID add-in cards	<b>Part Numbers</b>	Barebone package: 6NG293Z42DR000ACP1* Optional parts: - C19 power cord 125V/15A (US): 25CP1-018000-Q0R - C19 power cord 250V/16A (EU): 25CP3-01830H-Q0R - C19 power cord 125V/15A (JP): 25CPA-01830B-Q0R - RMA packaging: 6NG293Z42SR-RMA-A100
<b>Expansion Slots</b>	8 x FHFL PCIe Gen5 x16 slots for GPUs 2 x LP PCIe Gen5 x16 slots for add-in cards Maximum GPU dimensions (LxWxH): 285 x 111.5 x 39.5mm. The system is validated for use with a single GPU model.		



Learn more at <https://www.GIGABYTE.com/enterprise>

\* All specifications are subject to change without notice. Please visit our website for the latest information.  
\* AMD, the AMD Arrow logo, EPYC and combinations thereof are trademarks of Advanced Micro Devices, Inc.  
\* All other brands, logos and names are property of their respective owners.

© 2024 Giga Computing Technology Co., Ltd. All rights reserved.

Designed by

