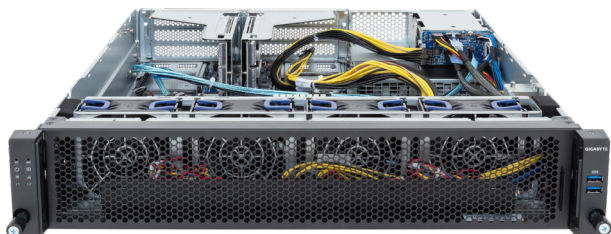


E264-S30-AAJ1

Edge Server - 2U UP 2 x PCIe Gen5 GPUs



Key Features

- Supports 2 x Dual-slot Gen5 GPU cards
- Single Intel® Xeon® 6 Processors, LGA 4710
- 8-Channel DDR5 RDIMM / MCR DIMM, 16 x DIMMs
- Dual ROM Architecture
- 1 x 1Gb/s LAN port via Intel® I210-AT
- 2 x 2.5" Gen5 NVMe/SATA/SAS-4 hot-swappable bays
- 1 x M.2 slot with PCIe Gen5 x2 interface
- 1 x M.2 slot with PCIe Gen5 x2 interface, shared with SATA support
- 2 x FHFL PCIe Gen5 x16 slots for GPUs
- 2 x OCP 3.0 Gen5 x16 slots
- 1+1 2000W 80 PLUS Titanium redundant power supplies

Application

AI, AI Inference, AI Training, Visual Computing, High-Performance Computing, Networking, Edge, Hybrid/Private Cloud Server...

Specification

Dimensions 2U (W438 x H87.5 x D710 mm)

Motherboard MS34-DC0

CPU Intel® Xeon® 6 Processors
 - Intel® Xeon® 6700E-Series Processors
 - Intel® Xeon® 6700P-Series Processors
 - Intel® Xeon® 6500P-Series Processors
 Single processor, TDP up to 350W

Sock 1 x LGA 4710 (Socket E2)

Chipset System on Chip

Memory 8-Channel DDR5 RDIMM / MCR DIMM*, 16 x DIMM slots
 RDIMM: Up to 6400 MT/s (1DPC), 5200 MT/s (2DPC)
 MCR DIMM: Up to 8000 MT/s
 *MCR DIMMs are only supported with Intel Xeon 6 Processors with P-cores and in a 1DPC configuration.

LAN 1 x 1Gb/s LAN port (1 x Intel® I210-AT) - supports NCSI function
 1 x 10/100/1000 Mbps Management LAN

Video Integrated in ASPEED® AST2600
 2D Video Graphic Adapter with PCIe bus interface
 1920x1200@60Hz 32bpp

Storage 2 x 2.5" Gen5 NVMe/SATA/SAS-4* hot-swappable bays
 *SAS card is required to support SAS drives.

RAID Require RAID add-in cards

Expansion Slots 2 x FHFL PCIe Gen5 x16 slots for GPUs
 2 x OCP 3.0 Gen5 x16 slots (supports NCSI function)
 2 x M.2 slots (M-key, PCIe Gen5 x2, support 2280/22110 cards)
 - 1 x M.2 slot is shared with SATA support

I/O Ports Front: 2 x USB 3.2 Gen1
 Rear: 2 x USB 3.2 Gen1, 1 x Mini-DP, 1 x RJ45, 1 x MLAN
 Internal: 1 x TPM header, 1 x PRoT connector, 1 x VROC connector

Backplane Board PCIe Gen5 x4 or SATA 6Gb/s or SAS-4 24Gb/s

Security Modules 1 x TPM header with SPI interface
 - Optional TPM2.0 kit: CTM012
 1 x PRoT module connector (M.2 M-key)
 - Optional PRoT module (AST1060 solution): CSC1200

Power Supply 1+1 2000W 80 PLUS Titanium redundant power supplies
 AC Input: 100-240V

System Management ASPEED® AST2600 management controller
 GIGABYTE Management Console (AMI MegaRAC SP-X)

System Fans 4 x 80x80x38mm (18,300rpm)

Operating Properties Operating temperature: 10°C to 35°C
 Operating humidity: 8%-80% (non-condensing)
 Non-operating temperature: -40°C to 60°C
 Non-operating humidity: 20%-95% (non-condensing)

Packaging Content 1 x E264-S30-AAJ1, 1 x CPU heatsink, 1 x Mini-DP to D-Sub cable, 2 x Carriers, 1 x GPU power cable (12VHPWR, 350mm), 1 x GPU power cable (12VHPWR, 550mm)

Part Numbers Barebone package: 6NE264S30DR000AAJ1*
 - CPU heatsink: 25ST1-4Z3200-S7R
 - Mini-DP to D-Sub cable: 25CRN-200801-K1R
 - GPU power cable (12VHPWR, 350mm): 25CRI-350006-Y4R
 - GPU power cable (12VHPWR, 550mm): 25CRI-550107-Y4R
 - Power supply: 25EP0-22000J-G1S
 - 2-Section Rail kit (385-480mm): 25HB2-3A0204-K0R (optional)
 - 2-Section Rail kit (660-840mm): 25HB2-3A0203-K0R (optional)



Learn more about GIGABYTE server at <https://www.gigabyte.com/Enterprise>

* All specifications are subject to change without notice. Please visit our website for the latest information.
 * Intel, the Intel logo, Xeon, and other Intel marks are trademarks of Intel Corporation or its subsidiaries.
 * All other brands, logos and names are property of their respective owners.

© 2024 Giga Computing Technology Co., Ltd. All rights reserved.

Designed by

