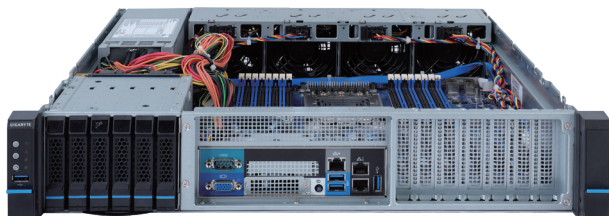


## E252-P31

ARM Server - 2U UP 6-Bay Edge Server



AMPERE®



### Features

- Hardware-level root of trust support
- Single socket Ampere® Altra® Processor
- 8-Channel RDIMM/LRDIMM DDR4, 16 x DIMMs
- 2 x 1Gb/s LAN ports (Intel® I350-AM2)
- 1 x Dedicated management port
- 6 x 2.5" SATA hot-swappable HDD/SSD bays
- 2 x Ultra-Fast M.2 with PCIe Gen4 x4 interface
- 6 x low profile PCIe Gen4 expansion slots
- Aspeed® AST2500 management controller
- 800W 80 PLUS Platinum redundant power supply

### Specification

<b>Dimensions</b>	2U (W439 x H86 x D449 mm)	<b>Backplane I/O</b>	Speed and bandwidth: SATA 6Gb/s
<b>Motherboard</b>	MP32-AR1	<b>TPM</b>	1 x TPM header with SPI interface Optional TPM2.0 kit: CTM010
<b>CPU</b>	Ampere® Altra® Processor Single processor, 7nm technology, LGA4926 socket Up to 80-core per processor	<b>Power Supply</b>	Dual 800W 80 PLUS Platinum redundant power supply AC Input: 100-240V
<b>Chipset</b>	System on Chip	<b>System Management</b>	Aspeed® AST2500 management controller GIGABYTE Management Console (AMI MegaRAC SP-X)
<b>Memory</b>	8-Channel DDR4 memory, 16 x DIMM slots RDIMM/LRDIMM modules up to 256GB supported Up to 4TB of memory capacity supported per processor Memory speed: Up to 3200 MHz NOTE: Only supports configurations with 1, 2, 4, 6, 8, 12, or 16 DIMMs	<b>OS Compatibility</b>	RHEL 8.3 (ARM64) CentOS 8.3-2011 (ARM64) SLES 15 SP2 (ARM64) Ubuntu 18.04.5-server / 20.04.1-legacy-server (ARM64) Fedora Server 33-1.2 (ARM64) FreeBSD 13.0 current (ARM64) OracleLinux R8 U2 (ARM64) Debian 10.9 (Buster) (ARM64)
<b>LAN</b>	2 x 1GbE LAN ports (1 x Intel® I350-AM2) 1 x 10/100/1000 management LAN	<b>System Fans</b>	4 x 80x80x38mm, 2-ball
<b>Video</b>	Integrated in Aspeed® AST2500 2D Video Graphic Adapter with PCIe bus interface 1920x1200@60Hz 32bpp, DDR4 SDRAM	<b>Operating Properties</b>	Operating temperature: 10°C to 35°C Operating humidity: 8-80% (non-condensing) Non-operating temperature: -40°C to 60°C Non-operating humidity: 20%-95% (non-condensing)
<b>Storage</b>	6 x 2.5" SATA hot-swappable HDD/SSD bays from CSTO180 (ASM1164) SATA HBA - SATA device supported only	<b>Packaging Content</b>	1 x E252-P31 system 1 x CPU heatsink 1 x Rail kit (in option)
<b>SAS</b>	N/A	<b>Reference Numbers</b>	Barebone package: 6NE252P31MR-00 - Motherboard: 9MP32AR1NR-00 - CPU heatsink: 25ST1-353109-T1R - OCP type SATA HBA Card: 9CSTO180NR-00
<b>RAID</b>	N/A		
<b>Expansion Slots</b>	2 x PCIe x16 slots (4.0 x16), Low-profile 3 x PCIe x16 slots (4.0 x8), Low-profile 1 x PCIe x8 slot (4.0 x8), Low-profile 2 x M.2 slots (4.0 x4), supports 2242/2260/2280/22110 cards		
<b>Front I/O</b>	4 x USB 3.0, 1 x VGA, 1 x COM, 2 x RJ45, 1 x MLAN		
<b>Rear I/O</b>	N/A		



Learn more about GIGABYTE server solutions, visit [www.gigabyte.com/Enterprise](http://www.gigabyte.com/Enterprise)

\* All specifications are subject to change without notice. Please visit our website for the latest information.

\* Ampere, Altra and Ampere logos are registered trademarks or trademarks of Ampere Computing.

\* All other brands, logos and names are property of their respective owners.

© 2021 GIGABYTE Technology Co., Ltd. All rights reserved.