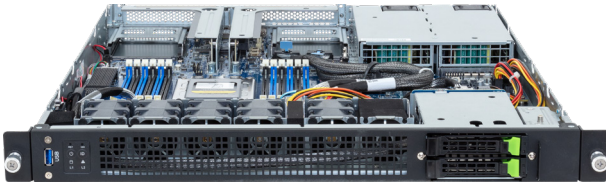


# E143-E30-AAG1

Edge Server - 1U UP 2-Bay Gen5 NVMe/SATA/SAS4



## Features

- AMD EPYC™ 8004 Series processors
- Single processor, 5nm technology
- 6-Channel RDIMM DDR5, 12 x DIMMs
- Dual ROM Architecture
- 1 x 1Gb/s LAN port
- 1 x Dedicated management port
- 2 x 2.5" Gen5 NVMe/SATA/SAS4 hot-swappable bays
- 1 x M.2 slot with PCIe Gen3 x4 interface
- 2 x FHHL PCIe Gen5 x16 slots
- 2 x OCP 3.0 Gen5 x16 slots
- 1+1 850W 80 PLUS Titanium redundant power supplies

## Specification

<b>Dimensions</b>	1U (W438 x H43.5 x D520 mm)	<b>Backplane Board</b>	Speed and bandwidth: PCIe Gen5 x4 or SATA 6Gb/s or SAS4 24Gb/s
<b>Motherboard</b>	ME33-DC0	<b>TPM</b>	1 x TPM header with SPI interface Optional TPM2.0 kit: CTM010
<b>CPU</b>	AMD EPYC™ 8004 Series processors Single processor, 5nm technology cTDP up to 225W	<b>Power Supply</b>	1+1 850W 80 PLUS Titanium redundant power supplies AC Input: 100-240V
<b>Socket</b>	1 x LGA 4844 (Socket SP6)	<b>System Management</b>	Aspeed® AST2600 management controller GIGABYTE Management Console (AMI MegaRAC SP-X)
<b>Chipset</b>	System on Chip	<b>OS Compatibility</b>	Windows Server 2019 / 2022 21H2 RHEL 8.6 / 9.1 (x64) SLES 15 SP4 Ubuntu 20.04.6 / 22.04 LTS (x64) VMware ESXi 8.0 Update 1 Citrix Hypervisor 8.2 LTSR CU1
<b>Memory</b>	12 x DIMM slots 6-Channel DDR5 memory architecture RDIMM modules up to 96GB supported Memory speed: Up to 4800 MHz (1DPC), 3600 MHz (2DPC)	<b>System Fans</b>	5 x 40x40x56mm (30,000rpm)
<b>LAN</b>	1 x 1Gb/s LAN port (Intel I210-AT) - Supports NCSI function 1 x 10/100/1000 Mbps Management LAN	<b>Operating Properties</b>	Operating temperature: 10°C to 35°C Operating humidity: 8-80% (non-condensing) Non-operating temperature: -40°C to 60°C Non-operating humidity: 20%-95% (non-condensing)
<b>Video</b>	Integrated in Aspeed AST2600 2D Video Graphic Adapter with PCIe bus interface 1920x1200@60Hz 32bpp	<b>Packaging Content</b>	1 x E143-E30 1 x CPU heatsink 1 x Mini-DP to D-Sub cable
<b>Storage</b>	2 x 2.5" Gen5 NVMe/SATA/SAS4 hot-swappable bays SAS card is required for SAS devices support	<b>Part Numbers</b>	Barebone package: 6NE143E30DR000AAG1* - Motherboard: 9ME33DC0UR-000 - CPU heatsink: 25ST1-44320G-A0R - Mini-DP to D-Sub cable: 25CRN-200801-K1R - Power supply: 25EP0-208503-D0S - 2-Section Rail kit (385-480mm): 25HB2-3A0204-K0R (optional) - 2-Section Rail kit (660-840mm): 25HB2-3A0203-K0R (optional)
<b>RAID</b>	N/A		
<b>Expansion Slots</b>	2 x FHHL PCIe Gen5 x16 slots 2 x OCP 3.0 Gen5 x16 slots 1 x M.2 slot: M-key, PCIe Gen3 x4, supports 2280/22110 cards		
<b>Front I/O</b>	1 x USB 3.2 Gen1		
<b>Rear I/O</b>	2 x USB 3.2 Gen1, 1 x Mini-DP, 1 x RJ45, 1 x MLAN		



Learn more about GIGABYTE server, visit <https://www.gigacomputing.com>

\* All specifications are subject to change without notice. Please visit our website for the latest information.  
\* AMD, the AMD Arrow logo, EPYC and combinations thereof are trademarks of Advanced Micro Devices, Inc.  
\* All other brands, logos and names are property of their respective owners.

© 2024 Giga Computing Technology Co., Ltd. All rights reserved.

Designed by

