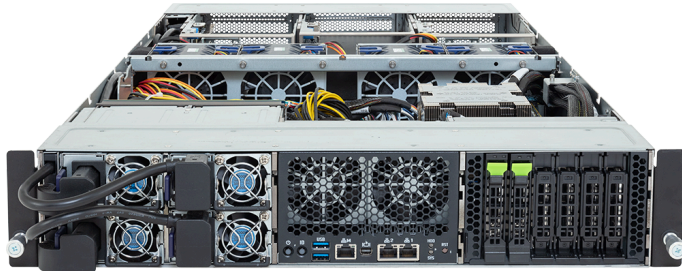


XV23-ZU0-AAJ1

NVIDIA MGX™ Server - 2U UP 4 x PCIe Gen5 GPUs



Key Features

- NVIDIA MGX™ modular server design
- Supports up to 4 x Dual slot Gen5 GPUs
- Supports 4 x NVIDIA H200 NVL PCIe GPUs with 2-way NVLink bridges
- Single AMD EPYC™ 9005/9004 Series Processors
- 12-Channel DDR5 RDIMM, 12 x DIMMs
- Dual ROM Architecture
- 2 x 10Gb/s LAN ports via Intel® X550-AT2
- 2 x 2.5" Gen5 NVMe/SATA/SAS-4 hot-swap bays
- 2 x M.2 slots with PCIe Gen5 x4 interface
- 4 x FHFL PCIe Gen5 x16 slots for GPUs
- 2 x FHFL PCIe Gen5 x16 slots for NVIDIA ConnectX®-7 NICs
- 1 x FHFL PCIe Gen5 x16 slot for NVIDIA BlueField®-3 DPUs
- 4 x 2000W 80 PLUS Titanium redundant power supplies

Specification

Dimensions	2U (W438 x H87 x D900 mm)	PCIe Expansion Slots	4 x FHFL PCIe Gen5 x16, for GPUs 2 x FHFL PCIe Gen5 x16, for NICs 1 x FHFL PCIe Gen5 x16, for DPUs <small>*The system supports 4 x NVIDIA H200 NVL PCIe GPUs at 25°C ambient, arranged as two 2-GPU sets, each with a 2-way NVLink bridge. *The system is only validated with a uniform GPU model.</small>
Motherboard	MZU3-MG0	I/O Ports	Front: 2 x USB 3.2 Gen1, 1 x Mini-DP, 2 x RJ45, 1 x MLAN
CPU	AMD EPYC™ 9005 Series Processors AMD EPYC™ 9004 Series Processors Single processor, cTDP up to 400W - At 30°C ambient, cTDP up to 500W	Backplane Board	PCIe Gen5 x4 or SATA 6Gb/s or SAS-4 24Gb/s
OS Compatibility	OS Support List	TPM	1 x TPM header (SPI), Optional TPM2.0 kit: CTM012
Socket	1 x LGA 6096 (Socket SP5)	Power Supply	4 x 2000W 80 PLUS Titanium redundant power supplies AC Input: 100-240V
Chipset	System on Chip	System Management	ASPEED® AST2600 Baseboard Management Controller GIGABYTE Management Console web interface
Memory	12-Channel DDR5 RDIMM, 12 x DIMMs [EPYC 9005] Up to 6000 MT/s [EPYC 9004] Up to 4800 MT/s	System Fans	2 x 60x60x56mm (24,000rpm) 4 x 80x80x80mm (17,500rpm)
LAN	2 x 10Gb/s LAN (1 x Intel® X550-AT2), Support NCSI 1 x 10/100/1000 Mbps Management LAN	Operating Properties	Operating: 10°C~35°C, 8%~80% (non-condensing) Non-operating: -40°C~60°C, 20%~95% (non-condensing)
Video	Integrated in ASPEED® AST2600 - 1 x Mini-DP	Packaging Content	1 x XV23-ZU0-AAJ1 1 x CPU heatsink 1 x Mini-DP to D-Sub cable 1 x GPU power cable (12VHPWR, 450mm) 1 x GPU power cable (12VHPWR, 550mm) 2 x GPU power cables (12VHPWR, 750mm) 1 x DPU power cable (2x PCIe 8pin, 520mm) 1 x 3-Section Rail kit
Storage	Front hot-swap: 2 x 2.5" Gen5 NVMe/SATA/SAS-4 ^[1] Internal M.2: 2 x M.2 (2242/2260/2280/22110), PCIe Gen5 x4 ^[1] Storage card is required to support SATA and SAS drives.	Ordering Part Numbers	6NXV23ZU0DR000ACJ1*
RAID	Require RAID add-in cards	Optional Parts	- Chassis intrusion switch: 25HA1-R28390-U1R - Cable Management Arm: 25HB2-2AA700-K0R



Learn more at: <https://www.gigabyte.com/Enterprise>

* All specifications are subject to change without notice. Please visit our website for the latest information.
* All trademarks and logos are the properties of their respective holders.

© 2025 Giga Computing Technology Co., Ltd. All rights reserved.

Designed by

