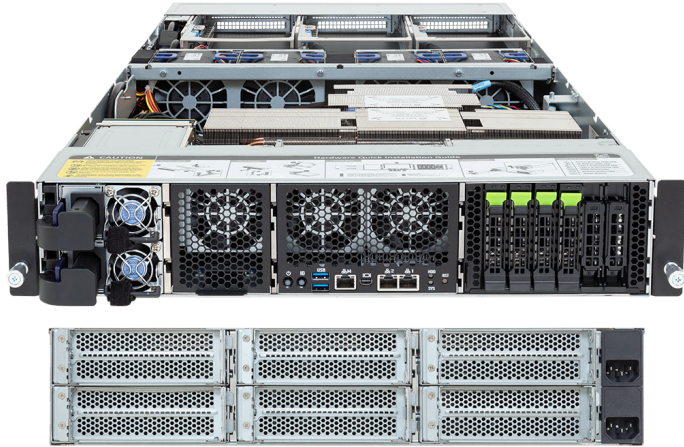


XH23-VG0-AAJ1



NVIDIA MGX™ Arm Server - 2U UP 4-Bay Gen5 NVMe



Key Features

- NVIDIA-Certified Systems™ - NVIDIA ARM CPU Systems
- NVIDIA MGX™ modular server design
- CPU+GPU design for giant-scale AI and HPC
- Single NVIDIA GH200 Grace Hopper Superchip
- 900GB/s NVIDIA® NVLink®-C2C Interconnect
- 480GB CPU LPDDR5X ECC memory
- Up to 144GB GPU HBM3e
- Compatible with NVIDIA BlueField®-3 DPUs
- 2 x 10Gb/s LAN ports via Intel® X550-AT2
- 4 x 2.5" Gen5 NVMe bays
- 2 x M.2 slots with PCIe Gen5 x4 interface
- 3 x FHFL PCIe Gen5 x16 slots
- Dual 2000W 80 PLUS Titanium redundant power supply

Specification

Dimensions	2U (W438 x H87 x D900 mm)	Backplane Board	PCIe Gen5 x4
Motherboard	MVG3-MG0	TPM	1 x TPM header (SPI), Optional TPM2.0 kit: CTM012
CPU	NVIDIA GH200 Grace Hopper Superchip: - 1 x NVIDIA Grace™ CPU - 1 x NVIDIA Hopper™ GPU - Connected with NVIDIA® NVLink®-C2C - TDP up to 1000W (CPU + GPU + memory)	Power Supply	Dual 2000W 80 PLUS Titanium redundant power supply AC Input: 100-240V
OS Compatibility	OS Support List	System Management	ASPEED® AST2600 Baseboard Management Controller GIGABYTE Management Console web interface
Memory	NVIDIA Grace CPU: - 480GB of LPDDR5X memory with ECC - Memory bandwidth up to 512GB/s NVIDIA Hopper GPU: - 96GB HBM3 (or 144GB HBM3e) - Memory bandwidth up to 4TB/s (or 4.9TB/s)	System Fans	3 x 60x60x56mm (24,000rpm) 4 x 80x80x80mm (15,000rpm)
Lan	2 x 10Gb/s LAN (1 x Intel® X550-AT2), Support NCSI 1 x 10/100/1000 Mbps Management LAN	Operating Properties	Operating: 10°C~35°C, 8%~80% (non-condensing) Non-operating: -40°C~60°C, 20%~95% (non-condensing)
Video	Integrated in ASPEED® AST2600 - 1 x Mini-DP	Packaging Content	1 x XH23-VG0-AAJ1 2 x Superchip heatsinks 1 x Mini-DP to D-Sub cable 1 x 3-Section Rail kit
Storage	Front: 4 x 2.5" Gen5 NVMe Internal M.2: 2 x M.2 (2242/2260/2280/22110), PCIe Gen5 x4	Ordering Part Numbers	6NXH23VG0MR000AAJ1*
PCIe Expansion Slots	3 x FHFL PCIe Gen5 x16	Optional Parts	- Cable Management Arm: 25HB2-2AA700-K0R
I/O Ports	Front: 2 x USB 3.2 Gen1, 1 x Mini-DP, 2 x RJ45, 1 x MLAN		



Learn more at: <https://www.gigabyte.com/Enterprise>

* All specifications are subject to change without notice. Please visit our website for the latest information.
* All trademarks and logos are the properties of their respective holders.

© 2025 Giga Computing Technology Co., Ltd. All rights reserved.

Designed by

