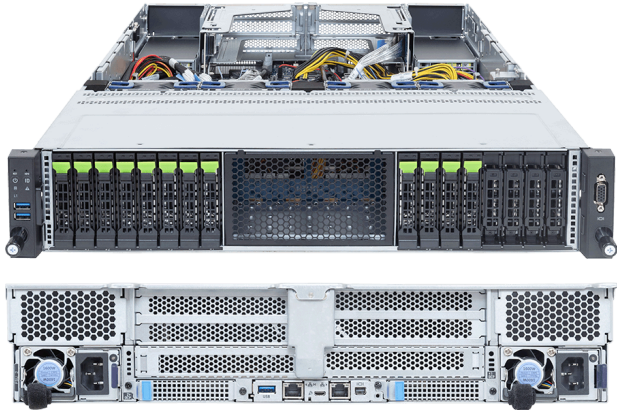


R2A3-T40-AAV1

Rack Arm Server - AmpereOne® M - 2U UP 12-Bay Gen5 NVMe/SATA/SAS-4



Key Features

- Single AmpereOne® M Processors
- 12-Channel DDR5 RDIMM, 12 x DIMMs
- 1 x 1Gb/s LAN port via Intel® I210-AT
- 12 x 2.5" Gen5 NVMe/SATA/SAS-4 hot-swap bays
- 1 x M.2 slot with PCIe Gen5 x4 interface
- 1 x FHHL PCIe Gen5 x16 slot
- 1 x OCP NIC 3.0 PCIe Gen5 x16 slot
- 2 x 1600W 80 PLUS Titanium redundant power supplies

Applications

Networks Server, Servers for Hybrid/Private Cloud...

Specification

Dimensions	2U (W438 x H87.5 x D815 mm)	PCIe Expansion Slots	1 x FHHL PCIe Gen5 x16 1 x OCP NIC 3.0 PCIe Gen5 x16, Support NCSI
Motherboard	MT43-FU1	I/O Ports	Front: 2 x USB 3.2 Gen1, 1 x VGA Rear: 1 x USB 3.2 Gen1, 1 x Mini-DP, 1 x RJ45, 1 x MLAN
CPU	AmpereOne® M Processors Single processor, TDP up to 425W	Backplane Board	PCIe Gen5 x4 or SATA 6Gb/s or SAS-4 24Gb/s
Socket	1 x LGA 7228	TPM	1 x TPM header (SPI), Optional TPM2.0 kit: CTM010
Chipset	System on Chip	Power Supply	2 x 1600W 80 PLUS Titanium redundant power supplies AC Input: 100-240V
Memory	12-Channel DDR5 RDIMM, 12 x DIMMs Up to 5600 MT/s	System Management	ASPEED® AST2600 Baseboard Management Controller GIGABYTE Management Console web interface
LAN	1 x 1Gb/s LAN (1 x Intel® I210-AT), Support NCSI 1 x 10/100/1000 Mbps Management LAN	System Fans	4 x 80x80x38mm
Video	Integrated in ASPEED® AST2600 - 1 x Mini-DP - 1 x VGA port	Operating Properties	Operating: 10°C to 35°C, 8% to 80% (non-condensing) Non-operating: -40°C to 60°C, 20% to 95% (non-condensing)
Storage	Front hot-swap: 12 x 2.5" Gen5 NVMe/SATA/SAS-4 ^[1] Internal M.2: 1 x M.2 (2242/2260/2280/22110), PCIe Gen5 x4 ^[1] Storage card is required to support SATA and SAS drives.	Packaging Content	1 x R2A3-T40-AAV1 1 x CPU heatsink 1 x Carrier 1 x Rail kit
RAID	Require RAID add-in cards	Ordering Part Numbers	6NR2A3T40DR000AAV1*

