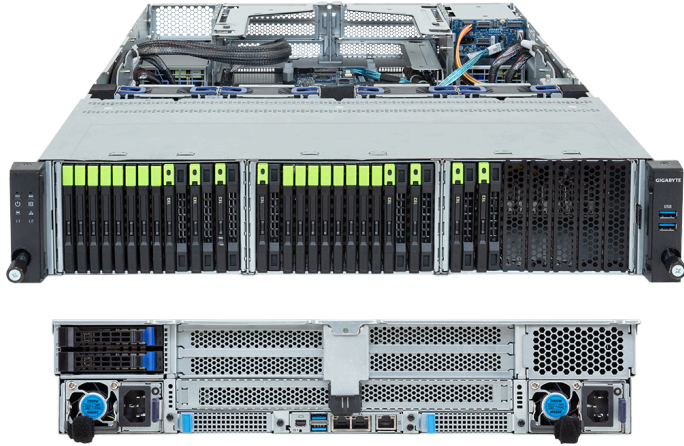


R284-S91-AAJ2

Rack Server - 2U DP 16-Bay E3.S Gen5 NVMe + 8 x E3.S 2T CXL



Key Features

- Dual Intel® Xeon® 6700/6500-Series Processors
- 8-Channel DDR5 RDIMM / MRDIMM, 32 x DIMMs
- Dual ROM Architecture
- 2 x 1Gb/s LAN ports via Intel® I350-AM2
- 16 x E3.S Gen5 NVMe hot-swap bays
- 8 x E3.S 2T bays for CXL memory expansion modules
- 2 x 2.5" SATA/SAS-4 hot-swap bays on the rear side
- 2 x M.2 slots with PCIe Gen5 x4 interface
- 1 x FHHL PCIe Gen5 x16 slot
- 1 x OCP NIC 3.0 PCIe Gen5 x16 slot
- 1+1 2000W 80 PLUS Titanium redundant power supplies

Applications

Storage Server, Networks Server, Servers for Hybrid/Private Cloud...

Specification

Dimensions	2U (438 x 87.5 x 815 mm)	PCIe Expansion Slots	1 x FHHL PCIe Gen5 x16 1 x OCP NIC 3.0 PCIe Gen5 x16 1 x OCP NIC 3.0 PCIe Gen5 x16, occupied for NVMe
Motherboard	MS94-FS0	I/O Ports	Front: 2 x USB 3.2 Gen1 Rear: 2 x USB 3.2 Gen1, 1 x Mini-DP, 2 x RJ45, 1 x MLAN
CPU	Intel® Xeon® 6 Processors - Intel® Xeon® 6700-Series Processors - Intel® Xeon® 6500-Series Processors Dual processor, TDP up to 350W	Backplane Board	Front - CBP20E0: PCIe Gen5 x4 Front - CBP20P0: PCIe Gen5 x4 Rear - CBP2025: SATA 6Gb/s or SAS-4 24Gb/s
OS Compatibility	OS Support List	TPM	1 x TPM header (SPI), Optional TPM2.0 kit: CTM012 1 x PRoT connector (only enabled on RoT SKU)
Socket	2 x LGA 4710 (Socket E2)	Power Supply	1+1 2000W 80 PLUS Titanium redundant power supplies AC Input: 100-240V
Chipset	System on Chip	System Management	ASPEED® AST2600 Baseboard Management Controller GIGABYTE Management Console web interface
Memory	8-Channel DDR5 RDIMM / MRDIMM, 32 x DIMMs [RDIMM] Up to 6400 MT/s (1DPC), 5200 MT/s (2DPC) [MRDIMM] Up to 8000 MT/s [1] [1] MRDIMMs are only supported with Intel® Xeon® 6 Processors with P-cores and in a 1DPC configuration. 8 x E3.S 2T (Gen5 x8) CXL memory expansion modules	System Fans	4 x 80x80x38mm (16,000rpm)
LAN	2 x 1Gb/s LAN (1 x Intel® I350-AM2), Support NCSI 1 x 10/100/1000 Mbps Management LAN	Operating Properties	Operating: 10°C to 35°C, 8% to 80% (non-condensing) Non-operating: -40°C to 60°C, 20% to 95% (non-condensing)
Video	Integrated in ASPEED® AST2600 - 1 x Mini-DP	Packaging Content	1 x R284-S91-AAJ2 2 x CPU heatsinks 1 x Mini-DP to D-Sub cable 4 x Carriers 1 x 2-Section Rail kit
Storage	Front hot-swap: 16 x E3.S Gen5 NVMe Rear hot-swap: 2 x 2.5" SATA/SAS-4 [1] Internal M.2: 2 x M.2 (2280/22110), PCIe Gen5 x4 1 x M.2 (2280), PCIe Gen5 x2, occupied for SATA [1] SAS card is required to support SAS drives.	Ordering Part Numbers	6NR284S91DR000AAJ2*
RAID	Require RAID add-in cards Onboard VROC key header	Optional Parts	- 3-Section Rail kit (Supports CMA): 25HB2-A56121-K0R - Cable Management Arm: 25HB1-R18300-K0R



Learn more at: <https://www.gigabyte.com/Enterprise>

* All specifications are subject to change without notice. Please visit our website for the latest information.
* All trademarks and logos are the properties of their respective holders.

© 2025 Giga Computing Technology Co., Ltd. All rights reserved.

Designed by

