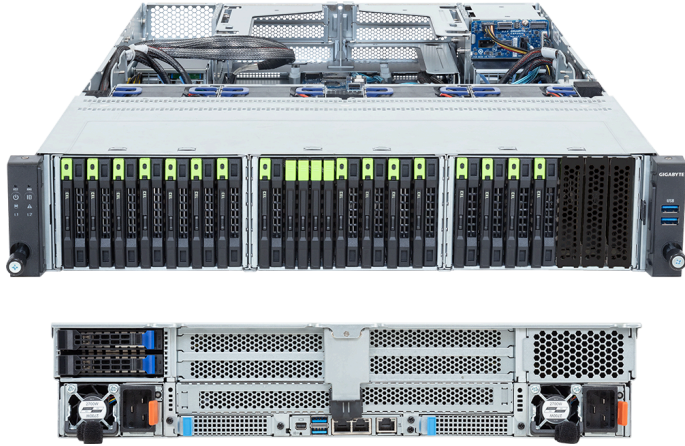


# R284-A91-AAL3

Rack Server - 2U DP 4-Bay E3.S Gen5 NVMe + 16-Bay E3.S 2T CXL



## Key Features

- Dual Intel® Xeon® 6900-Series Processors
- 12-Channel DDR5 RDIMM / MRDIMM, 24 x DIMMs
- Dual ROM Architecture
- 2 x 1Gb/s LAN ports via Intel® I350-AM2
- 4 x E3.S Gen5 NVMe hot-swap bays
- 16 x E3.S 2T bays for CXL memory expansion modules
- 2 x 2.5" SATA/SAS-4 hot-swap bays on the rear side
- 2 x M.2 slots with PCIe Gen5 x4 interface
- 1 x FHHL PCIe Gen5 x16 slot
- 1 x OCP NIC 3.0 PCIe Gen5 x16 slot
- 1+1 2700W 80 PLUS Titanium redundant power supplies

## Applications

Storage Server, Networks Server, Servers for Hybrid/Private Cloud...

## Specification

Dimensions	2U (W438 x H87.5 x D815 mm)	PCIe Expansion Slots	1 x FHHL PCIe Gen5 x16 1 x OCP NIC 3.0 PCIe Gen5 x16 1 x OCP NIC 3.0 PCIe Gen5 x16, <b>occupied for NVMe</b>
Motherboard	MA94-FS0	I/O Ports	<b>Front:</b> 2 x USB 3.2 Gen1 <b>Rear:</b> 2 x USB 3.2 Gen1, 1 x Mini-DP, 2 x RJ45, 1 x MLAN
CPU	Intel® Xeon® 6 Processors - Intel® Xeon® 6900-Series Processors Dual processor, TDP up to 500W	Backplane Board	<b>Front side - CBP20E0:</b> PCIe Gen5 <b>Front side - CBP20P0:</b> PCIe Gen5 <b>Rear side - CBP2025:</b> SATA 6Gb/s or SAS-4 24Gb/s
OS Compatibility	<a href="#">OS Support List</a>	TPM	1 x TPM header (SPI), Optional TPM2.0 kit: CTM012 1 x PRoT connector (only enabled on RoT SKU)
Socket	2 x LGA 7529 (Socket BR)	Power Supply	1+1 2700W 80 PLUS Titanium redundant power supplies AC Input: 100-240V *The system power supply requires C19 power cord.
Chipset	System on Chip	System Management	ASPEED® AST2600 Baseboard Management Controller GIGABYTE Management Console web interface
Memory	12-Channel DDR5 RDIMM / MRDIMM, 24 x DIMMs [RDIMM] Up to 6400 MT/s [MRDIMM] Up to 8800 MT/s [1]  16 x E3.S 2T (Gen5 x8) CXL memory expansion modules [1] MRDIMMs are only supported with Intel® Xeon® 6 Processors with P-cores.	System Fans	4 x 80x80x56mm (15,500rpm)
LAN	2 x 1Gb/s LAN (1 x Intel® I350-AM2), Support NCSI 1 x 10/100/1000 Mbps Management LAN	Operating Properties	Operating: 10°C to 35°C, 8% to 80% (non-condensing) Non-operating: -40°C to 60°C, 20% to 95% (non-condensing)
Video	Integrated in ASPEED® AST2600 - 1 x Mini-DP	Packaging Content	1 x R284-A91-AAL3 2 x CPU heatsinks 1 x Mini-DP to D-Sub cable 2 x Carriers 1 x 2-Section Rail kit
Storage	<b>Front hot-swap:</b> 4 x E3.S Gen5 NVMe <b>Rear hot-swap:</b> 2 x 2.5" SATA/SAS-4 [1] <b>Internal M.2:</b> 2 x M.2 (2280/22110), PCIe Gen5 x4 1 x M.2 (2280), PCIe Gen5 x2, <b>occupied for SATA</b> [1] SAS card is required to support SAS drives.	Ordering Part Numbers	6NR284A91DR000AAL3*
RAID	Require RAID add-in cards Onboard VROC key header	Optional Parts	- 3-Section Rail kit (Supports CMA): 25HB2-A56121-K0R - Cable Management Arm: 25HB1-R18300-K0R



Learn more at: <https://www.gigabyte.com/Enterprise>

\* All specifications are subject to change without notice. Please visit our website for the latest information.  
\* All trademarks and logos are the properties of their respective holders.

© 2025 Giga Computing Technology Co., Ltd. All rights reserved.

Designed by

