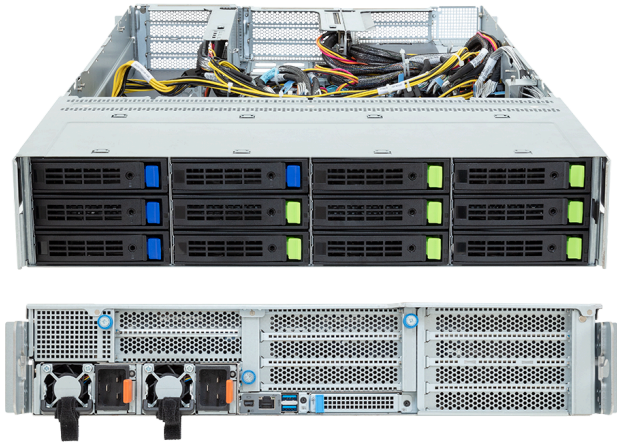


# R283-ZF0-IAL1

Rack Server - 2U DP 4 x PCIe Gen5 GPUs Immersion



### Key Features

- Immersion Cooling Server
- Supports up to 4 x Dual slot Gen5 GPUs
- Dual AMD EPYC™ 9004 Series Processors
- 12-Channel DDR5 RDIMM, 24 x DIMMs
- Dual ROM Architecture
- 8 x 3.5"/2.5" Gen5 NVMe/SATA/SAS-4 bays
- 4 x 3.5"/2.5" SATA/SAS-4 bays
- 4 x FHFL PCIe Gen5 x16 slots for GPUs
- 1 x FHFL PCIe Gen5 x16 slot
- 1 x OCP NIC 3.0 PCIe Gen5 x16 slot
- Dual 2700W 80 PLUS Titanium redundant power supply

### Applications

AI Platform, AI Training Server, AI Inference Server, Visual Computing, High-Performance Computing Server, Networks Server, Servers for Hybrid/Private Cloud...

### Specification

|                  |  |                       |  |
|------------------|--|-----------------------|--|
| Dimensions       | 2U (W438 x H87.5 x D815 mm)  | RAID                  | Require RAID add-in cards  |
| Motherboard      | MZF3-GP0   | PCIe Expansion Slots  | 4 x FHFL PCIe Gen5 x16, for GPUs<br>1 x FHFL PCIe Gen5 x16<br>1 x OCP NIC 3.0 PCIe Gen5 x16, Support NCSI  |
| CPU              | AMD EPYC™ 9005 Series Processors<br>AMD EPYC™ 9004 Series Processors<br>Dual processor, cTDP up to 400W  | I/O Ports             | <b>Top:</b><br>2 x USB 3.2 Gen1, 1 x Mini-DP, 1 x MLAN   |
| OS Compatibility | <a href="#">OS Support List</a>  | Backplane Board       | PCIe Gen5 x4 or SATA 6Gb/s or SAS-4 24Gb/s   |
| Socket           | 2 x LGA 6096 (Socket SP5)  | TPM                   | 1 x TPM header (SPI), Optional TPM2.0 kit: CTM010  |
| Chipset          | System on Chip   | Power Supply          | Dual 2700W 80 PLUS Titanium redundant power supply<br>AC Input: 100-240V<br>*The system power supply requires C19 power cord.  |
| Memory           | 12-Channel DDR5 RDIMM, 24 x DIMMs<br>Up to 4800 MT/s   | System Management     | ASPEED® AST2600 Baseboard Management Controller<br>GIGABYTE Management Console web interface   |
| LAN              | 1 x 10/100/1000 Mbps Management LAN  | Operating Properties  | Operating coolant temperature: 25°C to 35°C<br>Non-operating: -40°C to 60°C, 20% to 95% (non-condensing)   |
| Video            | Integrated in ASPEED® AST2600<br>- 1 x Mini-DP   | Packaging Content     | 1 x R283-ZF0-IAL1<br>2 x CPU heatsinks<br>1 x Mini-DP to D-Sub cable<br>1 x GPU power cable (12VHPWR, 150mm)<br>1 x GPU power cable (12VHPWR, 250mm)<br>1 x GPU power cable (12VHPWR, 450mm)<br>1 x GPU power cable (12VHPWR, 550mm) |
| Storage          | <b>Bottom:</b><br>8 x 3.5"/2.5" Gen5 NVMe/SATA/SAS-4 <sup>[1]</sup><br>4 x 3.5"/2.5" SATA/SAS-4 <sup>[1]</sup><br><sup>[1]</sup> SAS card is required to support SAS drives. | Ordering Part Numbers | 6NR283ZF0DR000IBL1*  |



Learn more at: <https://www.gigabyte.com/Enterprise>

\* All specifications are subject to change without notice. Please visit our website for the latest information.  
\* All trademarks and logos are the properties of their respective holders.

© 2025 Giga Computing Technology Co., Ltd. All rights reserved.

Designed by

