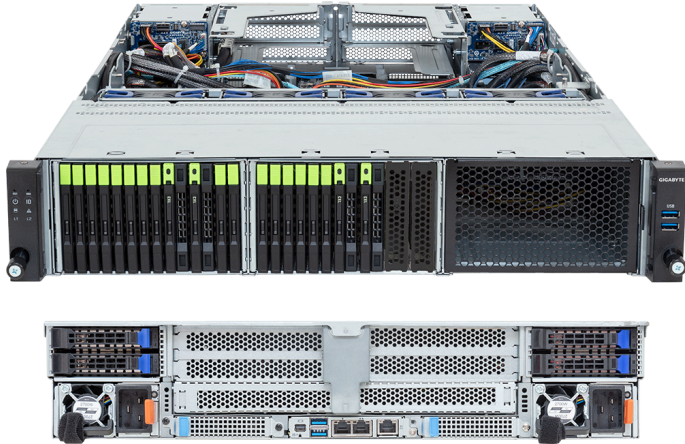


# R283-Z98-AAL1

Rack Server - 2U DP 16-Bay E3.S Gen5 NVMe + 4 x E3.S 2T CXL



## Key Features

- Dual AMD EPYC™ 9005/9004 Series Processors
- 12-Channel DDR5 RDIMM, 24 x DIMMs
- Dual ROM Architecture
- 2 x 1Gb/s LAN ports via Intel® I350-AM2
- 16 x E3.S Gen5 NVMe hot-swap bays
- 4 x E3.S 2T bays for CXL memory expansion modules
- 4 x 2.5" SATA/SAS-4 hot-swap bays on the rear side
- 2 x M.2 slots with PCIe Gen3 x4 and x2 interface
- 1 x FHHL PCIe Gen5 x16 slot
- 1 x OCP NIC 3.0 PCIe Gen5 x16 slot
- 2 x 2700W 80 PLUS Titanium redundant power supplies

## Specification

Dimensions	2U (W438 x H87.5 x D815 mm)	PCIe Expansion Slots	1 x FHHL PCIe Gen5 x16 1 x OCP NIC 3.0 PCIe Gen5 x16 1 x OCP NIC 3.0 PCIe Gen5 x16, <b>occupied for NVMe</b>
Motherboard	MZ93-FS1	I/O Ports	<b>Front:</b> 2 x USB 3.2 Gen1 <b>Rear:</b> 2 x USB 3.2 Gen1, 1 x Mini-DP, 2 x RJ45, 1 x MLAN
CPU	AMD EPYC™ 9005 Series Processors AMD EPYC™ 9004 Series Processors Dual processor, cTDP up to 400W - cTDP up to 500W with optional heatsink	Backplane Board	<b>Front side - CBP20P0:</b> PCIe Gen5 x4 <b>Rear side - CBP2025:</b> SATA 6Gb/s or SAS-4 24Gb/s
OS Compatibility	<a href="#">OS Support List</a>	TPM	1 x TPM header (SPI), Optional TPM2.0 kit: CTM010
Socket	2 x LGA 6096 (Socket SP5)	Power Supply	2 x 2700W 80 PLUS Titanium redundant power supplies AC Input: 100-240V *The system power supply requires C19 power cord.
Chipset	System on Chip	System Management	ASPEED® AST2600 Baseboard Management Controller GIGABYTE Management Console web interface
Memory	12-Channel DDR5 RDIMM, 24 x DIMMs [EPYC 9005] Up to 6400 MT/s [EPYC 9004] Up to 4800 MT/s 4 x E3.S 2T (Gen5 x8) CXL memory expansion modules	System Fans	4 x 80x80x38mm (18,300rpm)
LAN	2 x 1Gb/s LAN (1 x Intel® I350-AM2), Support NCSI 1 x 10/100/1000 Mbps Management LAN	Operating Properties	Operating: 10°C~35°C, 8%~80% (non-condensing) Non-operating: -40°C~60°C, 20%~95% (non-condensing)
Video	Integrated in ASPEED® AST2600 - 1 x Mini-DP	Packaging Content	1 x R283-Z98-AAL1 2 x CPU heatsinks 1 x Mini-DP to D-Sub cable 1 x 2-Section Rail kit
Storage	<b>Front hot-swap:</b> 16 x E3.S Gen5 NVMe <b>Rear hot-swap:</b> 4 x 2.5" SATA/SAS-4 [1] <b>Internal M.2:</b> 1 x M.2 (2280/22110), PCIe Gen3 x4 1 x M.2 (2280/22110), PCIe Gen3 x4, <b>occupied for SATA</b> 1 x M.2 (2280/22110), PCIe Gen3 x2 [1] SAS card is required to support SAS drives.	Ordering Part Numbers	6NR283Z98DR000ACL1*
RAID	Require RAID add-in cards	Optional Parts	- 3-Section Rail kit (Supports CMA): 25HB2-A56121-KOR - Cable Management Arm: 25HB1-R18300-KOR - CPU heatsink (500W): 25ST1-563400-C1R



Learn more at: <https://www.gigabyte.com/Enterprise>

\* All specifications are subject to change without notice. Please visit our website for the latest information.  
\* All trademarks and logos are the properties of their respective holders.

© 2025 Giga Computing Technology Co., Ltd. All rights reserved.

Designed by

